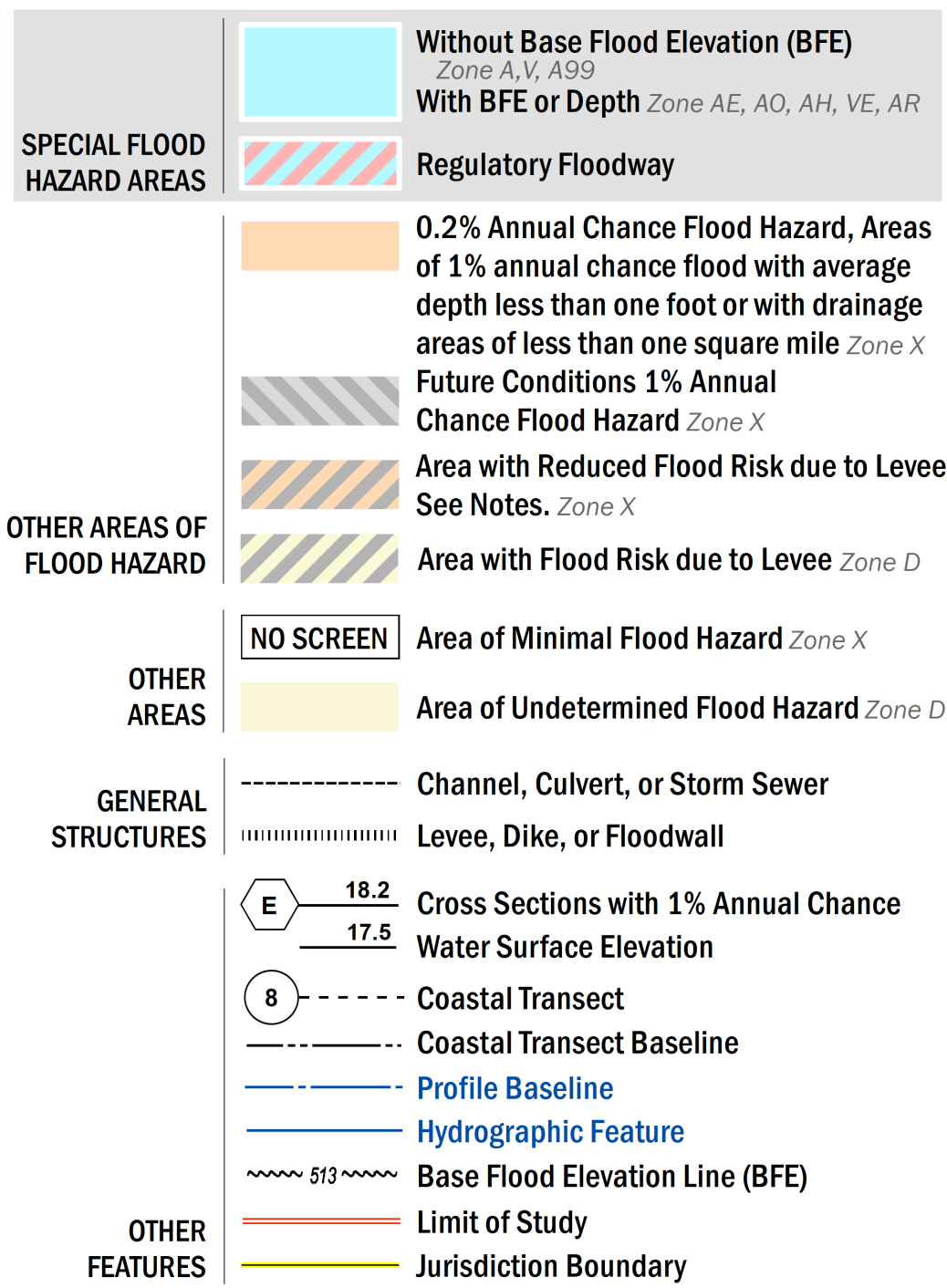


FLOOD HAZARD INFORMATION

SEE FIS REPORT FOR DETAILED LEGEND AND INDEX MAP FOR FIRM PANEL LAYOUT
 THE INFORMATION DEPICTED ON THIS MAP AND SUPPORTING DOCUMENTATION ARE ALSO AVAILABLE IN DIGITAL FORMAT AT [HTTPS://MSC.FEMA.GOV](https://MSC.FEMA.GOV)



NOTES TO USERS

For information and questions about this Flood Insurance Rate Map (FIRM), available products associated with this FIRM, including historic versions, the current map data for each FIRM panel, how to order products, or the National Flood Insurance Program (NFIP) in general, please call the FEMA Map Information eXchange at 1-877-FEMA-MAP (1-877-336-2627) or visit the FEMA Flood Map Service Center website at <https://msc.fema.gov>. Available products may include previously issued Letters of Map Change, a Flood Insurance Study Report, and/or digital versions of this map. Many of these products can be ordered or obtained directly from the website.

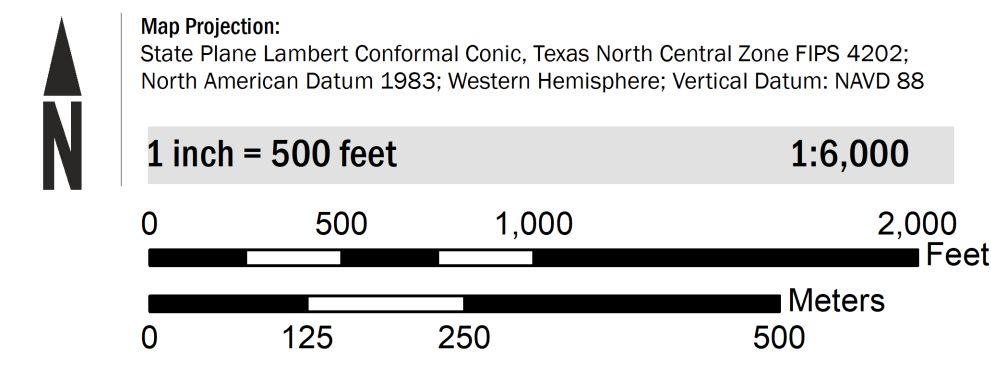
Communities annexing land on adjacent FIRM panels must obtain a current copy of the adjacent panel as well as the current FIRM Index. These may be ordered directly from the Flood Map Service Center at the number listed above.

For community and countywide map dates refer to the Flood Insurance Study Report for this jurisdiction.

To determine if flood insurance is available in this community, contact your insurance agent or call the National Flood Insurance Program at 1-800-638-6620.

Base map information shown on this FIRM was derived from multiple sources. The Texas Natural Resources Information System (TNRIS) provided the Texas Department of Transportation (TxDOT) county boundaries and transportation layers dated 2015. The North Central Texas Council of Governments (NCTCOG) provided transportation layers and community boundaries dated 2019. Base map data for community boundaries was also provided by local communities dated 2019.

SCALE



PANEL LOCATOR

Tarrant County	0204	0208	0209	0228	0229
	0212	0216	0217	0236	0237
0194	0213	0214	0218	0219	0238
0307	0326	0327	0331	0332	0351
0309	0328	0329	0333	0334	0353
0320	0336	0337	0341	0342	0361
	0338	0339	0343	0344	0363

NATIONAL FLOOD INSURANCE PROGRAM
 FLOOD INSURANCE RATE MAP

TARRANT COUNTY, TEXAS
 and Incorporated Areas
 PANEL 331 of 495

Panel Contains:

COMMUNITY	NUMBER	PANEL	SUFFIX
ARLINGTON, CITY OF	485454	0331	L
FORT WORTH, CITY OF	480596	0331	L
PANTEGO, TOWN OF	481116	0331	L

PRELIMINARY
 11/13/2020

VERSION NUMBER
 2.6.4.6
 MAP NUMBER
 48439C0331L
 MAP REVISED