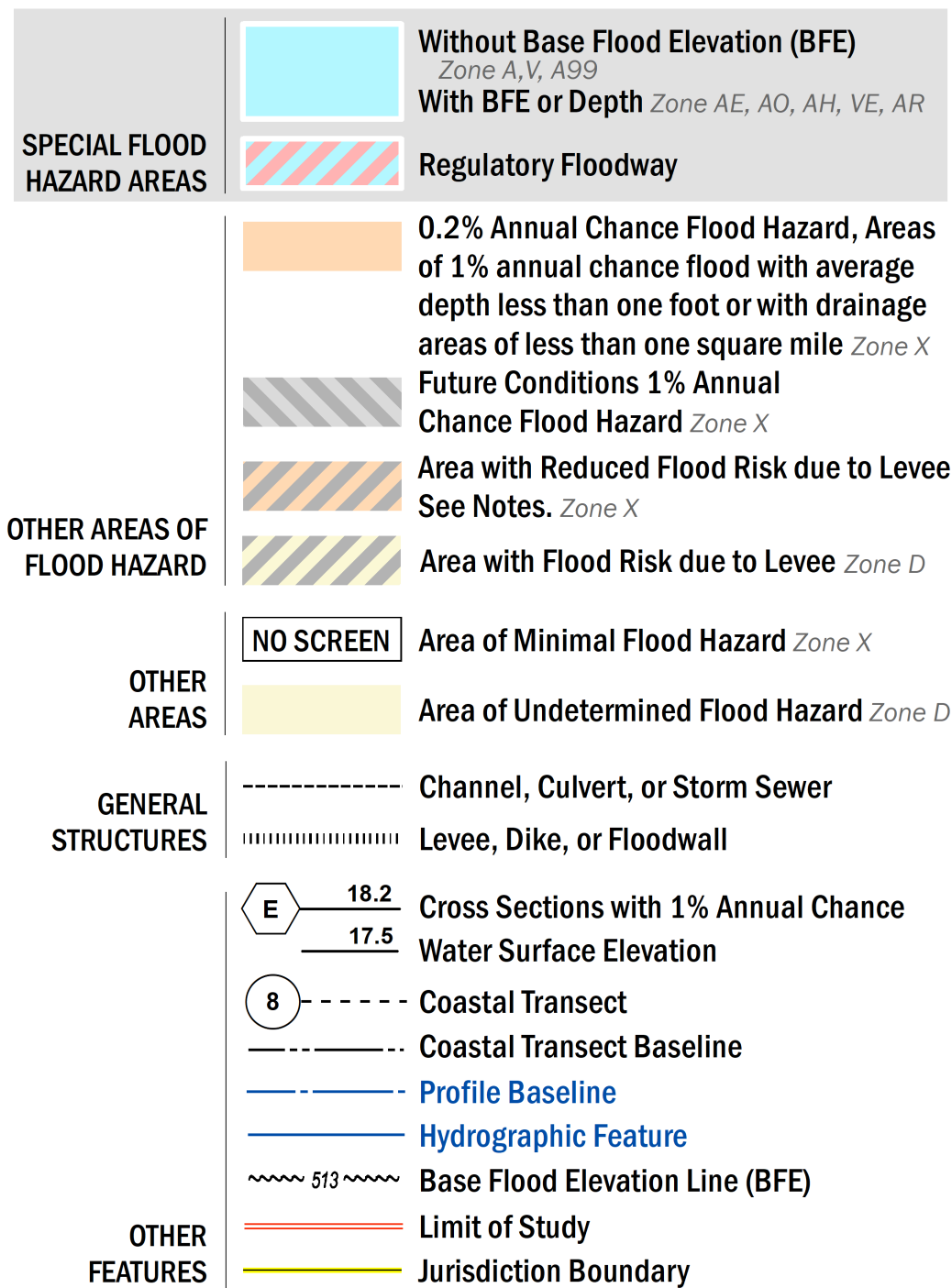


FLOOD HAZARD INFORMATION

SEE FIS REPORT FOR DETAILED LEGEND AND INDEX MAP FOR FIRM PANEL LAYOUT
THE INFORMATION DEPICTED ON THIS MAP AND SUPPORTING DOCUMENTATION ARE ALSO AVAILABLE IN DIGITAL FORMAT AT [HTTPS://MSC.FEMA.GOV](https://MSC.FEMA.GOV)



NOTES TO USERS

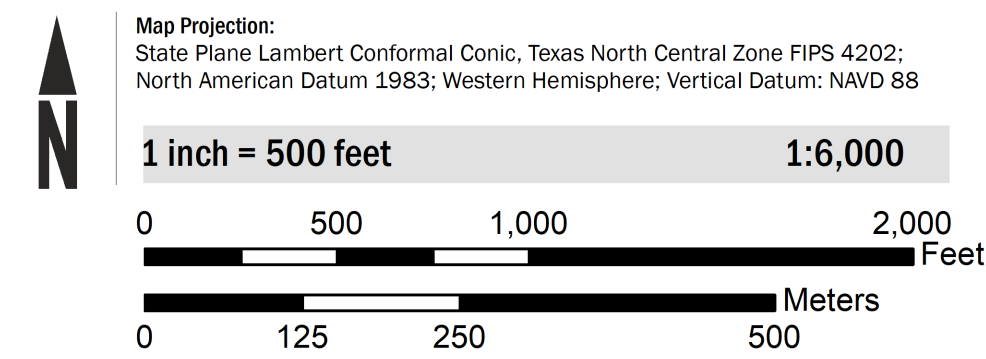
For information and questions about this Flood Insurance Rate Map (FIRM), available products associated with this FIRM, including historic versions, the current map date for each FIRM panel, how to order products, or the National Flood Insurance Program (NFIP) in general, please call the FEMA Map Information eXchange at 1-877-FEMA-MAP (1-877-336-2627) or visit the FEMA Flood Map Service Center website at <https://msc.fema.gov>. Available products may include previously issued Letters of Map Change, a Flood Insurance Study Report, and/or digital versions of the map. Many of these products can be ordered or obtained directly from the website.

Communities annexing land on adjacent FIRM panels must obtain a current copy of the adjacent panel as well as the current FIRM Index. These may be ordered directly from the Flood Map Service Center at the number listed above.

For community and countywide map dates refer to the Flood Insurance Study Report for this jurisdiction. To determine if flood insurance is available in this community, contact your insurance agent or call the National Flood Insurance Program at 1-800-638-6620.

Base map information shown on this FIRM was derived from multiple sources. The Texas Natural Resources Information System (TNRIS) provided the Texas Department of Transportation (TxDOT) county boundaries and transportation layers dated 2015. The North Central Texas Council of Governments (NCTCOG) provided transportation layers and community boundaries dated 2019. Base map data for community boundaries was also provided by local communities dated 2019.

SCALE



PANEL LOCATOR

Tarrant County	0184	0203	0204	0208	0209
	0192	0211	0212	0216	0217
0189	0193	0194	0213	0214	0218
0305	0306	0307	0326	0327	0331
	0308	0309	0328	0329	0333
0315	0320	0336	0337	0341	0342
		0338	0339	0343	0344

NATIONAL FLOOD INSURANCE PROGRAM
FLOOD INSURANCE RATE MAP

TARRANT COUNTY, TEXAS
 and Incorporated Areas
PANEL 326 OF 495

Panel Contains:

COMMUNITY	NUMBER	PANEL	SUFFIX
ARLINGTON, CITY OF	485454	0326	L
FORT WORTH, CITY OF	480596	0326	L

PRELIMINARY
11/13/2020

VERSION NUMBER
2.6.4.6

MAP NUMBER
48439C0326L

MAP REVISED