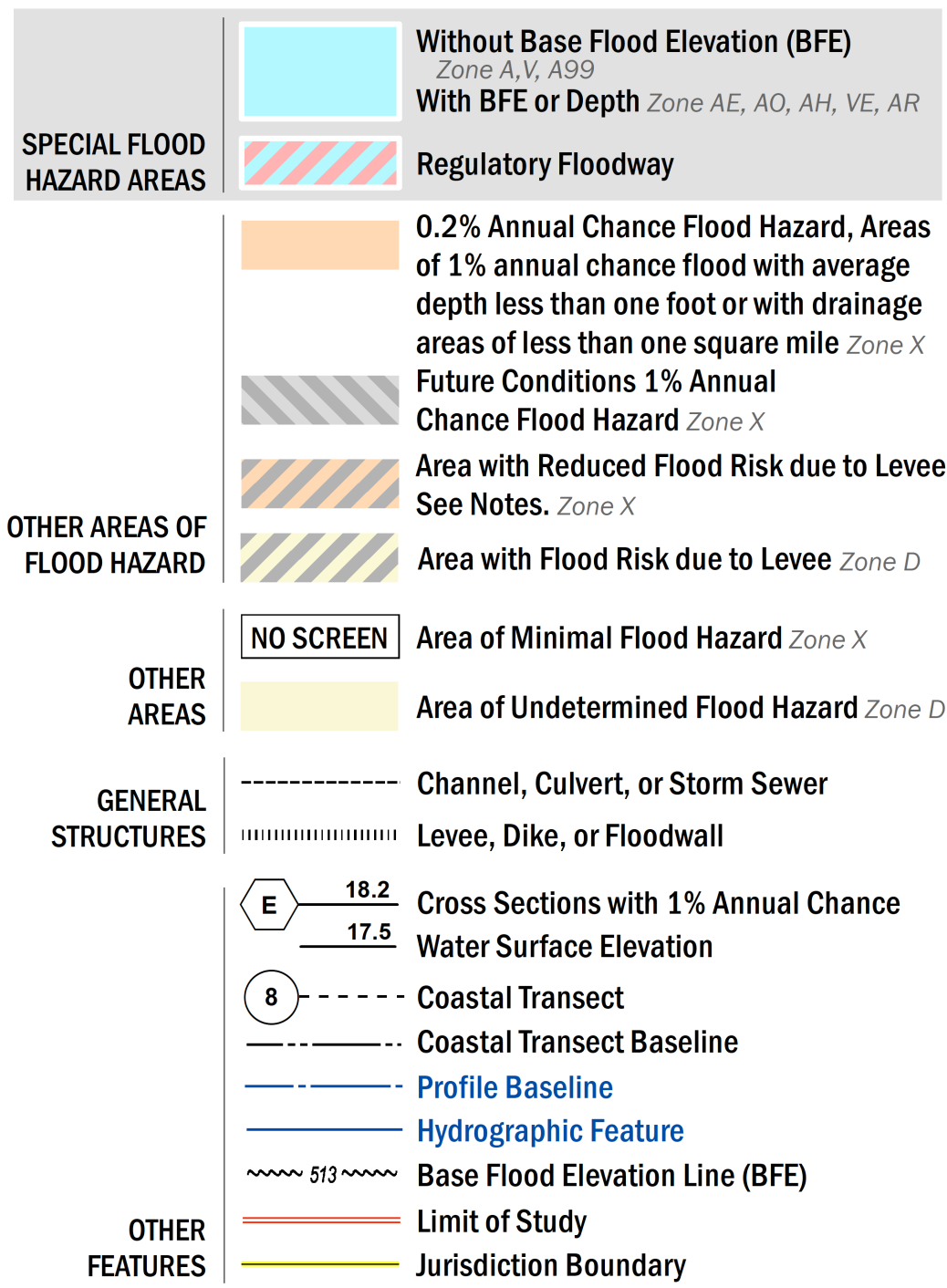


**FLOOD HAZARD INFORMATION**

SEE FIS REPORT FOR DETAILED LEGEND AND INDEX MAP FOR FIRM PANEL LAYOUT  
**THE INFORMATION DEPICTED ON THIS MAP AND SUPPORTING DOCUMENTATION ARE ALSO AVAILABLE IN DIGITAL FORMAT AT [HTTPS://MSC.FEMA.GOV](https://MSC.FEMA.GOV)**



**NOTES TO USERS**

For information and questions about this Flood Insurance Rate Map (FIRM), available products associated with this FIRM, including historic versions, the current map date for each FIRM panel, how to order products, or the National Flood Insurance Program (NFIP) in general, please call the FEMA Flood Map Service Center website at <https://msc.fema.gov>. Available products may include previously issued Letters of Map Change, a Flood Insurance Study Report, and/or digital versions of this map. Many of these products can be ordered or obtained directly from the website.

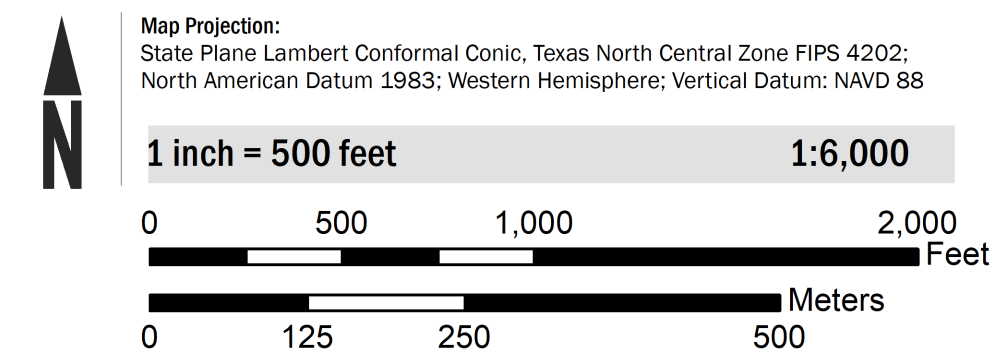
Communities annexing land on adjacent FIRM panels must obtain a current copy of the adjacent panel as well as the current FIRM Index. These may be ordered directly from the Flood Map Service Center at the number listed above.

For community and countywide map dates refer to the Flood Insurance Study Report for this jurisdiction. To determine if flood insurance is available in this community, contact your insurance agent or call the National Flood Insurance Program at 1-800-638-6620.

Base map information shown on this FIRM was derived from multiple sources. The Texas Natural Resources Information System (TNRIS) provided the Texas Department of Transportation (TxDOT) county boundaries and transportation layers dated 2015. The North Central Texas Council of Governments (NCTCOG) provided transportation layers and community boundaries dated 2019. Base map data for community boundaries was also provided by local communities dated 2019.

**Non-Accredited Levee Note:** This levee does not meet the minimum requirements of Section 65.10 of the NFIP Regulations, and therefore flood hazard boundaries were determined by the methods which were coordinated and reviewed with impact communities and other stakeholders.

**SCALE**



**PANEL LOCATOR**

Tarrant County		0094	0113	0114	0120
		0207	0226	0227	
0204	0208	0209	0228	0229	0235
0212	0216	0217	<b>0236</b>	0237	
0214	0218	0219	0238	0239	0245
0327	0331	0332	0351	0352	
0329	0333	0334	0353	0354	0360

**NATIONAL FLOOD INSURANCE PROGRAM**  
**FLOOD INSURANCE RATE MAP**

TARRANT COUNTY, TEXAS  
 and Incorporated Areas

PANEL 236 OF 495

Panel Contains:

COMMUNITY	NUMBER	PANEL	SUFFIX
ARLINGTON, CITY OF	485454	0236	M
EULEUS, CITY OF	480593	0236	M
FORT WORTH, CITY OF	480596	0236	M

**PRELIMINARY**  
**11/13/2020**

VERSION NUMBER  
**2.6.4.6**

MAP NUMBER  
**48439C0236M**

MAP REVISED