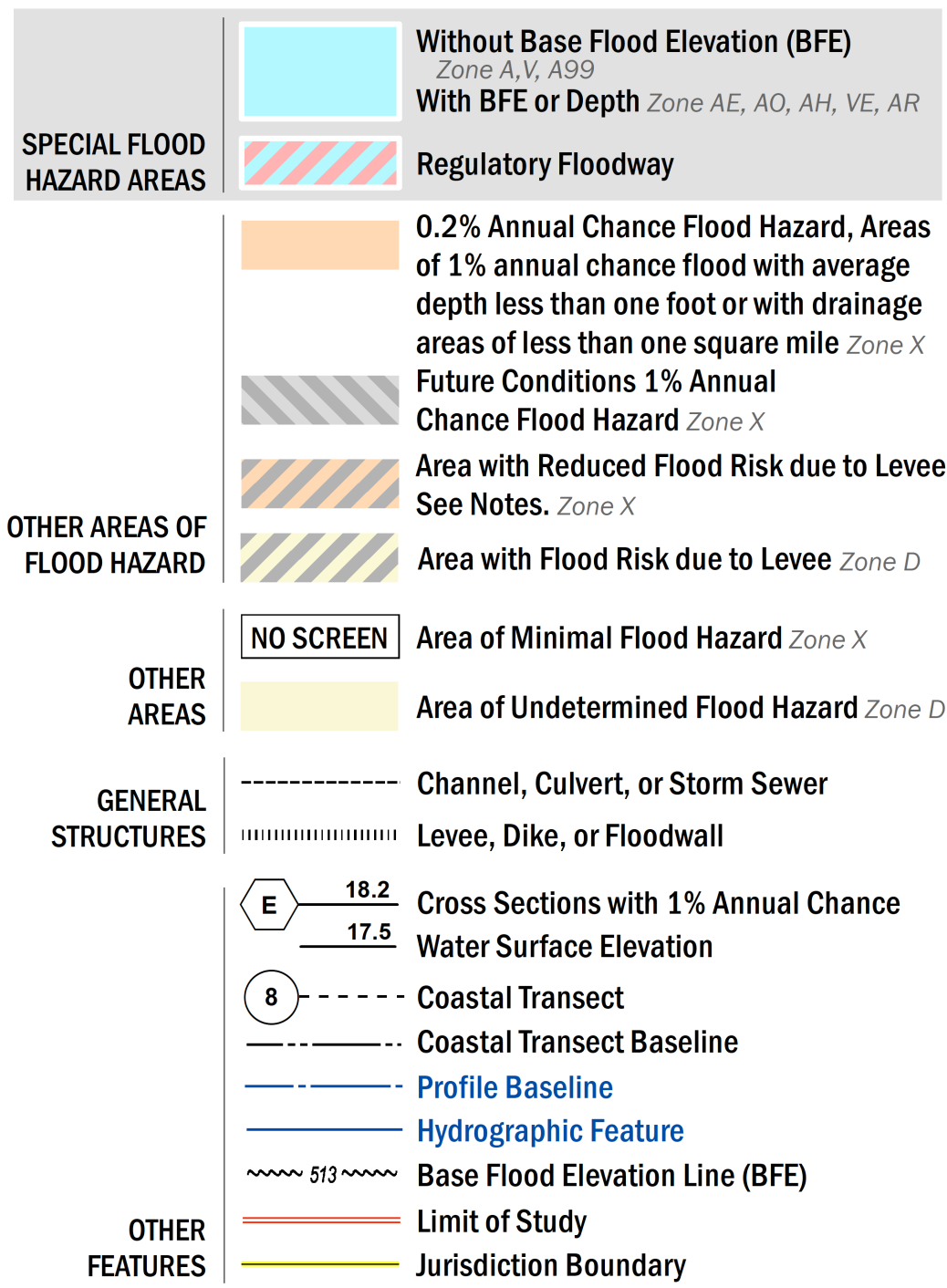


**FLOOD HAZARD INFORMATION**

SEE FIS REPORT FOR DETAILED LEGEND AND INDEX MAP FOR FIRM PANEL LAYOUT  
**THE INFORMATION DEPICTED ON THIS MAP AND SUPPORTING DOCUMENTATION ARE ALSO AVAILABLE IN DIGITAL FORMAT AT [HTTPS://MSC.FEMA.GOV](https://MSC.FEMA.GOV)**



**NOTES TO USERS**

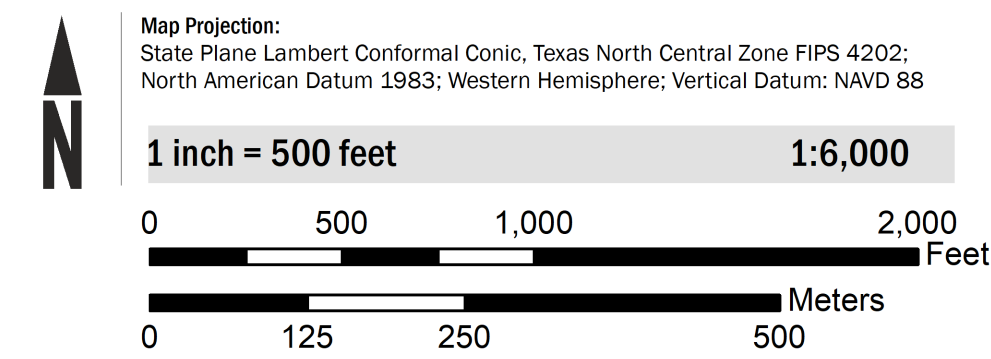
For information and questions about this Flood Insurance Rate Map (FIRM), available products associated with this FIRM, including historic versions, the current map date for each FIRM panel, how to order products, or the National Flood Insurance Program (NFIP) in general, please call the FEMA Flood Map Service Center website at <https://msc.fema.gov>. Available products may include previously issued Letters of Map Change, a Flood Insurance Study Report, and/or digital versions of this map. Many of these products can be ordered or obtained directly from the website.

Communities annexing land on adjacent FIRM panels must obtain a current copy of the adjacent panel as well as the current FIRM Index. These may be ordered directly from the Flood Map Service Center at the number listed above.

For community and countywide map dates refer to the Flood Insurance Study Report for this jurisdiction. To determine if flood insurance is available in this community, contact your insurance agent or call the National Flood Insurance Program at 1-800-638-6620.

Base map information shown on this FIRM was derived from multiple sources. The Texas Natural Resources Information System (TNRIS) provided the Texas Department of Transportation (TxDOT) county boundaries and transportation layers dated 2015. The North Central Texas Council of Governments (NCTCOG) provided transportation layers and community boundaries dated 2019. Base map data for community boundaries was also provided by local communities dated 2019.

**SCALE**



**PANEL LOCATOR**

Tarrant County		0068	0069	0088	0089	0093
		0181	0182	0201	0202	0206
0178	0179	0183	0184	0203	0204	0208
0186	0187	0191	<b>0192</b>	0211	0212	0216
0188	0189	0193	0194	0213	0214	0218
		0306	0307	0326	0327	0331
		0305		0308	0309	0328
				0328	0329	0333

**NATIONAL FLOOD INSURANCE PROGRAM**  
**FLOOD INSURANCE RATE MAP**

TARRANT COUNTY, TEXAS  
 and Incorporated Areas  
 PANEL 192 of 495

Panel Contains:

COMMUNITY	NUMBER	PANEL	SUFFIX
FORT WORTH, CITY OF	480596	0192	M
HALTOM CITY, CITY OF	480599	0192	M
NORTH RICHLAND HILLS, CITY OF	480607	0192	M

**PRELIMINARY**  
**11/13/2020**

VERSION NUMBER  
**2.6.4.6**

MAP NUMBER  
**48439C0192M**

MAP REVISED