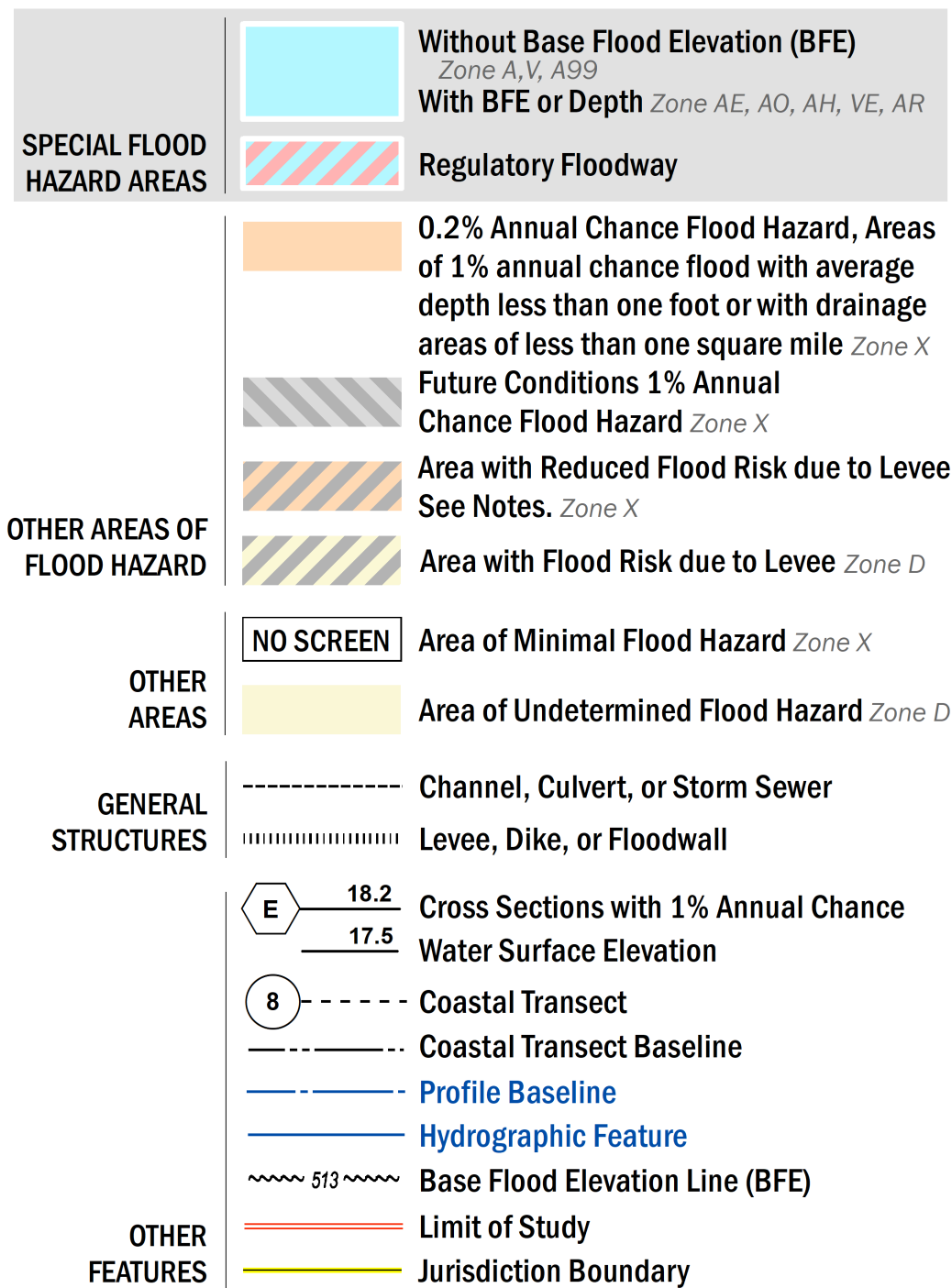




FLOOD HAZARD INFORMATION

SEE FIS REPORT FOR DETAILED LEGEND AND INDEX MAP FOR FIRM PANEL LAYOUT
 THE INFORMATION DEPICTED ON THIS MAP AND SUPPORTING DOCUMENTATION ARE ALSO AVAILABLE IN DIGITAL FORMAT AT [HTTPS://MSC.FEMA.GOV](https://MSC.FEMA.GOV)



NOTES TO USERS

For information and questions about this Flood Insurance Rate Map (FIRM), available products associated with this FIRM, including historic versions, the current map date for each FIRM panel, how to order products, or the National Flood Insurance Program (NFIP) in general, please call the FEMA Map Information eXchange at 1-877-FEMA-MAP (1-877-336-2627) or visit the FEMA Flood Map Service Center website at <https://msc.fema.gov>. Available products may include previously issued Letters of Map Change, a Flood Insurance Study Report, and/or digital versions of the map. Many of these products can be ordered or obtained directly from the website.

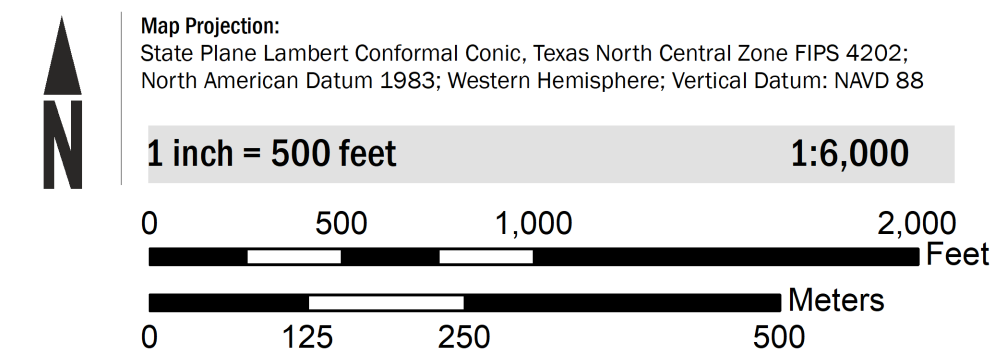
Communities annexing land on adjacent FIRM panels must obtain a current copy of the adjacent panel as well as the current FIRM Index. These may be ordered directly from the Flood Map Service Center at the number listed above.

For community and countywide map dates refer to the Flood Insurance Study Report for this jurisdiction.

To determine if flood insurance is available in this community, contact your insurance agent or call the National Flood Insurance Program at 1-800-638-6620.

Base map information shown on this FIRM was derived from multiple sources. The Texas Natural Resources Information System (TNRIS) provided the Texas Department of Transportation (TxDOT) county boundaries and transportation layers dated 2015. The North Central Texas Council of Governments (NCTCOG) provided transportation layers and community boundaries dated 2019. Base map data for community boundaries was also provided by local communities dated 2019.

SCALE



PANEL LOCATOR

Tarrant County				0045	0063	0064	0068
				0160	0176	0177	0181
0155			0159	0178	0179	0183	
0165	0166	0167	0186	0187	0191		
0163	0164	0168	0169	0188	0189	0193	
0276	0277	0281	0282			0306	
					0305		
0278	0279	0283	0284			0308	

NATIONAL FLOOD INSURANCE PROGRAM
 FLOOD INSURANCE RATE MAP

TARRANT COUNTY, TEXAS
 and Incorporated Areas

PANEL 167 OF 495

Panel Contains:

COMMUNITY	NUMBER	PANEL	SUFFIX
FORT WORTH, CITY OF	480596	0167	M
RIVER OAKS, CITY OF	480609	0167	M
SANSOM PARK, CITY OF	480611	0167	M

PRELIMINARY
 11/13/2020

VERSION NUMBER
 2.6.4.6

MAP NUMBER
 48439C0167M

MAP REVISED