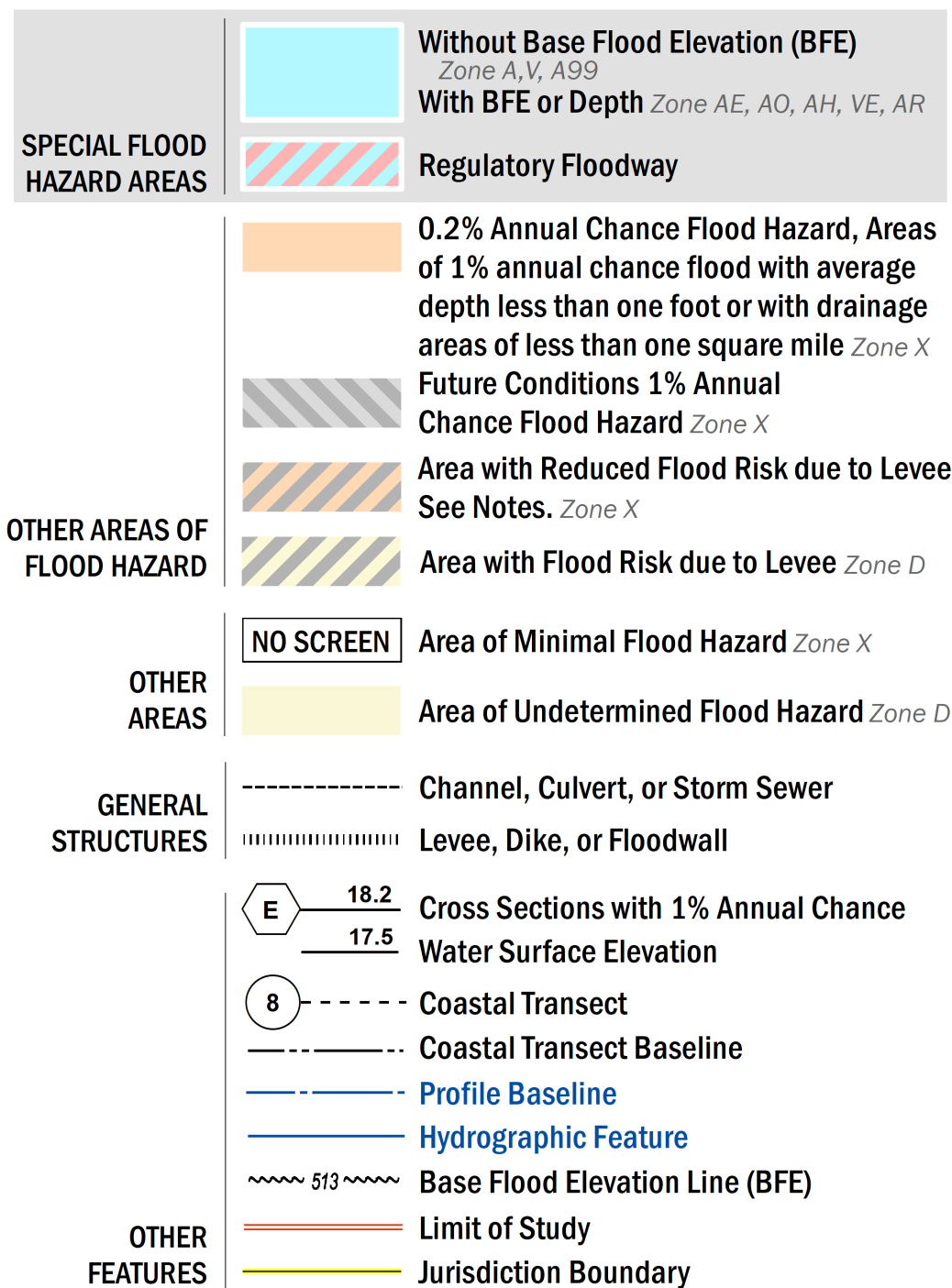


**FLOOD HAZARD INFORMATION**

SEE FIS REPORT FOR DETAILED LEGEND AND INDEX MAP FOR FIRM PANEL LAYOUT  
 THE INFORMATION DEPICTED ON THIS MAP AND SUPPORTING  
 DOCUMENTATION ARE ALSO AVAILABLE IN DIGITAL FORMAT AT  
[HTTPS://MSC.FEMA.GOV](https://MSC.FEMA.GOV)



**NOTES TO USERS**

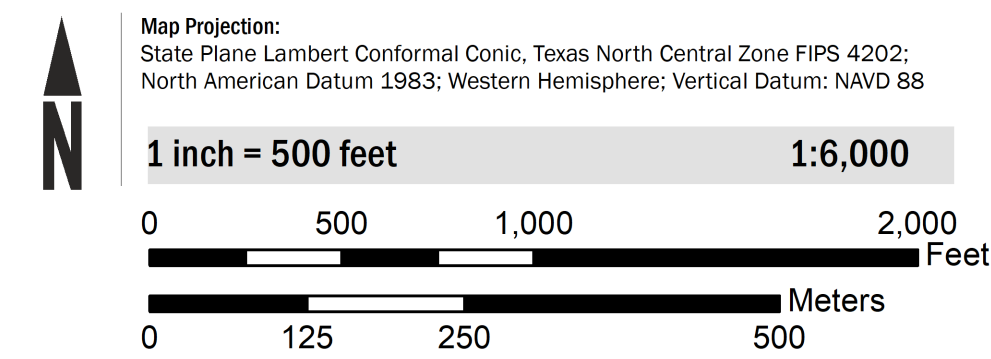
For information and questions about this Flood Insurance Rate Map (FIRM), available products associated with this FIRM, including historic versions, the current map date for each FIRM panel, how to order products, or the National Flood Insurance Program (NFIP) in general, please call the FEMA Map Information eXchange at 1-877-FEMA-MAP (1-877-336-2627) or visit the FEMA Flood Map Service Center website at <https://msc.fema.gov>. Available products may include previously issued Letters of Map Change, a Flood Insurance Study Report, and/or digital versions of this map. Many of these products can be ordered or obtained directly from the website.

Communities annexing land on adjacent FIRM panels must obtain a current copy of the adjacent panel as well as the current FIRM Index. These may be ordered directly from the Flood Map Service Center at the number listed above.

For community and countywide map dates refer to the Flood Insurance Study Report for this jurisdiction. To determine if flood insurance is available in this community, contact your insurance agent or call the National Flood Insurance Program at 1-800-638-6620.

Base map information shown on this FIRM was derived from multiple sources. The Texas Natural Resources Information System (TNRIS) provided the Texas Department of Transportation (TxDOT) county boundaries and transportation layers dated 2015. The North Central Texas Council of Governments (NCTCOG) provided transportation layers and community boundaries dated 2019. Base map data for community boundaries was also provided by local communities dated 2019.

**SCALE**



**PANEL LOCATOR**

Tarrant County		0155		0160		0176	
				0159		0178	
0145		0142		0165		0166	
		0144		0163		0168	
				0164		0169	
		0147		0170		0188	
0256		0257		0276		0277	
		0258		0278		0281	
				0279		0282	
		0259		0283		0284	
0270		0267		0286		0287	
				0291		0292	
						0305	
						0315	

**NATIONAL FLOOD INSURANCE PROGRAM**  
 FLOOD INSURANCE RATE MAP

TARRANT COUNTY, TEXAS  
 and Incorporated Areas  
 PANEL 164 OF 495

Panel Contains:

COMMUNITY	NUMBER	PANEL	SUFFIX
FORT WORTH, CITY OF	480596	0164	L
WESTWORTH VILLAGE, CITY OF	480616	0164	L
WHITE SETTLEMENT, CITY OF	480617	0164	L

**PRELIMINARY**  
 11/13/2020

VERSION NUMBER  
 2.6.4.6  
 MAP NUMBER  
 48439C0164L  
 MAP REVISED