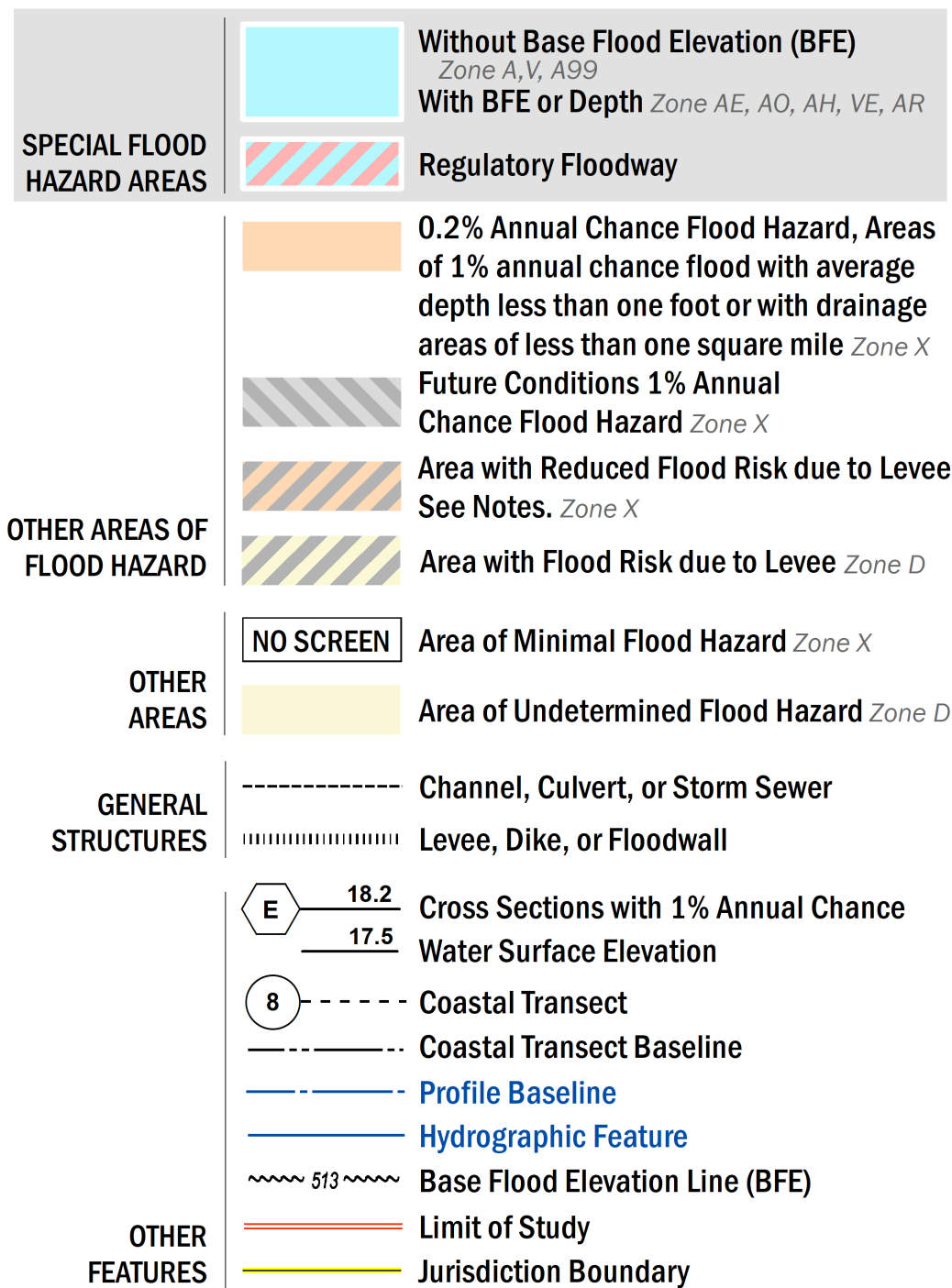


FLOOD HAZARD INFORMATION

SEE FIS REPORT FOR DETAILED LEGEND AND INDEX MAP FOR FIRM PANEL LAYOUT
 THE INFORMATION DEPICTED ON THIS MAP AND SUPPORTING DOCUMENTATION ARE ALSO AVAILABLE IN DIGITAL FORMAT AT [HTTPS://MSC.FEMA.GOV](https://MSC.FEMA.GOV)



NOTES TO USERS

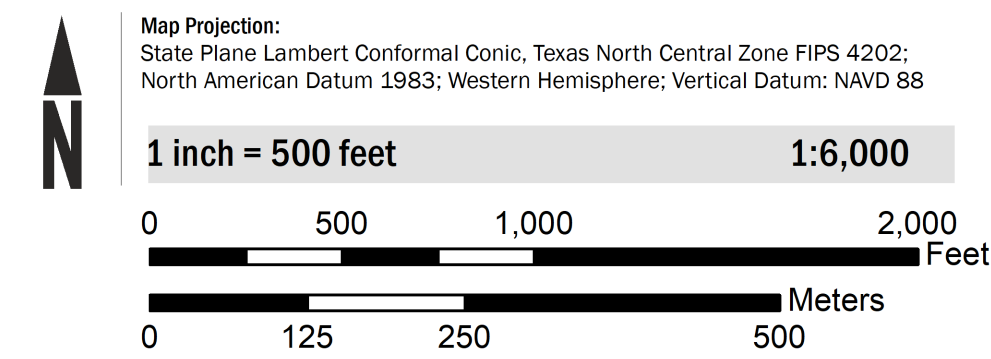
For information and questions about this Flood Insurance Rate Map (FIRM), available products associated with this FIRM, including historic versions, the current map date for each FIRM panel, how to order products, or the National Flood Insurance Program (NFIP) in general, please call the FEMA Map Information eXchange at 1-877-FEMA-MAP (1-877-336-2627) or visit the FEMA Flood Map Service Center website at <https://msc.fema.gov>. Available products may include previously issued Letters of Map Change, a Flood Insurance Study Report, and/or digital versions of this map. Many of these products can be ordered or obtained directly from the website.

Communities annexing land on adjacent FIRM panels must obtain a current copy of the adjacent panel as well as the current FIRM Index. These may be ordered directly from the Flood Map Service Center at the number listed above.

For community and countywide map dates refer to the Flood Insurance Study Report for this jurisdiction. To determine if flood insurance is available in this community, contact your insurance agent or call the National Flood Insurance Program at 1-800-638-6620.

Base map information shown on this FIRM was derived from multiple sources. The Texas Natural Resources Information System (TNRIS) provided the Texas Department of Transportation (TxDOT) county boundaries and transportation layers dated 2015. The North Central Texas Council of Governments (NCTCOG) provided transportation layers and community boundaries dated 2019. Base map data for community boundaries was also provided by local communities dated 2019.

SCALE



PANEL LOCATOR

Dallas County	0317	0336	0337	0345		
	0319	0338	0339	0343	0344	
0452	0456	0457	0476	0477	0481	0482
0454	0458	0459	0478	0479	0483	0484
0465	0466	0467	0486	0487	0491	0492
	0468	0469	0488	0489	0493	0494
0605	0610	0630		0631	0632	

NATIONAL FLOOD INSURANCE PROGRAM
 FLOOD INSURANCE RATE MAP

DALLAS COUNTY, TEXAS
 and Incorporated Areas

PANEL 478 of 725

Panel Contains:
 COMMUNITY NUMBER PANEL SUFFIX
 DALLAS, CITY OF 480171 0478 L

PRELIMINARY
 11/13/2020

VERSION NUMBER 2.6.4.6
 MAP NUMBER 48113C0478L
 MAP REVISED