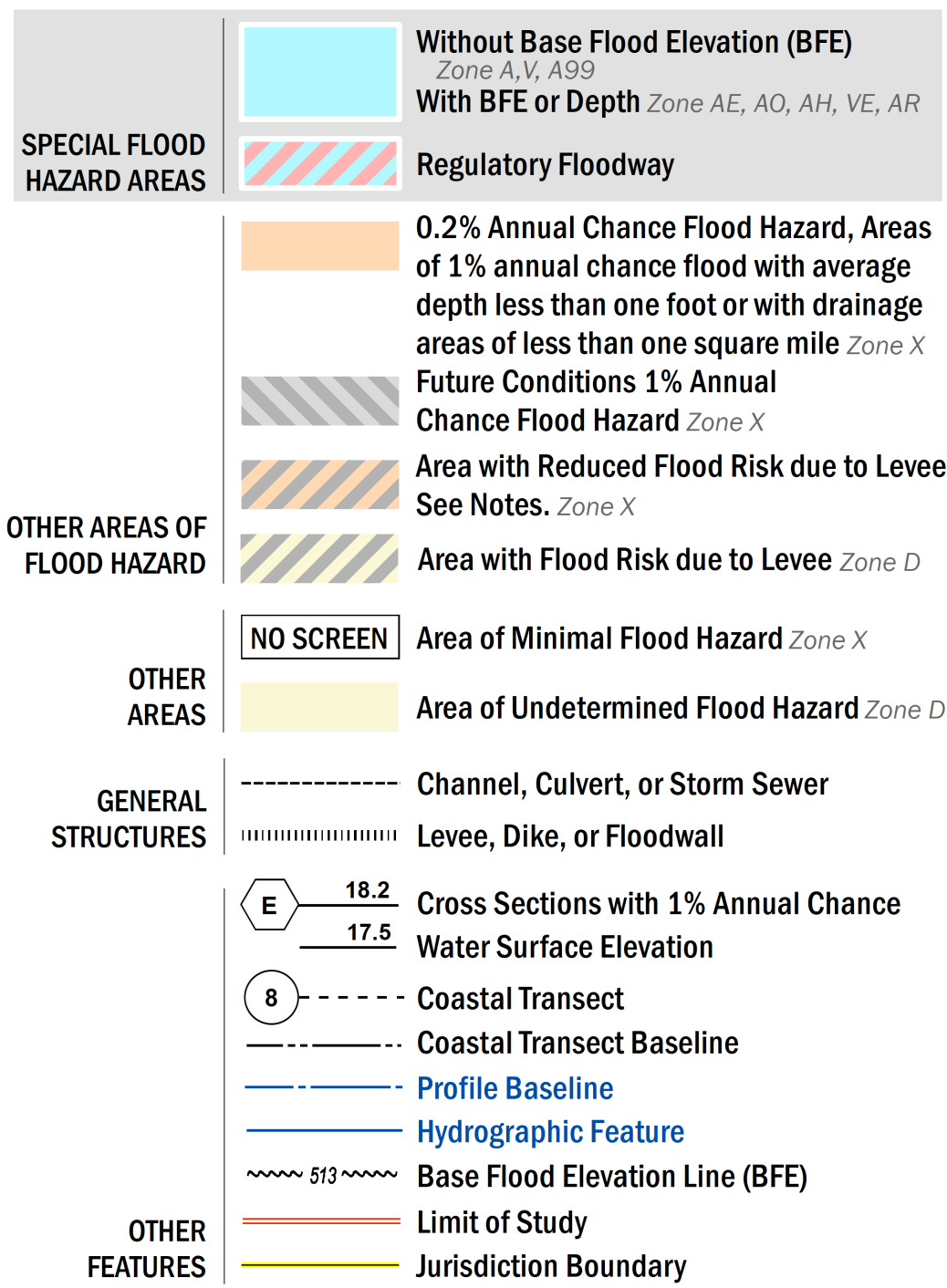


**FLOOD HAZARD INFORMATION**

SEE FIS REPORT FOR DETAILED LEGEND AND INDEX MAP FOR FIRM PANEL LAYOUT  
 THE INFORMATION DEPICTED ON THIS MAP AND SUPPORTING DOCUMENTATION ARE ALSO AVAILABLE IN DIGITAL FORMAT AT [HTTPS://MSC.FEMA.GOV](https://MSC.FEMA.GOV)



**NOTES TO USERS**

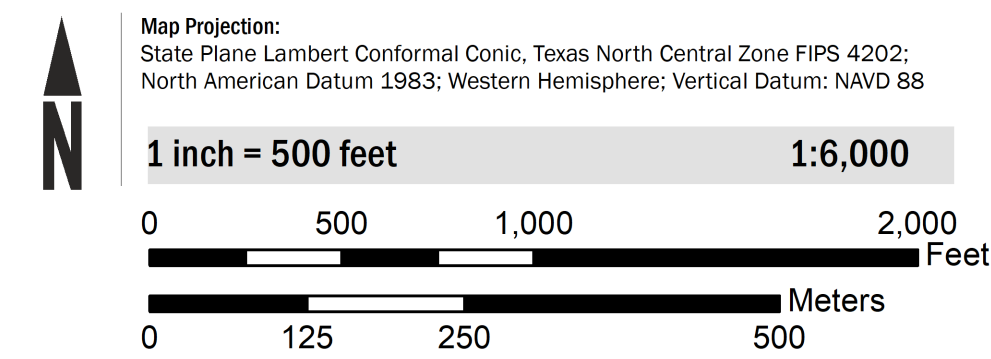
For information and questions about this Flood Insurance Rate Map (FIRM), available products associated with this FIRM, including historic versions, the current map date for each FIRM panel, how to order products, or the National Flood Insurance Program (NFIP) in general, please call the FEMA Map Information eXchange at 1-877-FEMA-MAP (1-877-336-2627) or visit the FEMA Flood Map Service Center website at <https://msc.fema.gov>. Available products may include previously issued Letters of Map Change, a Flood Insurance Study Report, and/or digital versions of this map. Many of these products can be ordered or obtained directly from the website.

Communities annexing land on adjacent FIRM panels must obtain a current copy of the adjacent panel as well as the current FIRM Index. These may be ordered directly from the Flood Map Service Center at the number listed above.

For community and countywide map dates refer to the Flood Insurance Study Report for this jurisdiction. To determine if flood insurance is available in this community, contact your insurance agent or call the National Flood Insurance Program at 1-800-638-6620.

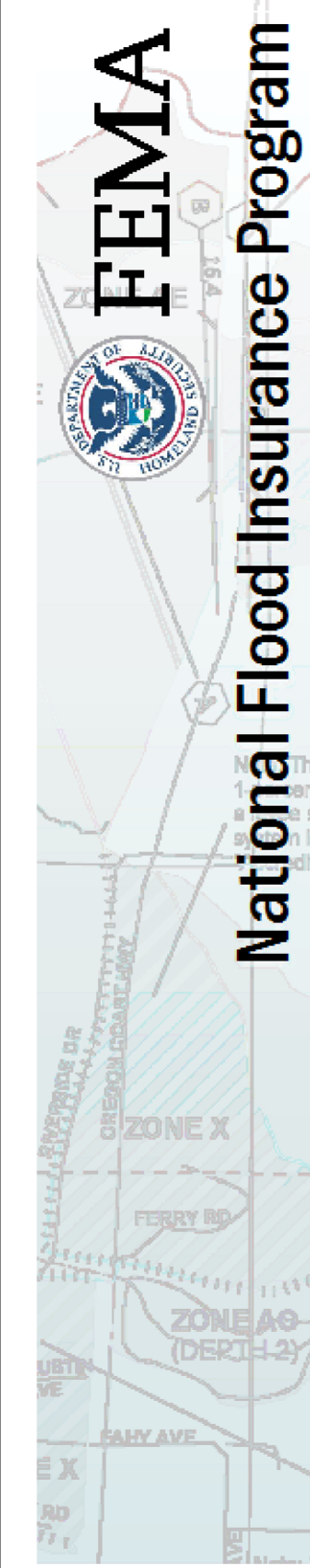
Base map information shown on this FIRM was derived from multiple sources. The Texas Natural Resources Information System (TNRIS) provided the Texas Department of Transportation (TxDOT) county boundaries and transportation layers dated 2015. The North Central Texas Council of Governments (NCTCOG) provided transportation layers and community boundaries dated 2019. Base map data for community boundaries was also provided by local communities dated 2019.

**SCALE**



**PANEL LOCATOR**

Dallas County	0304	0308	0309	0328	0329
	0312	0316	0317	0336	0337
0295	0313	0314	0318	0319	0338
0435	0451	0452	<b>0456</b>	0457	0476
	0453	0454	0458	0459	0478
0445	0466	0467	0486	0487	
	0468	0469	0488	0489	



**NATIONAL FLOOD INSURANCE PROGRAM  
 FLOOD INSURANCE RATE MAP**

DALLAS COUNTY, TEXAS  
 and Incorporated Areas  
 PANEL 456 OF 725



Panel Contains:

COMMUNITY	NUMBER	PANEL	SUFFIX
DALLAS, CITY OF	480171	0456	L
GRAND PRAIRIE, CITY OF	485472	0456	L

**PRELIMINARY  
 11/13/2020**

VERSION NUMBER  
 2.6.4.6  
 MAP NUMBER  
 48113C0456L  
 MAP REVISED