

Pottawattamie County

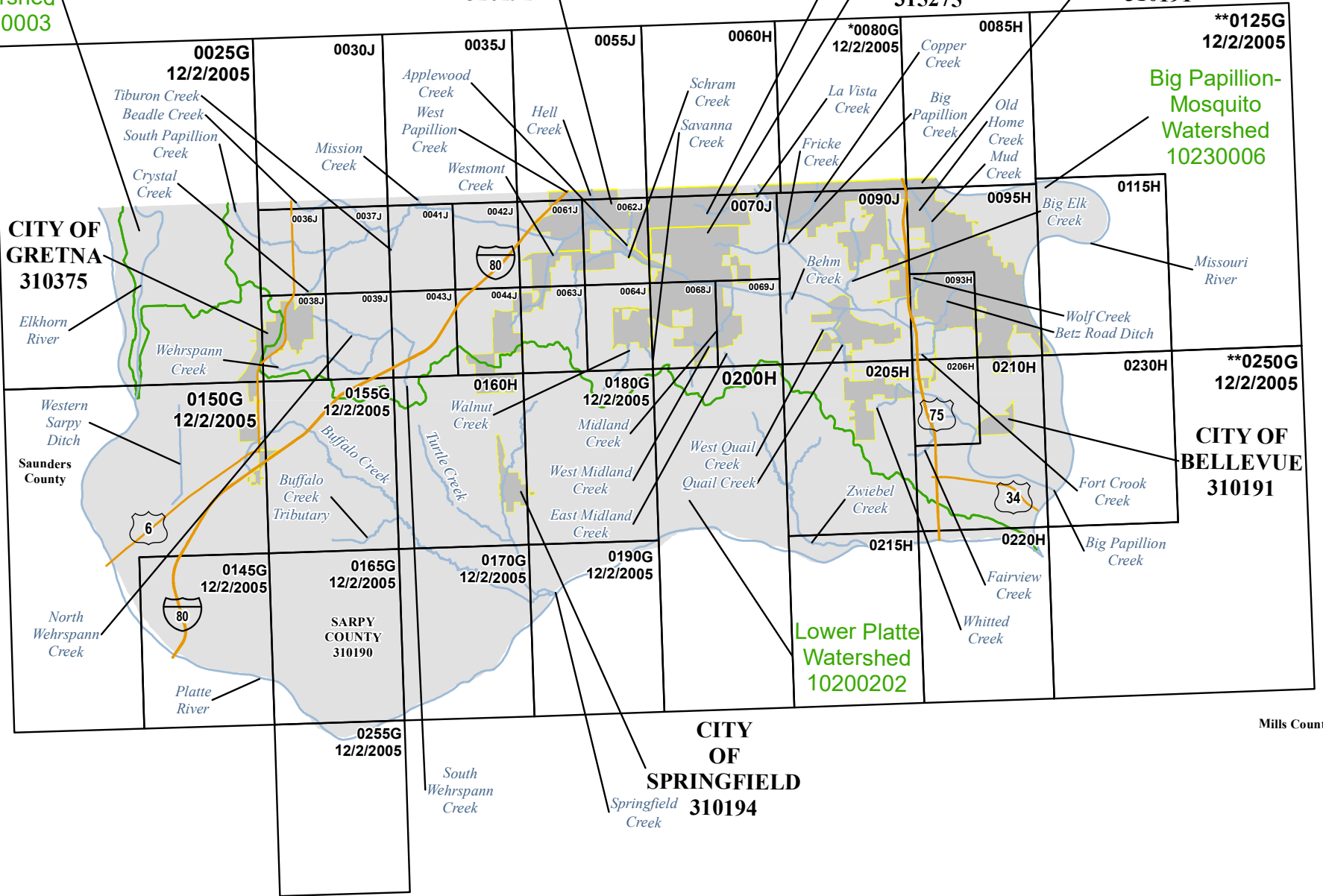
Douglas County

Lower Elkhorn Watershed 10220003

CITY OF LA VISTA 310192

CITY OF PAPIILLION 315275

CITY OF BELLEVUE 310191



\*\*0125G 12/2/2005

Big Papillion-Mosquito Watershed 10230006

CITY OF GRETNA 310375

\*\*0250G 12/2/2005

CITY OF BELLEVUE 310191

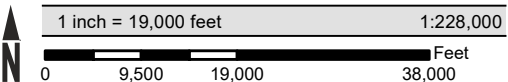
Lower Platte Watershed 10200202

CITY OF SPRINGFIELD 310194

Mills County

Cass County

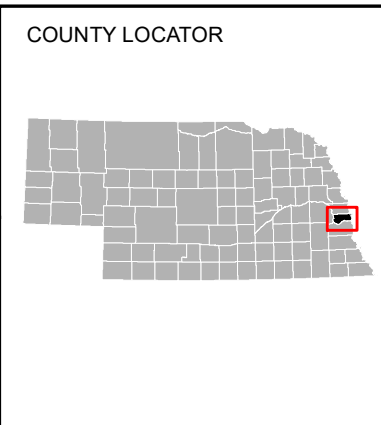
ATTENTION: The corporate limits shown on this FIRM Index are based on the best information available at the time of publication. As such, they may be more current than those shown on FIRM panels issued before TBD.



Map Projection: NAD 1983 UTM Zone 14N; Western Hemisphere; Vertical Datum: NAD 88

THE INFORMATION DEPICTED ON THIS MAP AND SUPPORTING DOCUMENTATION ARE ALSO AVAILABLE IN DIGITAL FORMAT AT [HTTPS://MSC.FEMA.GOV](https://MSC.FEMA.GOV)

SEE FLOOD INSURANCE STUDY FOR ADDITIONAL INFORMATION \*PANEL NOT PRINTED - NO SPECIAL FLOOD HAZARD AREAS \*\*PANEL NOT PRINTED - AREA OUTSIDE COUNTY BOUNDARY



NATIONAL FLOOD INSURANCE PROGRAM FLOOD INSURANCE RATE MAP INDEX

SARPY COUNTY, NEBRASKA and Incorporated Areas

PANELS PRINTED: 0025, 0030, 0035, 0036, 0037, 0038, 0039, 0041, 0042, 0043, 0044, 0055, 0060, 0061, 0062, 0063, 0064, 0068, 0069, 0070, 0085, 0090, 0093, 0095, 0115, 0145, 0150, 0155, 0160, 0165, 0170, 0180, 0190, 0200, 0205, 0206, 0210, 0215, 0220, 0230, 0255

REVISED PRELIMINARY 2/16/2024



FEMA

MAP NUMBER 31153CIND0C

MAP REVISED