

**NOTE TO USER**  
 Future revisions to this FIRM Index will only be issued to communities that are located on FIRM panels being revised. This FIRM Index therefore remains valid for FIRM panels dated TBD or earlier. Please refer to the "MOST RECENT FIRM PANEL DATE" column in the Listing of Communities table to determine the most recent FIRM index date for each community.

LISTING OF COMMUNITIES					
COMMUNITY NAME	COMMUNITY NUMBER	LOCATED ON PANEL(S)	INITIAL NFIP MAP DATE	INITIAL FIRM DATE	MOST RECENT FIRM PANEL DATE
CAVE, TOWN OF	290448	0220	DECEMBER 30, 1980	MARCH 15, 1984	SEPTEMBER 29, 2010
CHAIN OF ROCKS, VILLAGE OF	290750	0416	DECEMBER 30, 1980	MARCH 15, 1984	SEPTEMBER 29, 2010
ELSBERRY, CITY OF	290209	0110, 0120	MAY 10, 1974	MAY 2, 1977	SEPTEMBER 29, 2010
FOLEY, CITY OF	290210	0260, 0280, 0286	NOVEMBER 29, 1974	MARCH 1, 1978	SEPTEMBER 29, 2010
*FOUNTAIN NLAKES, VILLAGE OF	290459	0401, 0403			
*HAWK POINT, CITY OF	290201	0335, 0355			
LINCOLN COUNTY (UNINCORPORATED AREAS)	290869	0020 <sup>1</sup> , 0035, 0040, 0045, 0055, 0060, 0065, 0066, 0067, 0068, 0069, 0080, 0085, 0090, 0095, 0105, 0110, 0111, 0112, 0113, 0114, 0120, 0130, 0140, 0160, 0170, 0180, 0185, 0190, 0195, 0205, 0206, 0207, 0208, 0209, 0215, 0220, 0230, 0235, 0236, 0237, 0238, 0239, 0245, 0251, 0252, 0253, 0254, 0260, 0261, 0262, 0263, 0264, 0266, 0267, 0268, 0269, 0280, 0285, 0286, 0288, 0290, 0295, 0310 <sup>1</sup> , 0330, 0335, 0340 <sup>1</sup> , 0345 <sup>1</sup> , 0355, 0360, 0365, 0366, 0367, 0368, 0369, 0376, 0377, 0378, 0379, 0381, 0382, 0383, 0384, 0385, 0387, 0388, 0389, 0391, 0392, 0393, 0394, 0401, 0402, 0403, 0404, 0406, 0407, 0408, 0409, 0411, 0412, 0413, 0414, 0416, 0417, 0418, 0426, 0428, 0430, 0435, 0440, 0445, 0455, 0460 <sup>1</sup> , 0480 <sup>1</sup>	DECEMBER 30, 1980	MARCH 15, 1984	
MOSCOW MILLS, CITY OF	290546	0379, 0383, 0384, 0391, 0392	SEPTEMBER 29, 2010	SEPTEMBER 29, 2010	
OLD MONROE, CITY OF	290211	0409, 0416, 0417, 0428, 0440	NOVEMBER 8, 1974	AUGUST 15, 1978	SEPTEMBER 29, 2010
SILEX, VILLAGE OF	290212	0068, 0206	NOVEMBER 22, 1974	SEPTEMBER 16, 1982	SEPTEMBER 29, 2010
TROY, CITY OF	290641	0238, 0360, 0376, 0377, 0378, 0379, 0381, 0382, 0383, 0384, 0385, 0387	OCTOBER 29, 1976	MAY 5, 1981	
*TRUXTON, VILLAGE OF	290206	0190, 0330			
*WHITESIDE VILLAGE OF	290470	0067			
WINFIELD, CITY OF	290213	0288, 0407, 0426, 0428	DECEMBER 28, 1973	NOVEMBER 17, 1982	SEPTEMBER 29, 2010

<sup>1</sup> Non-Floodprone Community  
<sup>1</sup> Panel Not Printed

**BASE MAP SOURCE**

Base map information shown on this FIRM was provided in digital format by the United States Geological Survey (USGS), Missouri Department of Transportation, U.S. Army Corps of Engineers (USACE), and Federal Emergency Management Agency (FEMA). Other information was derived from digital orthophotography at a 1-meter resolution dated 2014 from U.S. Department of Agriculture National Aerial Imagery Program (NAIP).

**ELEVATION DATUM**

Flood elevations on this map are referenced to the North American Vertical Datum of 1988. These flood elevations must be compared to structure and ground elevations referenced to the same vertical datum. For information regarding conversion between the National Geodetic Vertical Datum of 1929 and the North American Vertical Datum of 1988, visit the National Geodetic Survey at the following address:

NGS Information Services  
 NOAA, NNGS 12  
 National Geodetic Survey  
 Silver Spring Metro Center-3, #9202  
 1315 East-West Highway  
 Silver Spring, Maryland 20910-3282  
 (301) 713-3242

**MAP DATES**

This FIRM Index displays the map date for each FIRM panel at the time that this index was printed. Because this index may not be distributed to unaffected communities in subsequent revisions, users may determine the current map date for each FIRM panel by visiting the FEMA Map Service Center website at <http://msc.fema.gov> or by calling the FEMA Map Information eXchange (FMIX) at 1-877-336-2627.

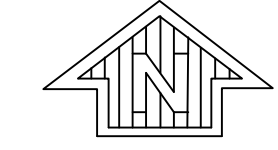
Communities annexing land on adjacent FIRM panels must obtain a current copy of the adjacent panel as well as the current FIRM Index. These may be ordered directly from the FEMA Map Information eXchange (FMIX) at the number listed above.

**NOTE TO USERS**

FEMA maintains information about map features, such as street locations and names, in or near designated flood hazard areas. Requests to revise information in or near designated flood hazard areas may be provided to FEMA during the community review period, at the Public Open House Meeting, or during the statutory 90-day appeal period. Approved requests for changes will be shown on the final printed FIRM.

**MAP REPOSITORIES**  
 (Maps available for reference only, not for distribution.)

- CAVE, TOWN OF:  
 Lincoln County  
 Emergency Management Office  
 250 West College Street  
 Troy, Missouri 63379
- CHAIN OF ROCKS, VILLAGE OF:  
 Clerk's Office  
 501 Jordan Road  
 Old Monroe, Missouri 63369
- ELSBERRY, CITY OF:  
 City Hall  
 201 Broadway Avenue  
 Elsberry, Missouri 63343
- FOLEY, CITY OF:  
 City Hall  
 617 Elm Street  
 Foley, Missouri 63347
- LINCOLN COUNTY (UNINCORPORATED AREAS):  
 Emergency Management Office  
 250 West College Street  
 Troy, Missouri 63379
- MOSCOW MILLS, CITY OF:  
 City Hall  
 500 Hwy MM  
 Moscow Mills, Missouri 63362
- OLD MONROE, CITY OF:  
 City Hall  
 151 Main Street  
 Old Monroe, Missouri 63369
- SILEX, VILLAGE OF:  
 Village Hall  
 310 Cherry Street  
 Silex, Missouri 63377
- TROY, CITY OF:  
 City Hall  
 800 Cap Au Gris Street  
 Troy, Missouri 63379
- WINFIELD, CITY OF:  
 City Office  
 51 Old Troy Road  
 Winfield, Missouri 63389



**NATIONAL FLOOD INSURANCE PROGRAM**

**MAP INDEX**

**FIRM  
 FLOOD INSURANCE RATE MAP  
 LINCOLN COUNTY,  
 MISSOURI  
 AND INCORPORATED AREAS  
 (SEE LISTING OF COMMUNITIES TABLE)**

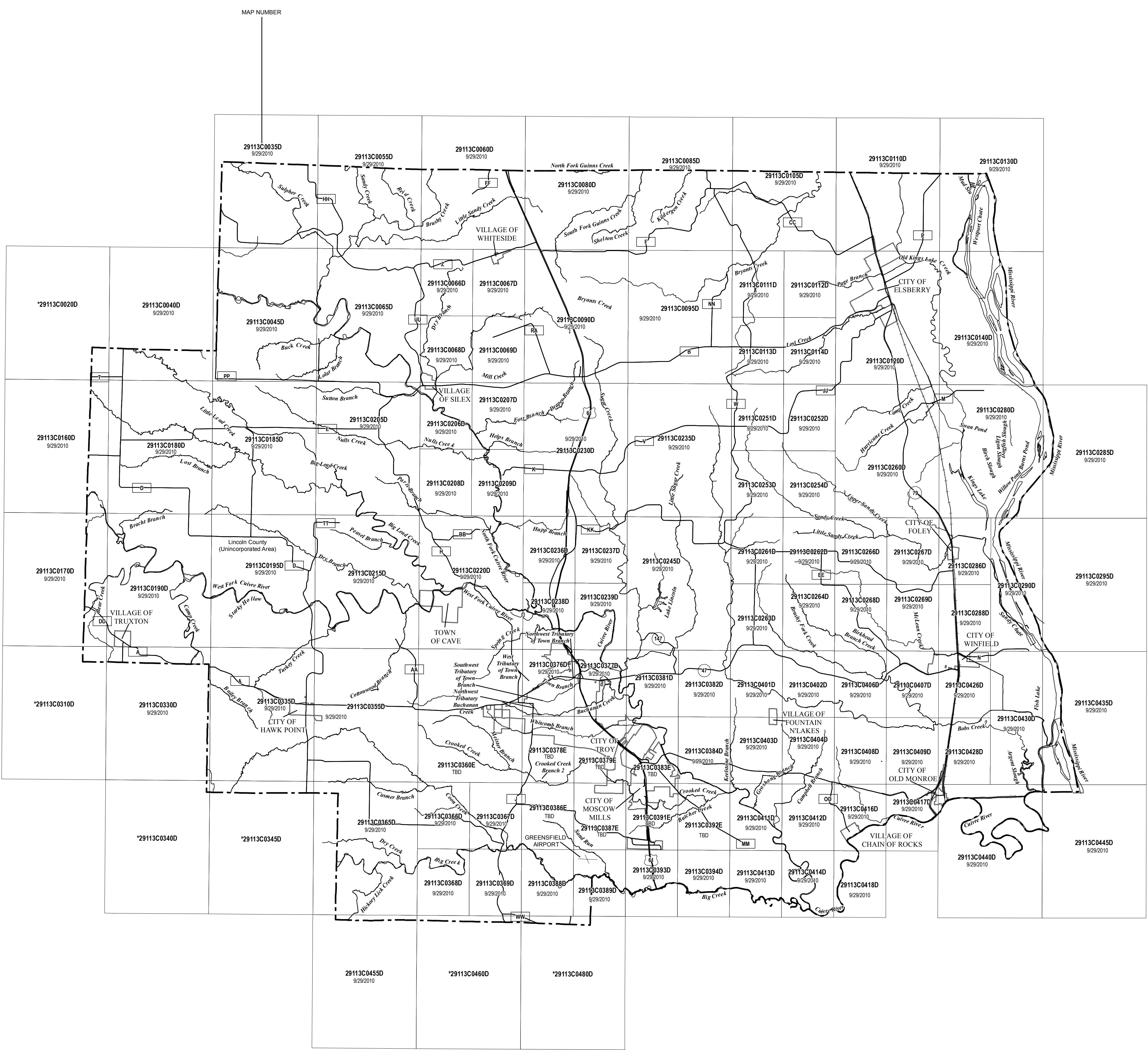
**MAP INDEX**

**PANELS PRINTED:** 35, 40, 45, 55, 60, 65, 66, 67, 68, 69, 80, 85, 90, 95, 105, 110, 111, 112, 113, 114, 120, 130, 140, 160, 170, 180, 185, 190, 195, 205, 206, 207, 208, 209, 215, 220, 230, 235, 236, 237, 238, 239, 245, 251, 252, 253, 254, 260, 261, 262, 263, 264, 266, 267, 268, 269, 280, 285, 286, 288, 290, 295, 330, 335, 355, 360, 365, 366, 367, 368, 369, 376, 377, 378, 379, 381, 382, 383, 384, 386, 387, 388, 389, 391, 392, 393, 394, 401, 402, 403, 404, 406, 407, 408, 409, 411, 412, 413, 414, 416, 417, 418, 426, 428, 430, 435, 440, 445, 455

**PRELIMINARY  
 SEPTEMBER 30, 2016**

**MAP NUMBER  
 29113CIND0B  
 MAP REVISED  
 TBD**

Federal Emergency Management Agency



\* PANEL NOT PRINTED - NO SPECIAL FLOOD HAZARD AREAS