

FLOOD HAZARD INFORMATION

SEE FIS REPORT FOR DETAILED LEGEND AND INDEX MAP FOR FIRM PANEL LAYOUT
THE INFORMATION DEPICTED ON THIS MAP AND SUPPORTING DOCUMENTATION ARE ALSO AVAILABLE IN DIGITAL FORMAT AT [HTTPS://MSC.FEMA.GOV](https://MSC.FEMA.GOV)

	Without Base Flood Elevation (BFE) Zone A, V, A99 With BFE or Depth Zone AE, AO, AH, VE, AR
	Regulatory Floodway
	0.2% Annual Chance Flood Hazard, Areas of 1% annual chance flood with average depth less than one foot or with drainage areas of less than one square mile Zone X
	Future Conditions 1% Annual Chance Flood Hazard Zone X
	Area with Reduced Flood Risk due to Levee See Notes. Zone X
	Area with Flood Risk due to Levee Zone D
	NO SCREEN Area of Minimal Flood Hazard Zone X
	Area of Undetermined Flood Hazard Zone D
	Channel, Culvert, or Storm Sewer
	Levee, Dike, or Floodwall
	Cross Sections with 1% Annual Chance Water Surface Elevation
	Coastal Transect
	Coastal Transect Baseline
	Profile Baseline
	Hydrographic Feature
	Base Flood Elevation Line (BFE)
	Limit of Study
	Jurisdiction Boundary

NOTES TO USERS

For information and questions about this map, available products associated with this FIRM including historic versions of this FIRM, how to order products or the National Flood Insurance Program in general, please call the FEMA Map Information Exchange at 1-877-FEMA-MAP (1-877-336-6221) or visit the FEMA Map Service Center website at <http://msc.fema.gov>. Available products may include previously issued Letters of Map Change, a Flood Insurance Study Report, and/or digital versions of this map. Many of these products can be ordered or obtained directly from the website. Users may determine the current map date for each FIRM panel by visiting the FEMA Map Service Center website or by calling the FEMA Map Information Exchange.

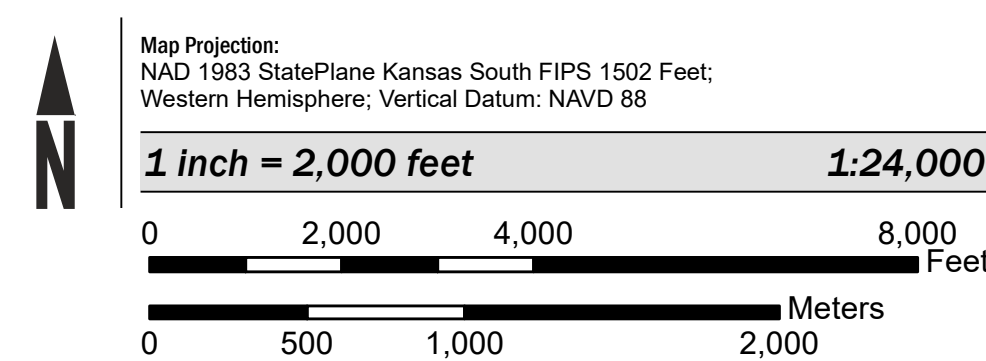
Communities annexing land on adjacent FIRM panels must obtain a current copy of the adjacent panel as well as the current FIRM Index. These may be ordered directly from the Map Service Center at the number listed above.

For community and countywide map dates refer to the Flood Insurance Study report for this jurisdiction.

To determine if flood insurance is available in the community, contact your insurance agent or call the National Flood Insurance Program at 1-800-638-9620.

Base map information shown on the FIRM was provided by USDA Farm Service Agency, National Agriculture Imagery Program (NAIP), dated 2017. For more information about base maps, refer to section 6.2 "Base Map" in this FIS Report.

SCALE



PANEL LOCATOR



NATIONAL FLOOD INSURANCE PROGRAM
 FLOOD INSURANCE RATE MAP

OSAGE COUNTY,
 KANSAS
 and Incorporated Areas
 PANEL 200 of 500



Panel Contains:

COMMUNITY	NUMBER	PANEL	SUFFIX
OSAGE COUNTY	200601	0200	D



PRELIMINARY
 4/14/2020

VERSION NUMBER
 2.4.3.5
 MAP NUMBER
 20139C0200D
 MAP REVISED