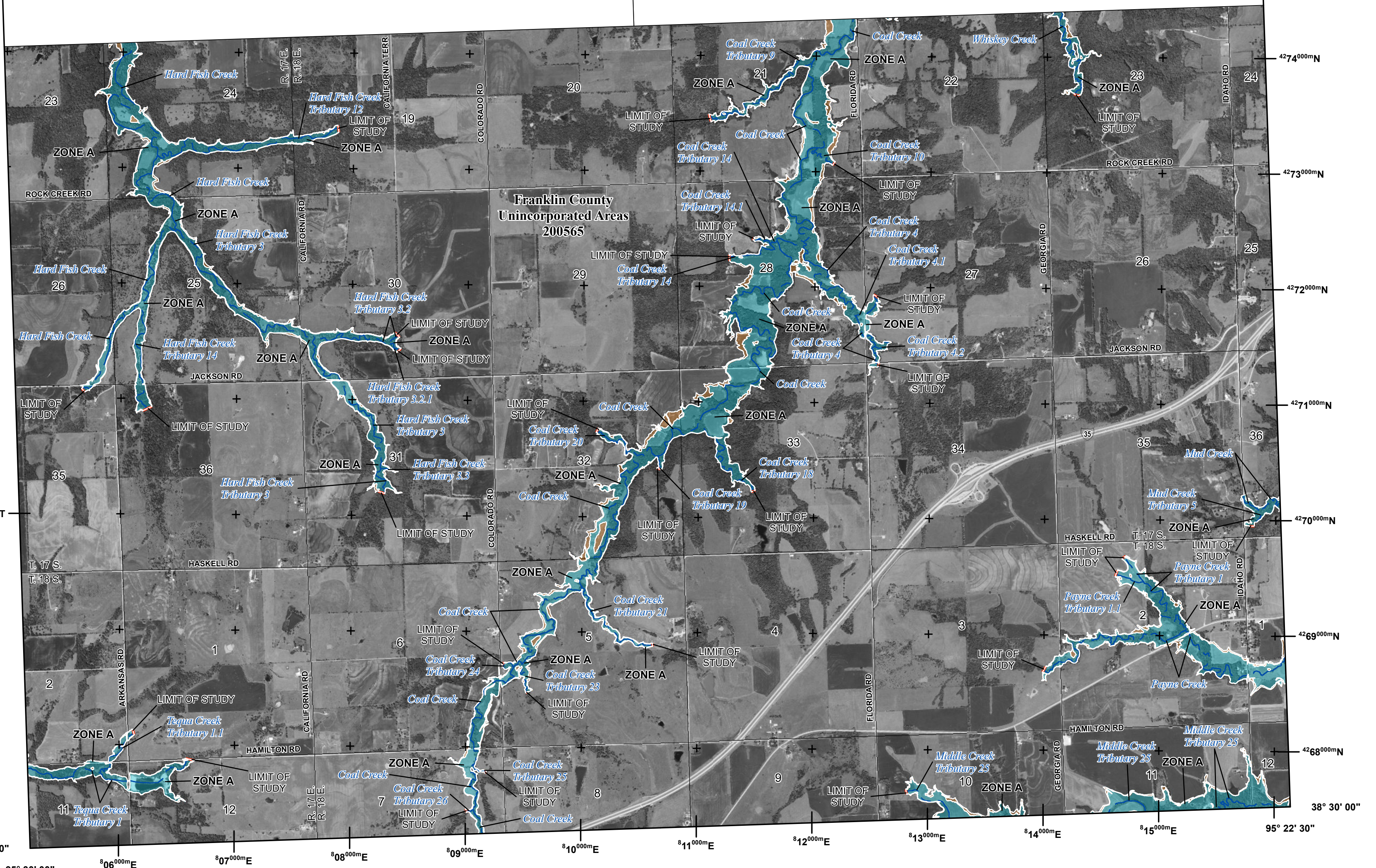


THIS AREA SHOWN AT A
SCALE OF 1" = 1000' ON
MAP NUMBER 20059C0155

THIS AREA SHOWN AT A
SCALE OF 1" = 1000' ON
MAP NUMBER 20059C0160



FLOOD HAZARD INFORMATION

SEE FIS REPORT FOR DETAILED LEGEND AND INDEX MAP FOR FIRM PANEL LAYOUT
THE INFORMATION DEPICTED ON THIS MAP AND SUPPORTING
DOCUMENTATION ARE ALSO AVAILABLE IN DIGITAL FORMAT AT
[HTTP://MSC.FEMA.GOV](http://msc.fema.gov)

| | |
|--|---|
| | Without Base Flood Elevation (BFE) Zone A, V, A99 With BFE or Depth Zone AE, AO, AH, VE, AR |
| | Regulatory Floodway |
| | 0.2% Annual Chance Flood Hazard, Areas of 1% annual chance flood with average depth less than one foot or with drainage areas of less than one square mile |
| | Future Conditions 1% Annual Chance Flood Hazard Zone X |
| | Area with Reduced Flood Risk due to Levee See Notes. Zone X |
| | Area with Flood Risk due to Levee |
| | Area of Minimal Flood Hazard Zone X |
| | Area of Undetermined Flood Hazard |
| | Channel, Culvert, or Storm Sewer |
| | Levee, Dike, or Floodwall |
| | Cross Sections with 1% Annual Chance Water Surface Elevation |
| | Coastal Transect |
| | Coastal Transect Baseline |
| | Profile Baseline |
| | Hydrographic Feature |
| | Base Flood Elevation Line (BFE) |
| | Limit of Study |
| | Jurisdiction Boundary |

NOTES TO USERS

For information and questions about this map, available products associated with this FIRM including historic versions of this FIRM, how to order products or the National Flood Insurance Program in general, please call the FEMA Map Information eXchange at 1-877-FEMA-MAP (1-877-336-2627) or visit the FEMA Map Service Center website at <http://msc.fema.gov>. Available products may include previously issued Letters of Map Change, a Flood Insurance Study Report, and/or digital versions of this map. Many of these products can be ordered or obtained directly from the website. Users may determine the current map date for each FIRM panel by visiting the FEMA Map Service Center website or by calling the FEMA Map Information eXchange.

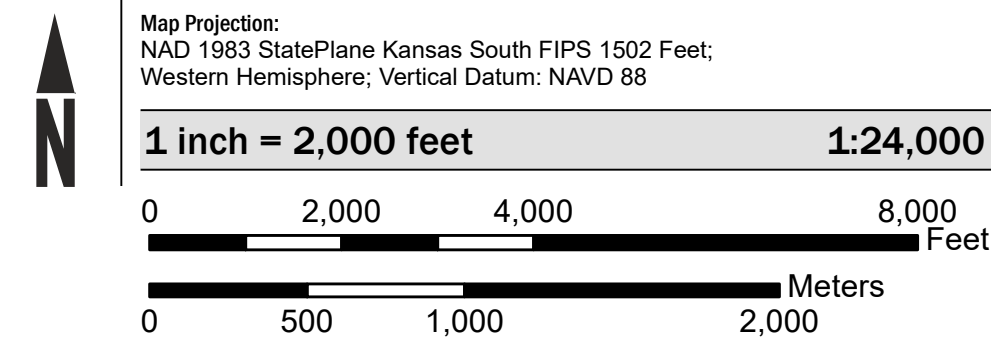
Communities annexing land on adjacent FIRM panels must obtain a current copy of the adjacent panel as well as the current FIRM index. These may be ordered directly from the Map Service Center at the number listed above.

For community and countywide map dates refer to the Flood Insurance Study report for this jurisdiction.

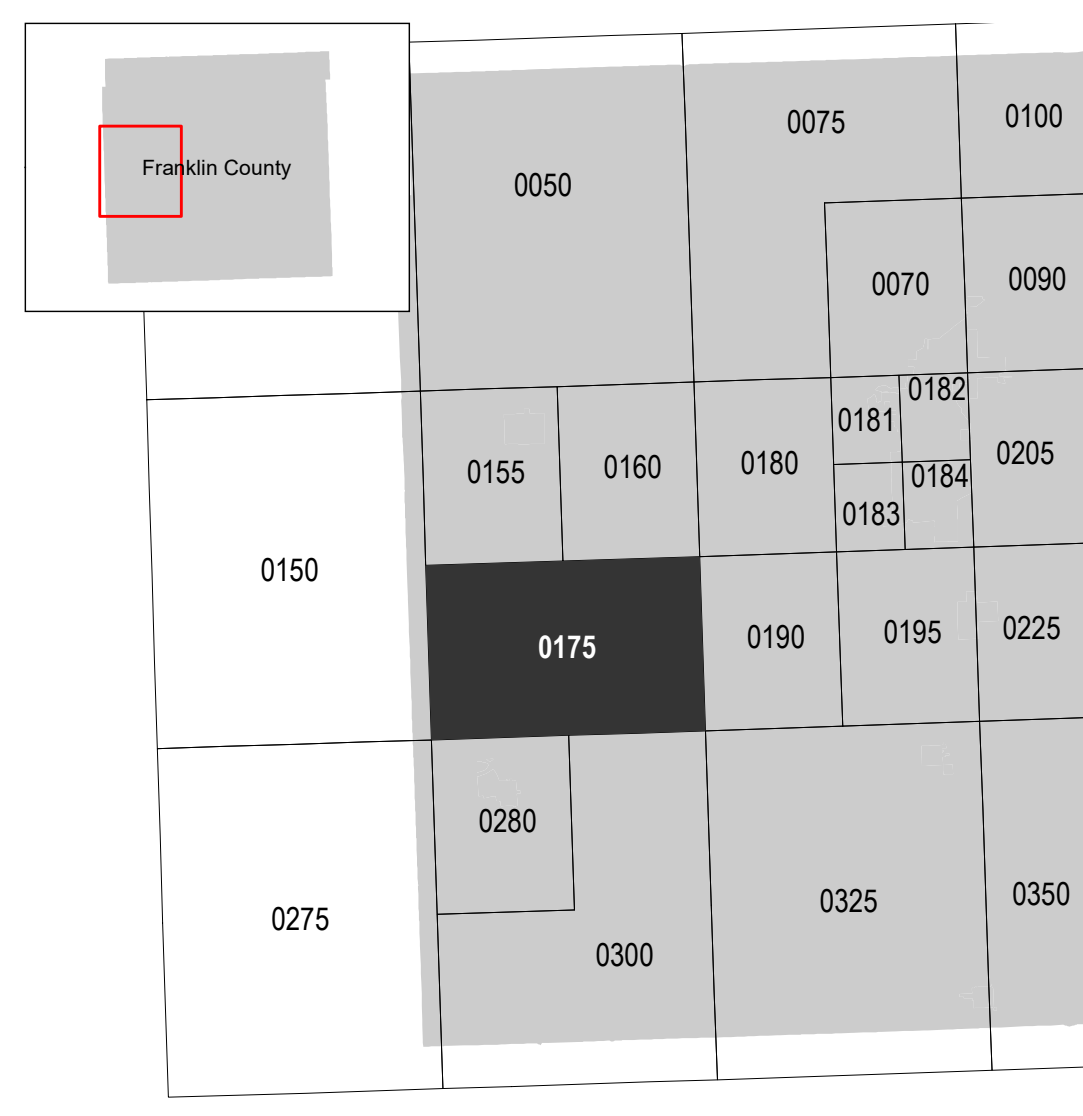
To determine if flood insurance is available in the community, contact your insurance agent or call the National Flood Insurance Program at 1-800-638-8620.

Base map information shown on the FIRM was provided by Franklin County, Kansas dated 2017. For information about base maps refer to Section 6.2 "Base Map" in this FIS Report.

SCALE



PANEL LOCATOR



NATIONAL FLOOD INSURANCE PROGRAM
FLOOD INSURANCE RATE MAP

FRANKLIN COUNTY,
KANSAS
and Incorporated Areas
PANEL 175 of 375



Panel Contains:

| COMMUNITY | NUMBER | PANEL | SUFFIX |
|-----------------|--------|-------|--------|
| FRANKLIN COUNTY | 200565 | 0175 | E |

PRELIMINARY
6/9/2020
VERSION NUMBER
2.4.3.5
MAP NUMBER
20059C0175E
MAP REVISED