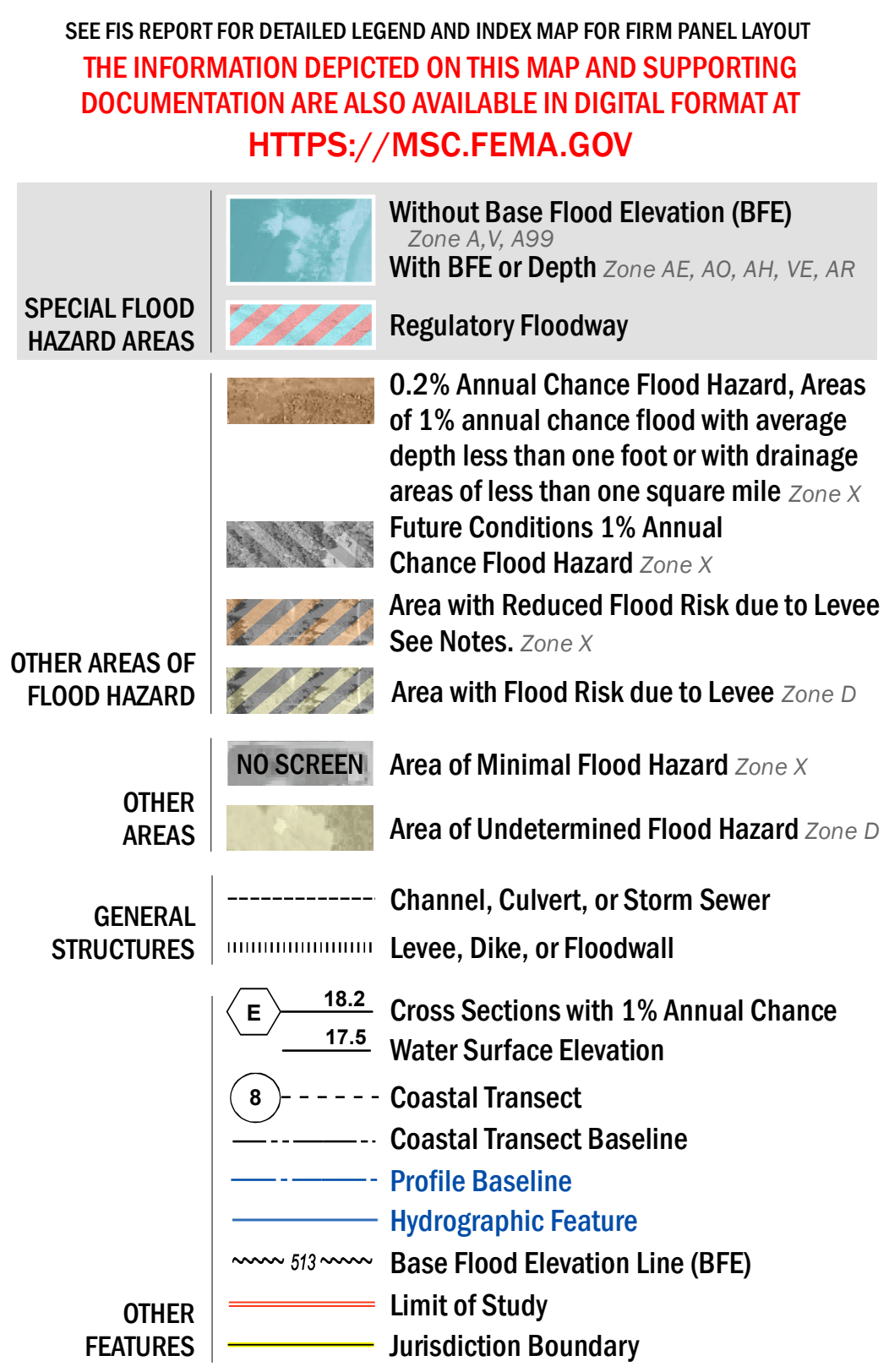


FLOOD HAZARD INFORMATION



NOTES TO USERS

For information and questions about this Flood Insurance Rate Map (FIRM), available products associated with this FIRM, including historic versions, the current map date for each FIRM panel, how to order products, or the National Flood Insurance Program (NFIP) in general, please call the FEMA Mapping and Insurance eXchange at 1-877-FEMA-MAP (1-877-336-2627) or visit the FEMA Flood Map Service Center website at <https://msc.fema.gov>. Available products may include previously issued Letters of Map Change, a Flood Insurance Study Report, and/or digital versions of this map. Many of these products can be ordered or obtained directly from the website.

Communities annexing land on adjacent FIRM panels must obtain a current copy of the adjacent panel as well as the current FIRM index. These may be ordered directly from the Flood Map Service Center at the number listed above.

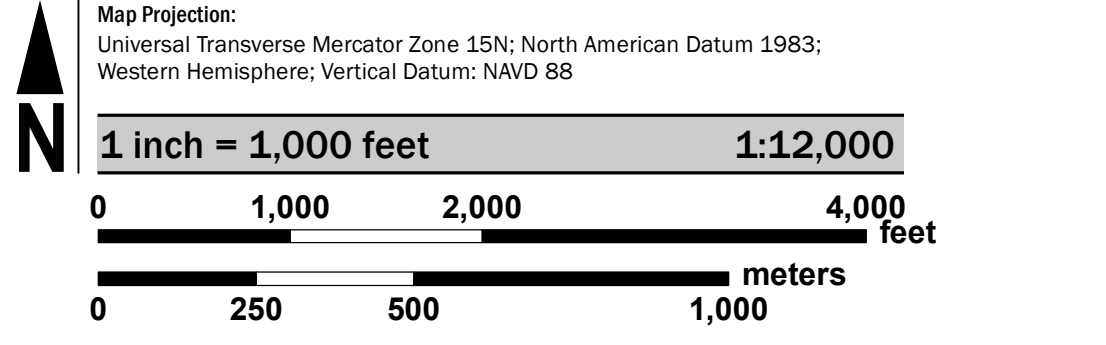
For community and countywide map dates refer to the Flood Insurance Study Report for this jurisdiction.

To determine if flood insurance is available in this community, contact your insurance agent or call the National Flood Insurance Program at 1-800-638-6629.

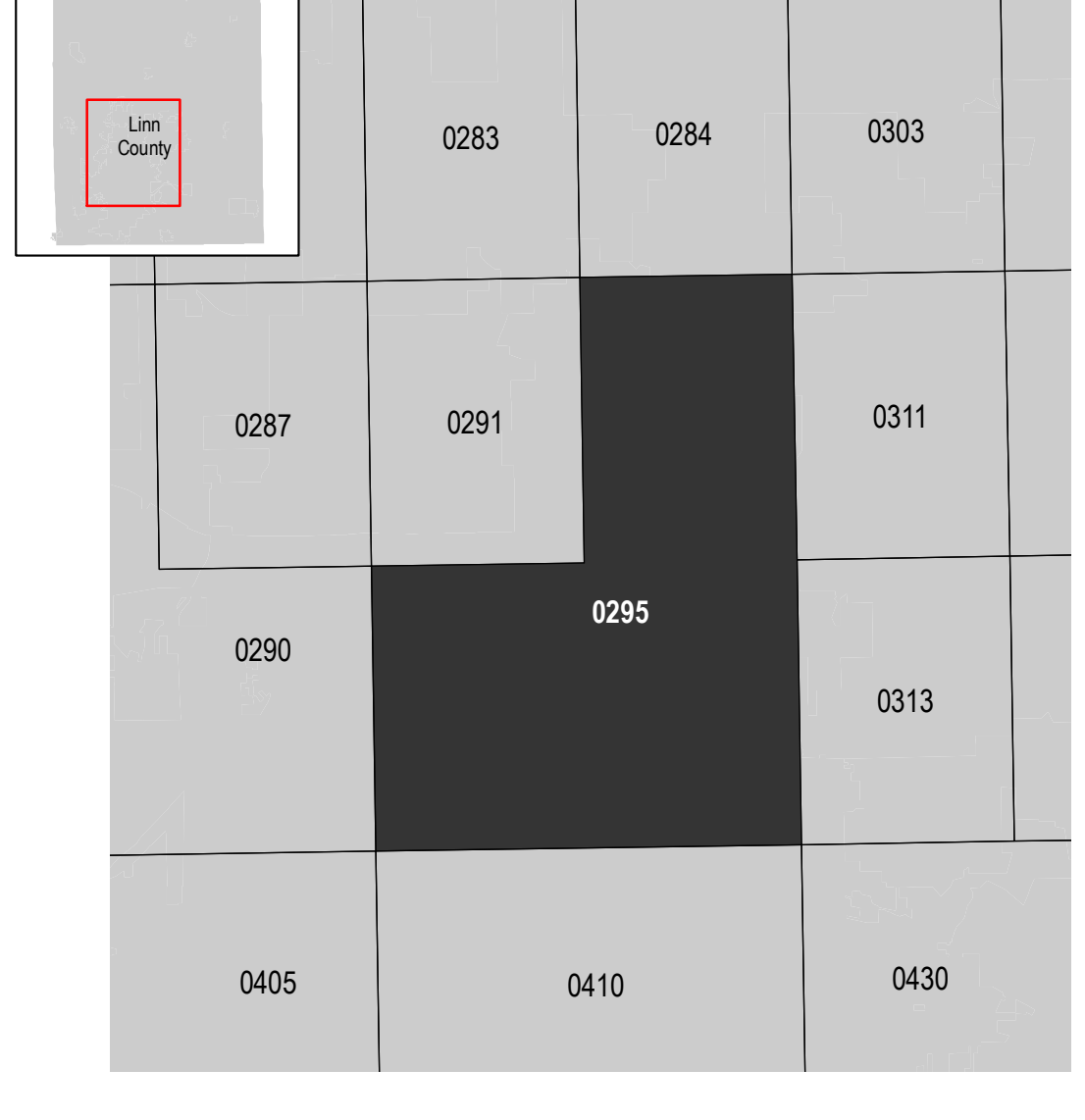
Base map information shown on this FIRM was derived from digital orthophotography collected by the US Department of Agriculture Farm Service Agency. This imagery was flown in 2019.

The map reflects more detailed and up-to-date stream channel configurations than those shown on the previous FIRM for this jurisdiction. The floodplains and floodways that were transferred from the previous FIRM may have been adjusted to conform to these new stream channel configurations. As a result, the Flood Profiles and floodway Data tables may reflect stream channel distances that differ from what is shown on the map.

SCALE



PANEL LOCATOR



FEMA
 National Flood Insurance Program

NATIONAL FLOOD INSURANCE PROGRAM
 FLOOD INSURANCE RATE MAP
 LINN COUNTY, IOWA
 and Incorporated Areas
 PANEL 295 of 625

Panel Contains:
 COMMUNITY: CEDAR RAPIDS, CITY OF; LINN COUNTY; MARION, CITY OF

NUMBER	PANEL	SUFFIX
190187	0295	F
190829	0295	F
190191	0295	F

PRELIMINARY
 3/21/2022

VERSION NUMBER: 2.64.0
 MAP NUMBER: 19113C0295F
 MAP REVISED