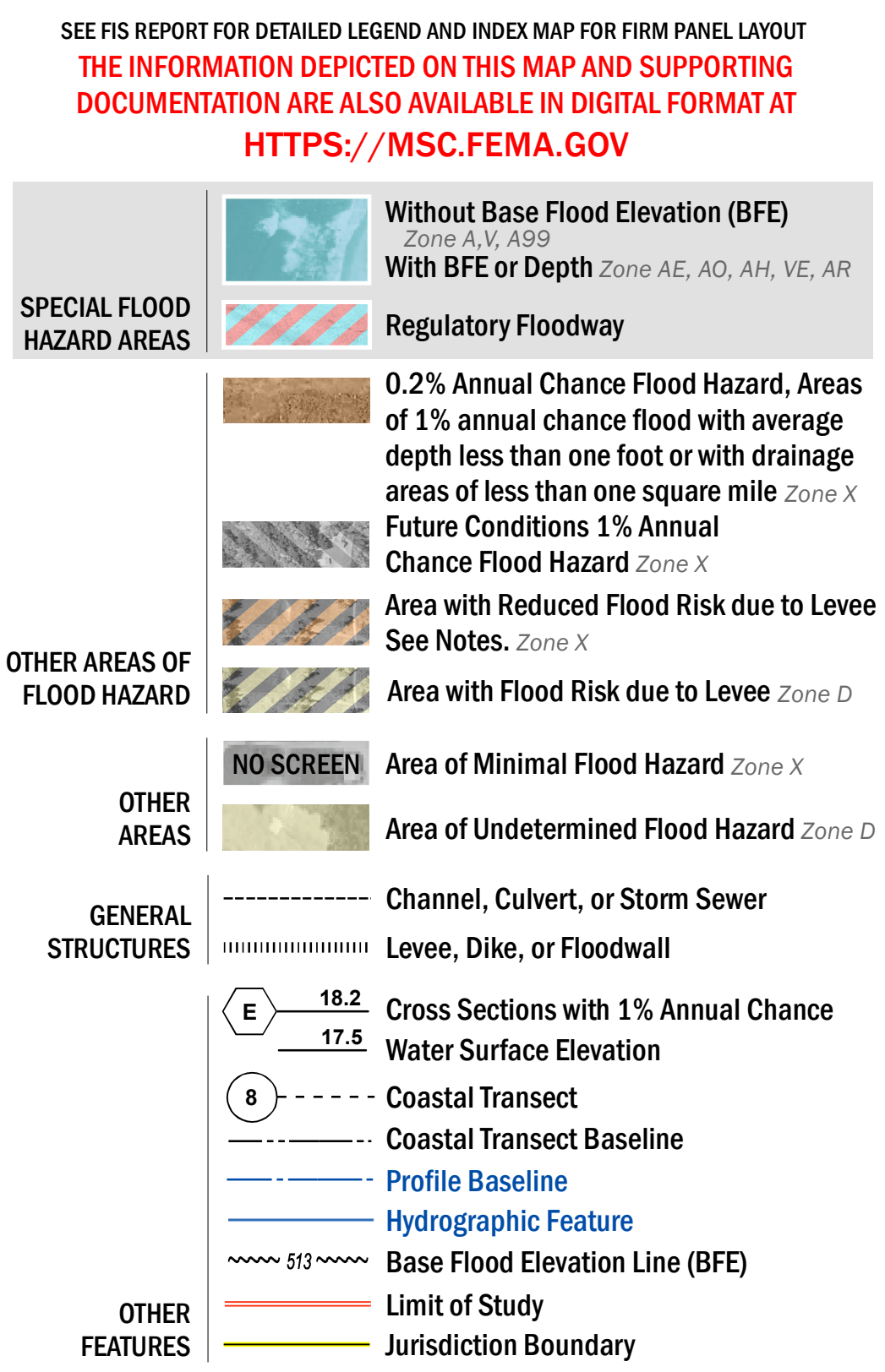


**FLOOD HAZARD INFORMATION**



**NOTES TO USERS**

For information and questions about this Flood Insurance Rate Map (FIRM), available products associated with this FIRM, including historic versions, the current map date for each FIRM panel, how to order products, or the National Flood Insurance Program (NFIP) in general, please call the FEMA Mapping and Insurance eXchange at 1-877-FEMA-MAP (1-877-336-2627) or visit the FEMA Flood Map Service Center website at <https://msc.fema.gov>. Available products may include previously issued Letters of Map Change, a Flood Insurance Study Report, and/or digital versions of this map. Many of these products can be ordered or obtained directly from the website.

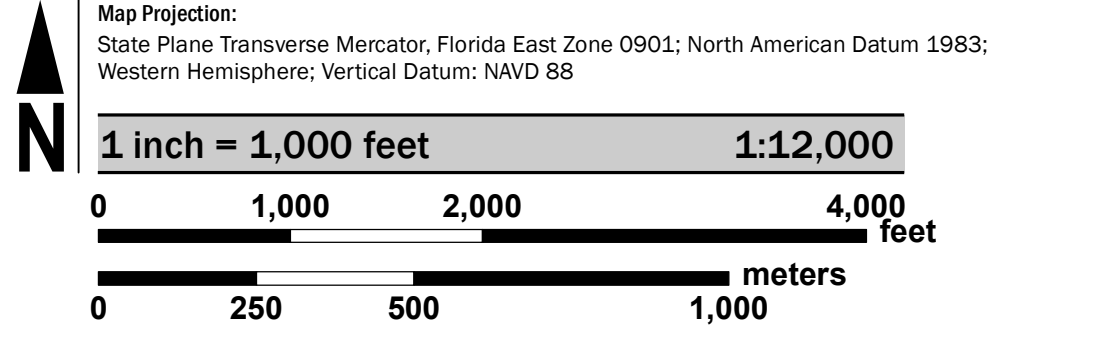
Communities annexing land on adjacent FIRM panels must obtain a current copy of the adjacent panel as well as the current FIRM index. These may be ordered directly from the Flood Map Service Center at the number listed above.

For community and countywide map dates refer to the Flood Insurance Study Report for this jurisdiction.

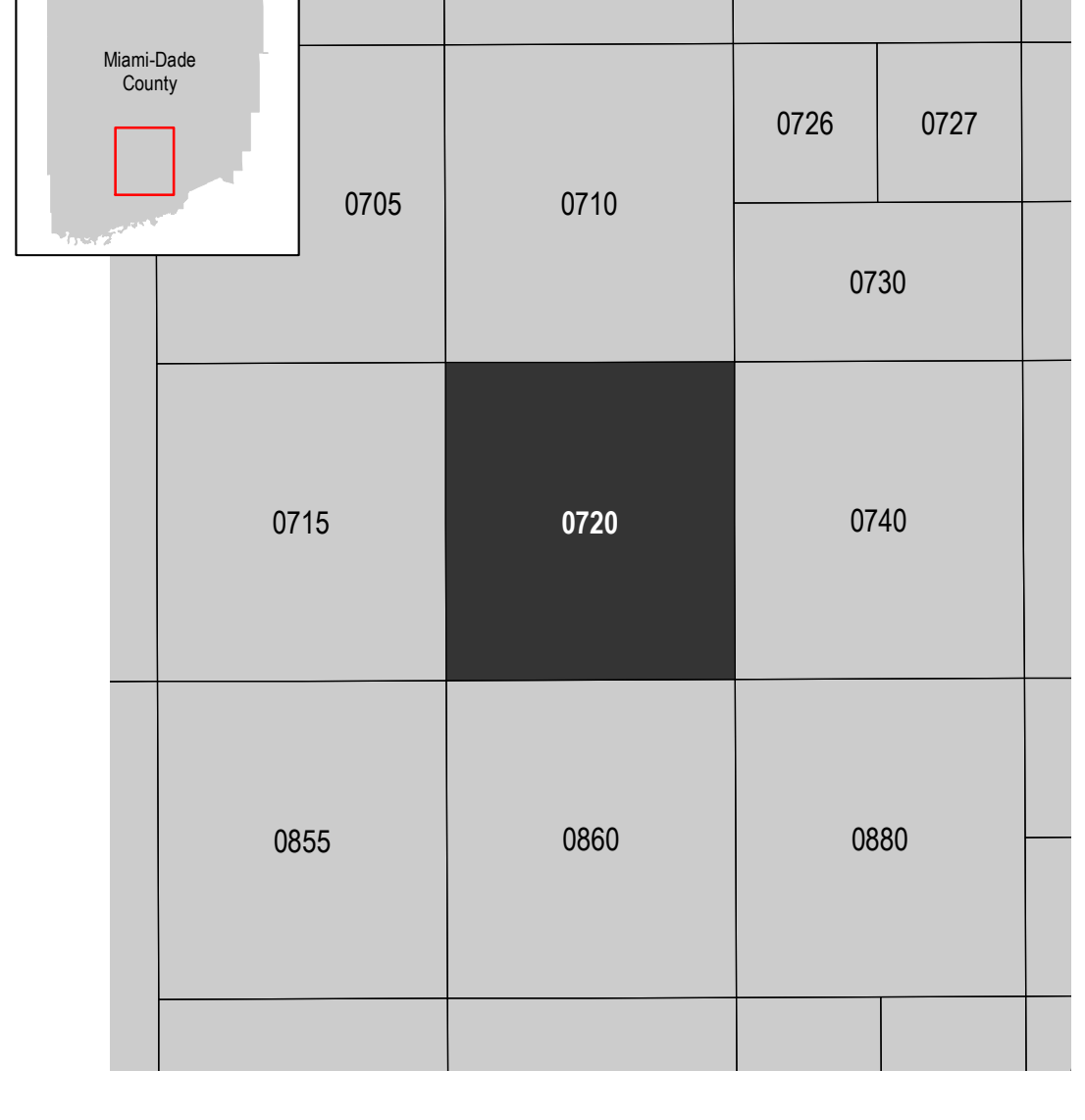
To determine if flood insurance is available in this community, contact your insurance agent or call the National Flood Insurance Program at 1-800-638-6620.

Base map information shown on this FIRM was provided in digital format by Miami-Dade County, dated 2001, 2018 and 2019; the South Florida Water Management District, dated 2003; the U.S. Army Corps of Engineers, dated 2020; and the U.S. Department of Agriculture, dated 2020.

**SCALE**



**PANEL LOCATOR**



**FEMA**  
 National Flood Insurance Program

**NATIONAL FLOOD INSURANCE PROGRAM**  
 FLOOD INSURANCE RATE MAP

**MIAMI-DADE COUNTY, FLORIDA**  
 and Incorporated Areas

PANEL 720 OF 1031

Panel Contains:  
 COMMUNITY MIAMI-DADE COUNTY      NUMBER 120635      PANEL 0720      SUFFIX M

**REVISED PRELIMINARY 8/8/2024**

VERSION NUMBER 2.6.3.5  
 MAP NUMBER 12086C0720M  
 MAP REVISED