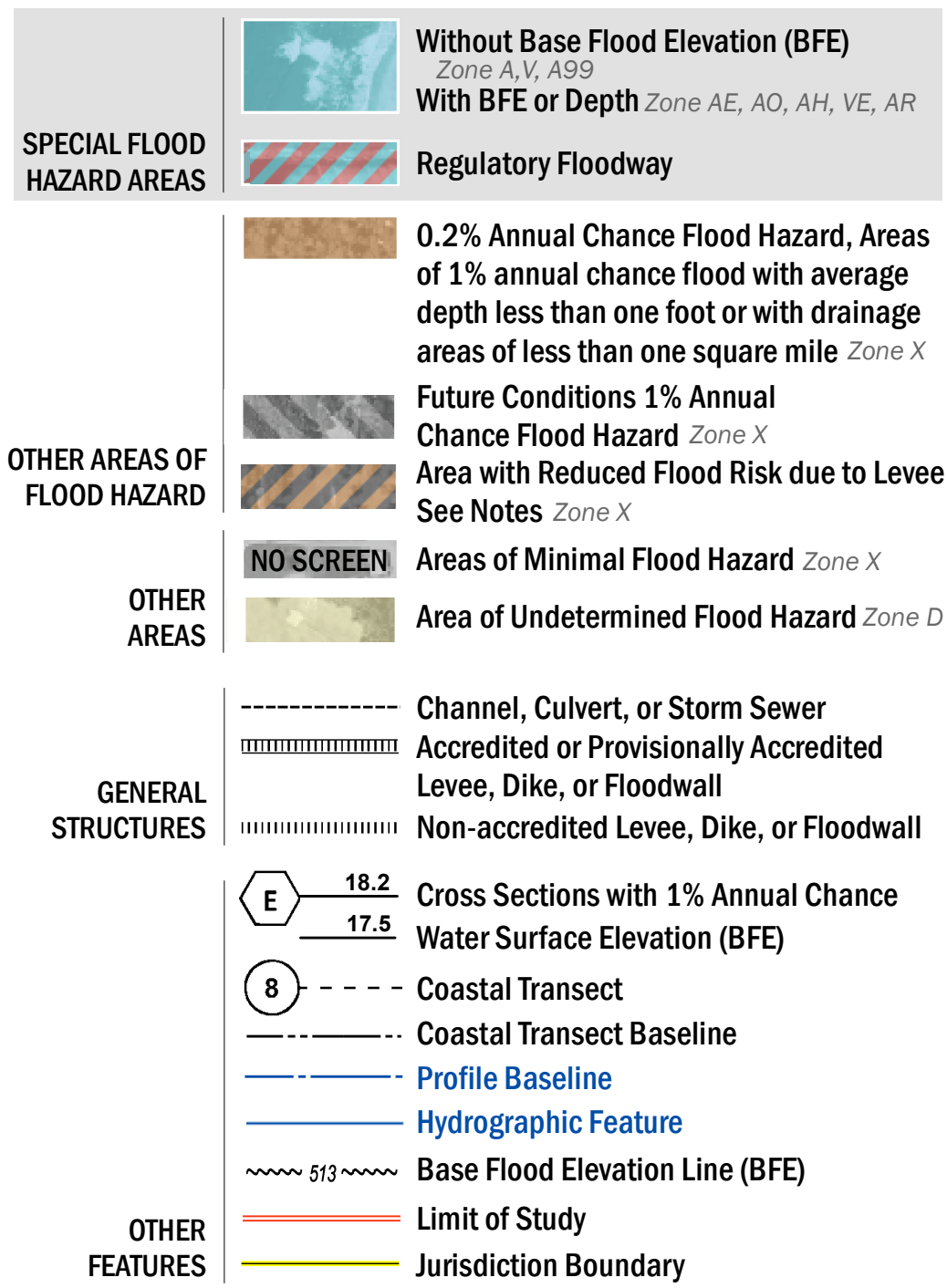


FLOOD HAZARD INFORMATION

SEE FIS REPORT FOR DETAILED LEGEND AND INDEX MAP FOR FIRM PANEL LAYOUT
THE INFORMATION DEPICTED ON THIS MAP AND SUPPORTING DOCUMENTATION ARE ALSO AVAILABLE IN DIGITAL FORMAT AT [HTTP://MSC.FEMA.GOV](http://msc.fema.gov)



NOTES TO USERS

For information and questions about this map, available products associated with this FIRM including historic versions of the FIRM, how to order products or the National Flood Insurance Program in general, please call the FEMA Map Information eXchange at 1-877-FEMA-MAP (1-877-336-2627) or visit the FEMA Map Service Center website at <http://msc.fema.gov>. Available products may include previously issued Letters of Map Change, a Flood Insurance Study Report, and/or digital versions of this map. Many of these products can be ordered or obtained directly from the website. Users may determine the current map date for each FIRM panel by visiting the FEMA Map Service Center website or by calling the FEMA Map Information eXchange.

Communities annexing land on adjacent FIRM panels must obtain a current copy of the adjacent panel as well as the current FIRM Index. These may be ordered directly from the Map Service Center at the number listed above.

For community and countywide map dates refer to the Flood Insurance Study report for this jurisdiction.

To determine if flood insurance is available in this community, contact your insurance agent or call the National Flood Insurance Program at 1-800-638-6620.

Base Map information shown on this FIRM was derived from multiple sources and was provided in digital format using source material at a scale of 1:24,000 or larger.

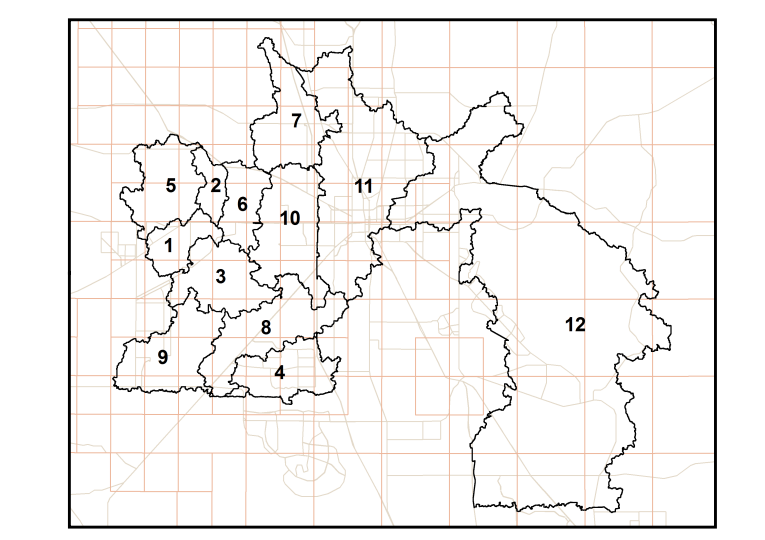
1NE0100 Junction - Points defining flow accumulation or hydraulic connectivity. The first character of the Junction name represents the specific watershed (as shown in the table below) in which the junction is located.

Hydraulic Connectivity - Flow pathway between junctions

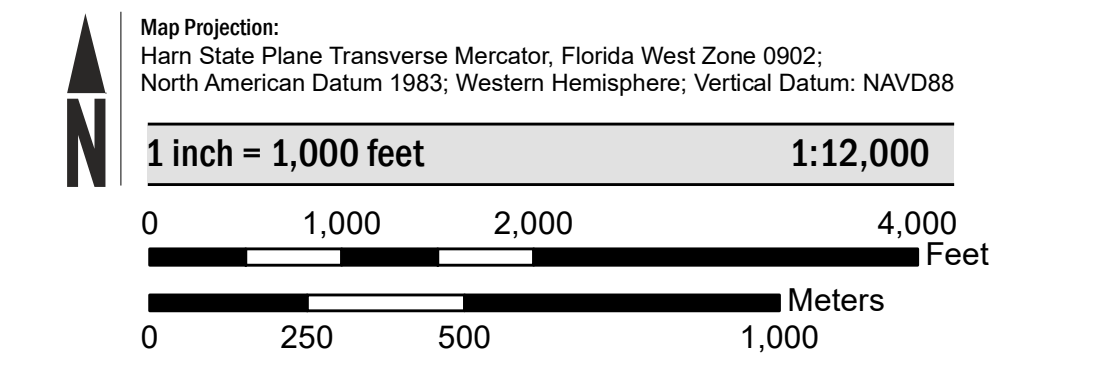
Watershed Boundary Locator

PREFIX	WATERSHED	PREFIX	WATERSHED
1	Blichton	7	North West Ocala
2	Cotton Plant 1	8	State Road 200
3	Cotton Plant 2	9	Withlacoochee
4	Cotton Plant 3	10	West Ocala
5	Hog Prairie	11	Florida Ridge
6	Martel	12	Marshall Swamp

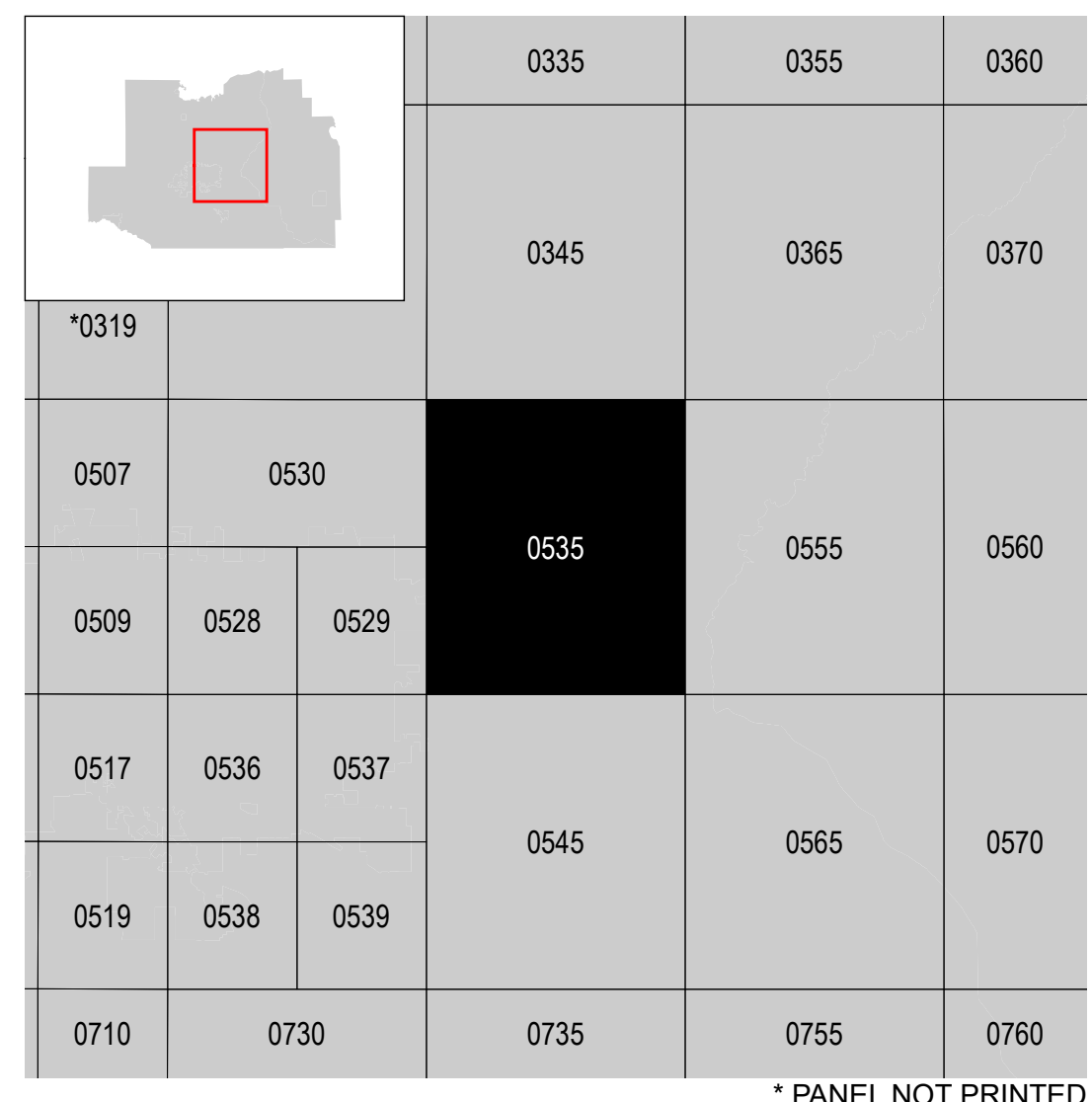
* Watershed prefixes were created to establish unique identifiers for nodes and associate them with their corresponding watersheds



SCALE



PANEL LOCATOR



* PANEL NOT PRINTED

NATIONAL FLOOD INSURANCE PROGRAM
FLOOD INSURANCE RATE MAP

MARION COUNTY,
 And Incorporated Areas

PANEL 535 OF 530

Panel Contains:

COMMUNITY	NUMBER	PANEL	SUFFIX
OCALA, CITY OF	120330	0535	E
MARION COUNTY	120160	0535	E

REVISED PRELIMINARY
06/08/2016

VERSION NUMBER
2.3.3.2

MAP NUMBER
12083C0535E

EFFECTIVE DATE