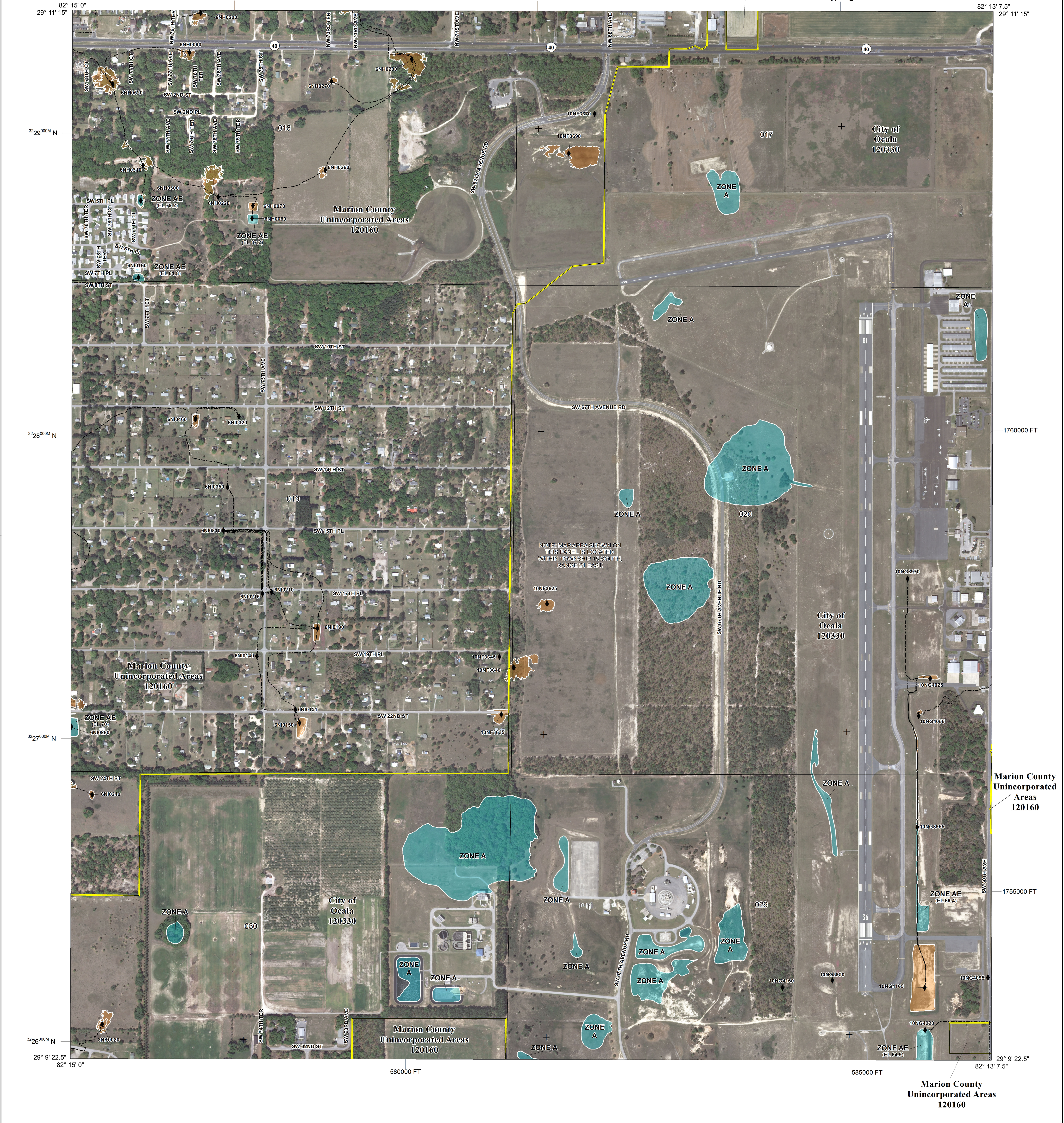


Marion County
Unincorporated Areas
120160



FLOOD HAZARD INFORMATION

SEE FIS REPORT FOR DETAILED LEGEND AND INDEX MAP FOR FIRM PANEL LAYOUT
THE INFORMATION DEPICTED ON THIS MAP AND SUPPORTING DOCUMENTATION ARE ALSO AVAILABLE IN DIGITAL FORMAT AT [HTTP://MSC.FEMA.GOV](http://msc.fema.gov)

	Without Base Flood Elevation (BFE) Zone A, V, A99
	With BFE or Depth Zone AE, AO, AH, VE, AR
	Regulatory Floodway
	0.2% Annual Chance Flood Hazard, Areas of 1% annual chance flood with average depth less than one foot or with drainage areas of less than one square mile Zone X
	Future Conditions 1% Annual Chance Flood Hazard Zone X
	Area with Reduced Flood Risk due to Levee See Notes Zone X
	NO SCREEN Areas of Minimal Flood Hazard Zone X
	Area of Undetermined Flood Hazard Zone D
	Channel, Culvert, or Storm Sewer Accredited or Provisionally Accredited Levee, Dike, or Floodwall
	Non-accredited Levee, Dike, or Floodwall
	Cross Sections with 1% Annual Chance Water Surface Elevation (BFE) 18.2 17.5
	Coastal Transect
	Coastal Transect Baseline
	Profile Baseline
	Hydrographic Feature
	Base Flood Elevation Line (BFE) 513
	Limit of Study
	Jurisdiction Boundary

NOTES TO USERS

For information and questions about this map, available products associated with this FIRM including historic versions of the FIRM, how to order products or the National Flood Insurance Program in general, please call the FEMA Map Information eXchange at 1-877-FEMA-MAP (1-877-336-2627) or visit the FEMA Map Service Center website at <http://msc.fema.gov>. Available products may include previously issued Letters of Map Change, a Flood Insurance Study Report, and/or digital versions of this map. Many of these products can be ordered or obtained directly from the website. Users may determine the current map date for each FIRM panel by visiting the FEMA Map Service Center website or by calling the FEMA Map Information eXchange.

Communities annexing land on adjacent FIRM panels must obtain a current copy of the adjacent panel as well as the current FIRM Index. These may be ordered directly from the Map Service Center at the number listed above.

For community and countywide map dates refer to the Flood Insurance Study report for this jurisdiction.

Base Map information shown on this FIRM was derived from multiple sources and was provided in digital format using source material at a scale of 1:24,000 or larger.

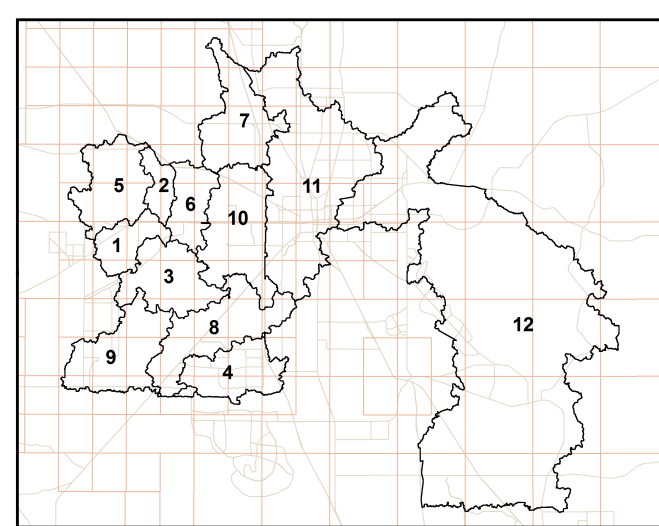
1NE0100 Junction - Points defining flow accumulation or hydraulic connectivity. The first character of the Junction name represents the specific watershed (as shown in the table below) in which the junction is located.

Hydraulic Connectivity - Flow pathway between junctions

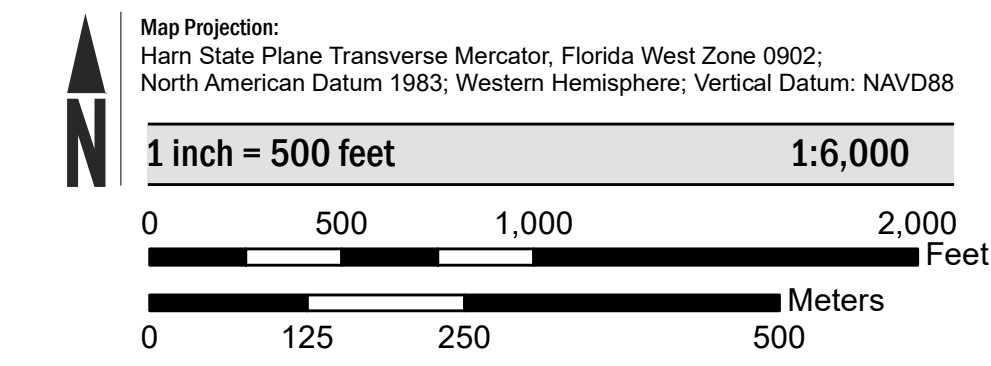
Watershed Boundary Locator

PREFIX	WATERSHED	PREFIX	WATERSHED
1	Blichton	7	North West Ocala
2	Cotton Plant 1	8	State Road 200
3	Cotton Plant 2	9	Withlacoochee
4	Cotton Plant 3	10	West Ocala
5	Hog Prairie	11	Florida Ridge
6	Martel	12	Marshall Swamp

* Watershed prefixes were created to establish unique identifiers for nodes and associate them with their corresponding watersheds



SCALE



PANEL LOCATOR

		0501	0502	0506
		0503	0504	0508
0491	0492	0511	0512	0516
0493	0494	0513	0514	0518
0681	0682	0701	0702	0706

* PANEL NOT PRINTED

FEMA
National Flood Insurance Program

NATIONAL FLOOD INSURANCE PROGRAM
FLOOD INSURANCE RATE MAP

MARION COUNTY,
And Incorporated Areas

PANEL 511 OF 530

Panel Contains:

COMMUNITY	NUMBER	PANEL	SUFFIX
OCALA, CITY OF	120330	0511	E
MARION COUNTY	120160	0511	E

REVISED PRELIMINARY
06/08/2016

VERSION NUMBER 2.3.3.2
MAP NUMBER 12083C0511E
EFFECTIVE DATE