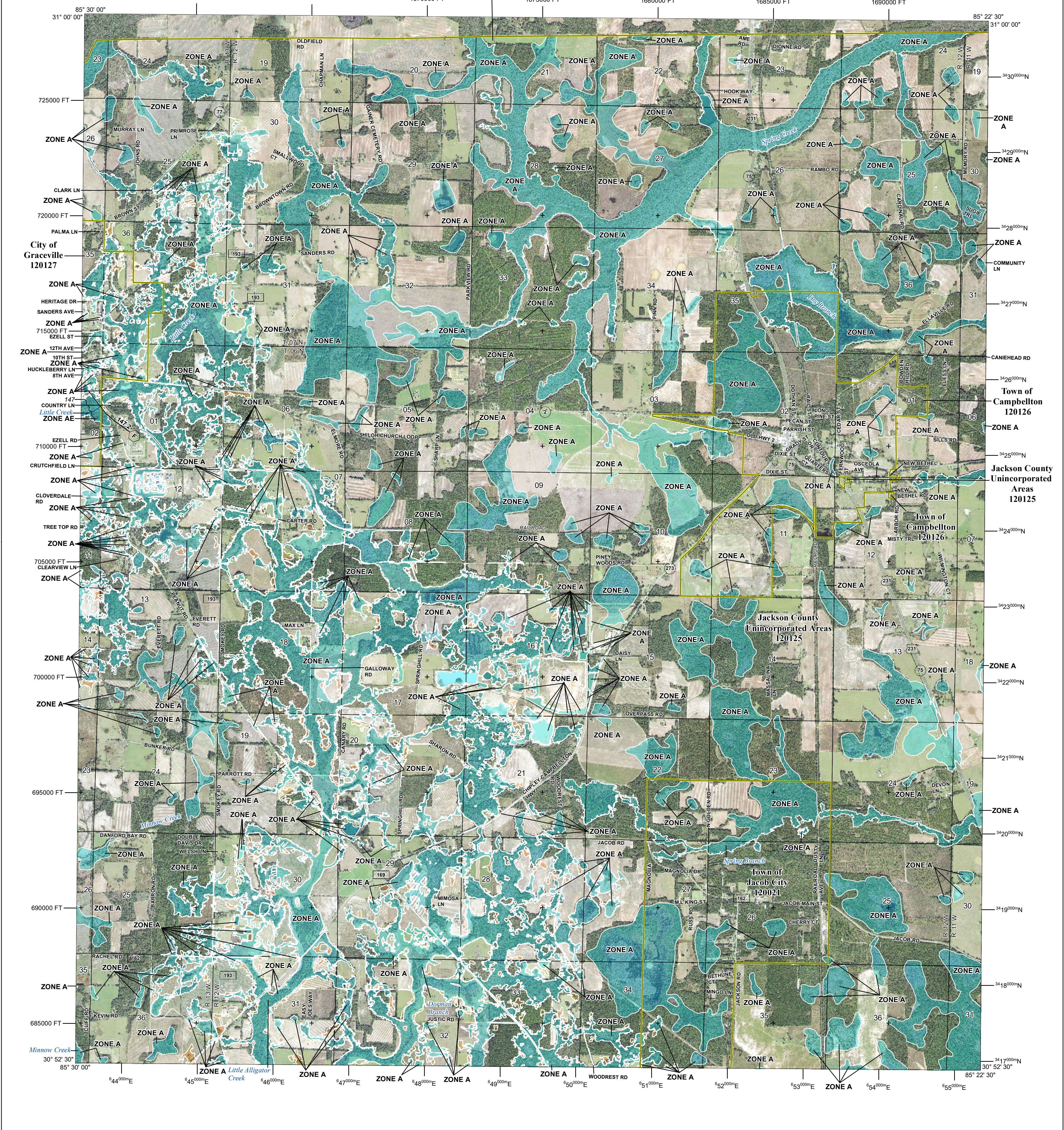
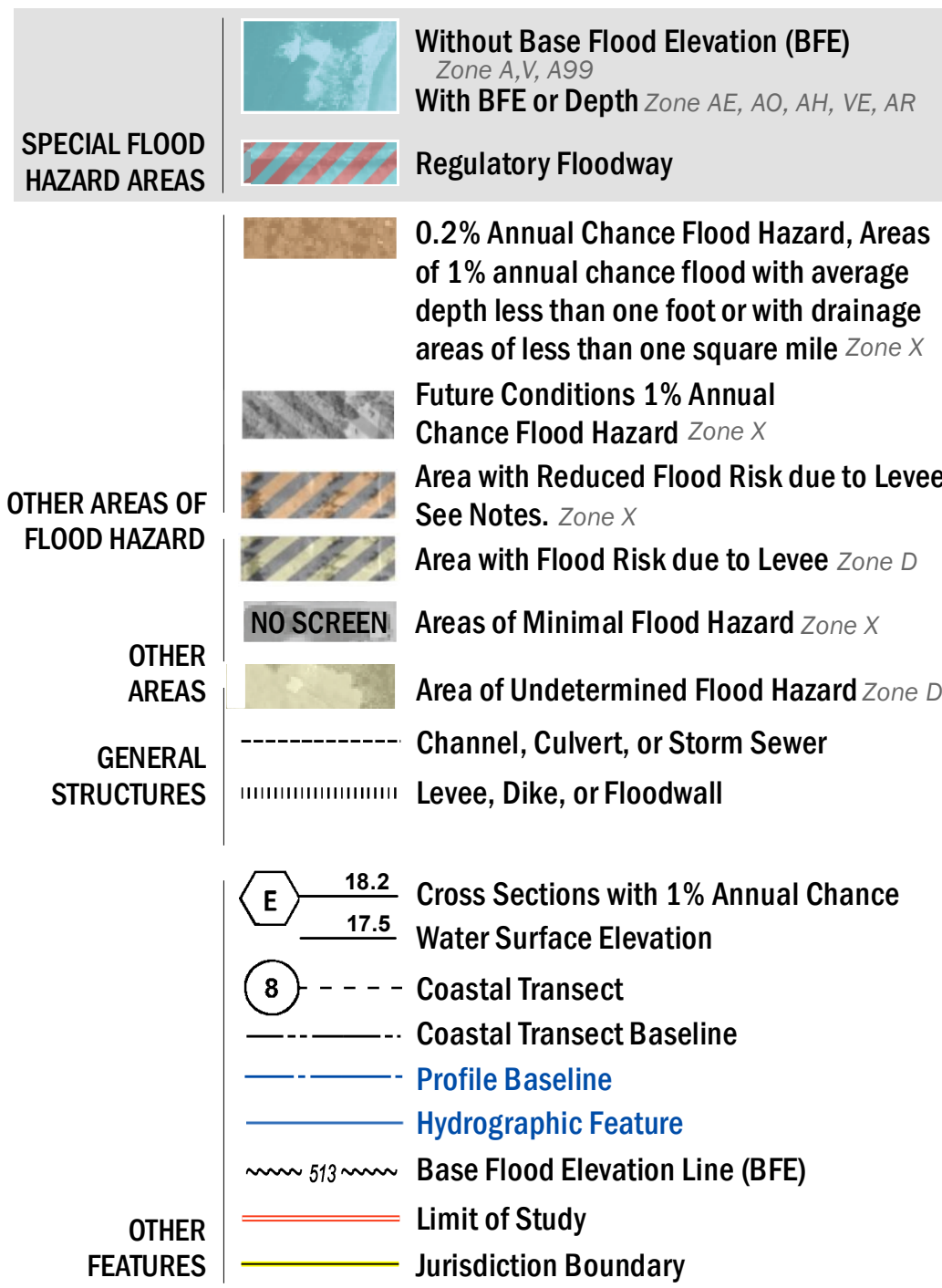


Jackson County
Unincorporated Areas
120125



FLOOD HAZARD INFORMATION

SEE FIS REPORT FOR DETAILED LEGEND AND INDEX MAP FOR FIRM PANEL LAYOUT
THE INFORMATION DEPICTED ON THIS MAP AND SUPPORTING DOCUMENTATION ARE ALSO AVAILABLE IN DIGITAL FORMAT AT [HTTPS://MSC.FEMA.GOV](https://MSC.FEMA.GOV)



NOTES TO USERS

For information and questions about this Flood Insurance Rate Map (FIRM), available products associated with this FIRM, including historic versions, the current map date for each FIRM panel, how to order products, or the National Flood Insurance Program (NFIP) in general, please call the FEMA Mapping and Insurance eXchange at 1-877-FEMA-MAP (1-877-336-2627) or visit the FEMA Flood Map Service Center website at <https://msc.fema.gov>. Available products may include previously issued Letters of Map Change, a Flood Insurance Study Report, and/or digital versions of this map. Many of these products can be ordered or obtained directly from the website.

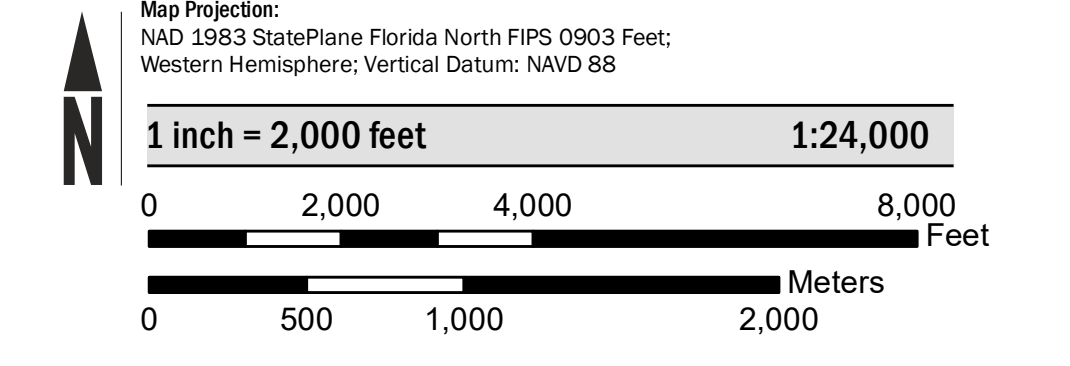
Communities annexing land on adjacent FIRM panels must obtain a current copy of the adjacent panel as well as the current FIRM Index. These may be ordered directly from the Flood Map Service Center at the number listed above.

For community and countywide map dates refer to the Flood Insurance Study Report for this jurisdiction.

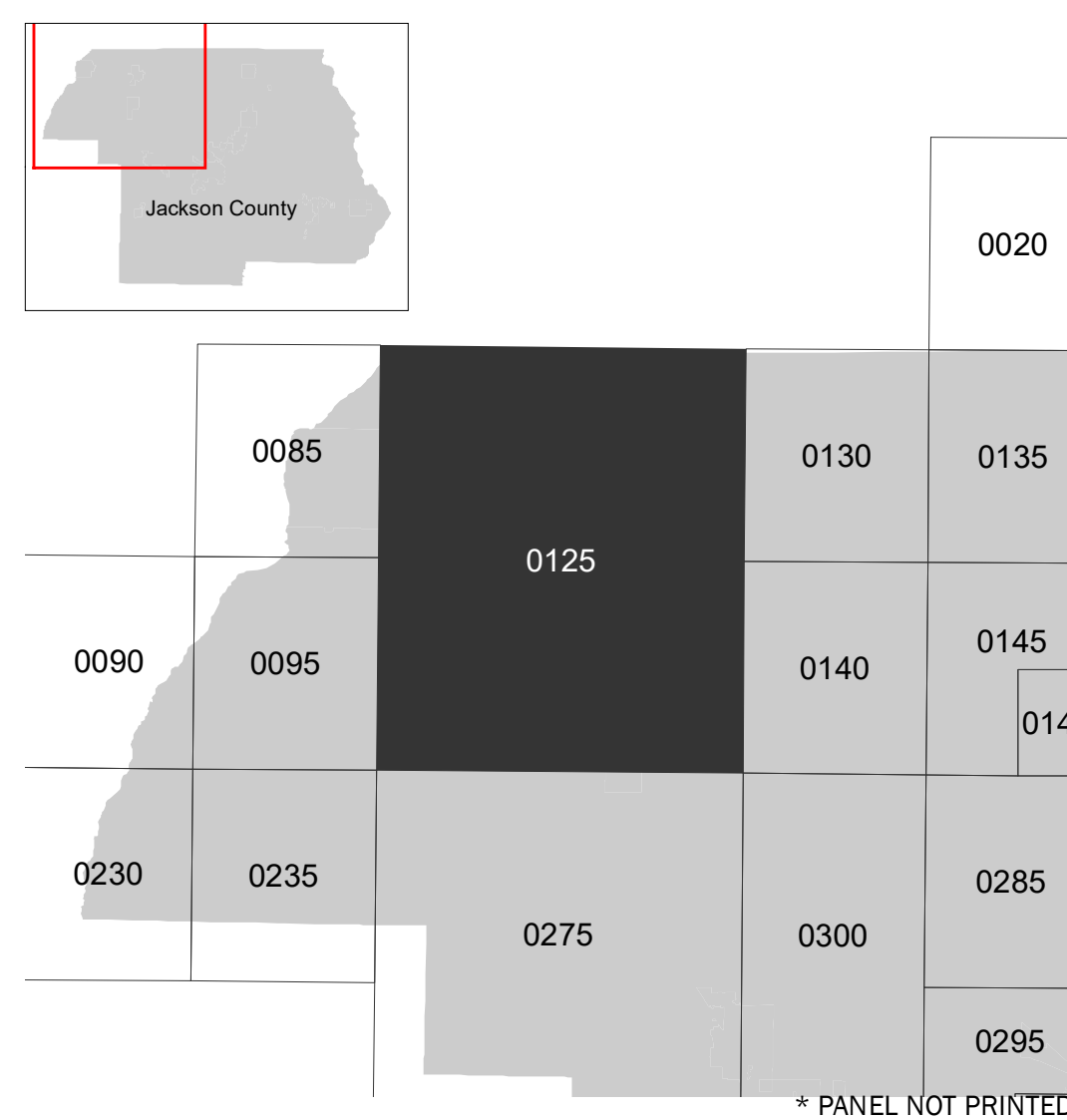
To determine if flood insurance is available in this community, contact your insurance agent or call the National Flood Insurance Program at 1-800-638-6620.

Base map information shown on this FIRM was provided in digital format by the Florida Department of Transportation (FDOT). This information was derived from digital orthophotography at a 1 meter resolution from photography dated 2016.

SCALE



PANEL LOCATOR



NATIONAL FLOOD INSURANCE PROGRAM
FLOOD INSURANCE RATE MAP

JACKSON COUNTY, FLORIDA
 And Incorporated Areas

PANEL 125 OF 635

COMMUNITY	NUMBER	PANEL	SUFFIX
CAMPBELLTON, TOWN OF	120126	0125	E
GRACEVILLE, CITY OF	120127	0125	E
JACKSON COUNTY	120125	0125	E
JACOB CITY, TOWN OF	120021	0125	E

Panel Contains:

PRELIMINARY
 5/22/2024

VERSION NUMBER
 2.6.4.6

MAP NUMBER
 12063C0125E

MAP REVISED