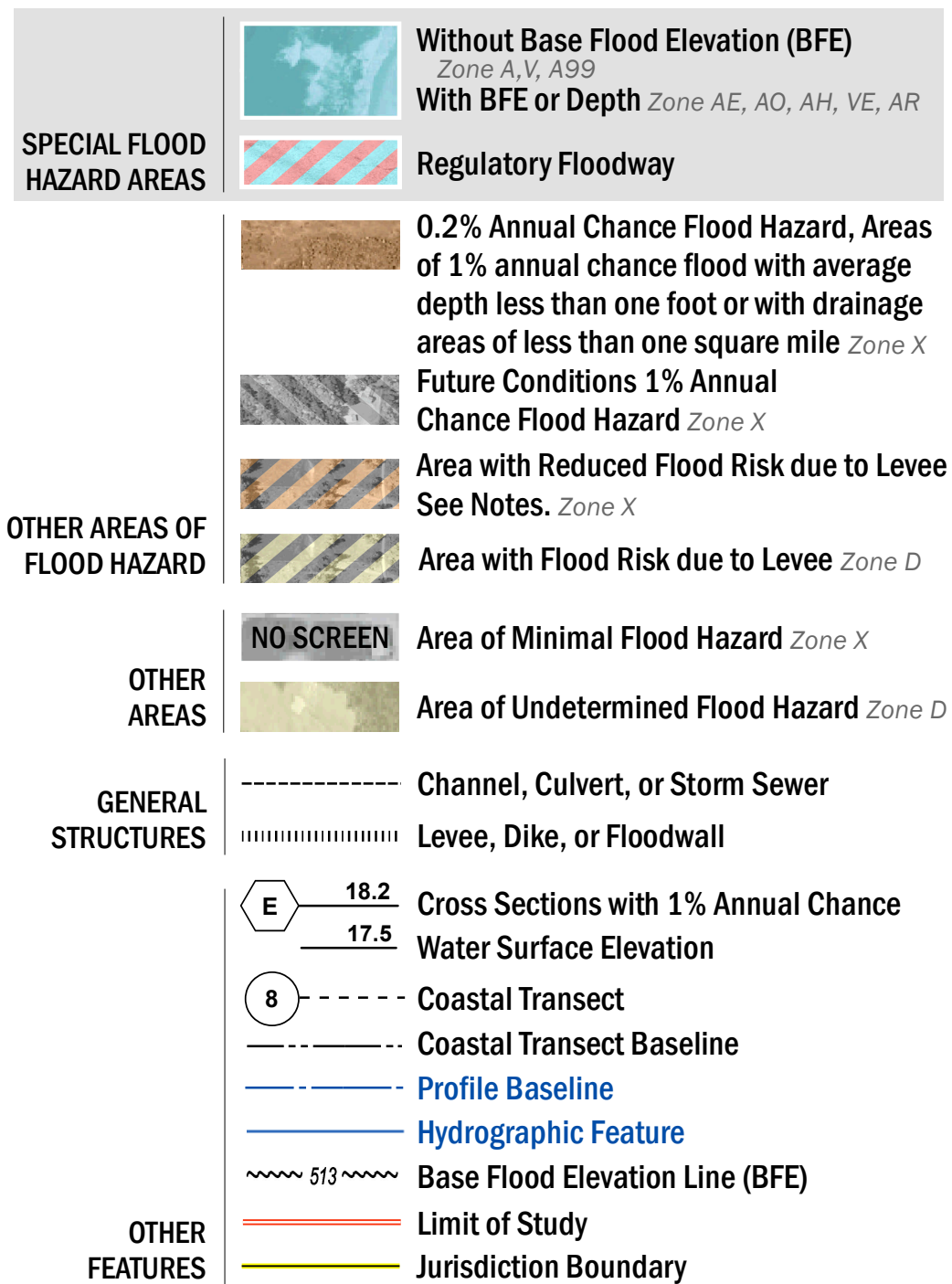


**FLOOD HAZARD INFORMATION**

SEE FIS REPORT FOR DETAILED LEGEND AND INDEX MAP FOR FIRM PANEL LAYOUT  
**THE INFORMATION DEPICTED ON THIS MAP AND SUPPORTING DOCUMENTATION ARE ALSO AVAILABLE IN DIGITAL FORMAT AT [HTTP://MSC.FEMA.GOV](http://MSC.FEMA.GOV)**



**NOTES TO USERS**

For information and questions about this Flood Insurance Rate Map (FIRM), available products associated with this FIRM, including historic versions, the current date for each FIRM panel, how to order products or the National Flood Insurance Program (NFIP) in general, please call the FEMA Map Information eXchange at 1-877-FEMA-MAP (1-877-336-2627) or visit the FEMA Map Service Center website at <http://msc.fema.gov>. Available products may include previously issued Letters of Map Change, a Flood Insurance Study Report, and/or digital versions of this map. Many of these products can be ordered or obtained directly from the website.

Communities annexing land on adjacent FIRM panels must obtain a current copy of the adjacent panel as well as the current FIRM Index. These may be ordered directly from the Map Service Center at the number listed above.

For community and countywide map dates refer to the Flood Insurance Study report for this jurisdiction.

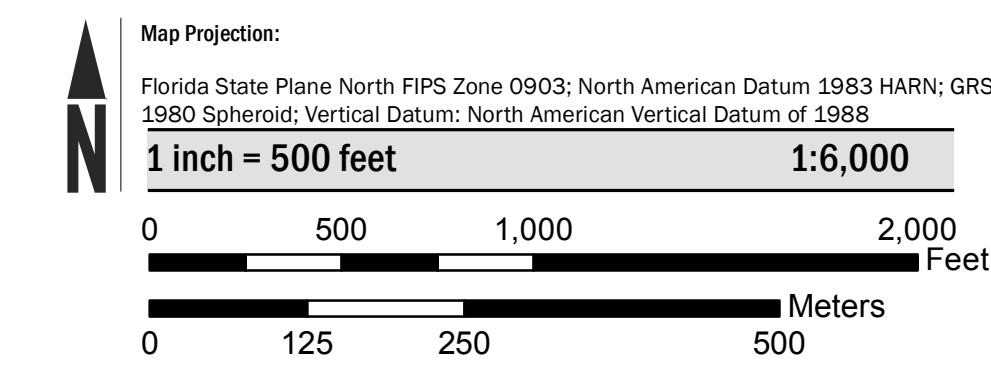
To determine if flood insurance is available in this community, contact your insurance agent or call the National Flood Insurance Program at 1-800-638-6620.

Base map information shown on this FIRM was provided in digital format by the Florida Department of Transportation (FDOT). This information was derived from digital orthophotography at a 0.5-foot resolution from photography dated 2016.

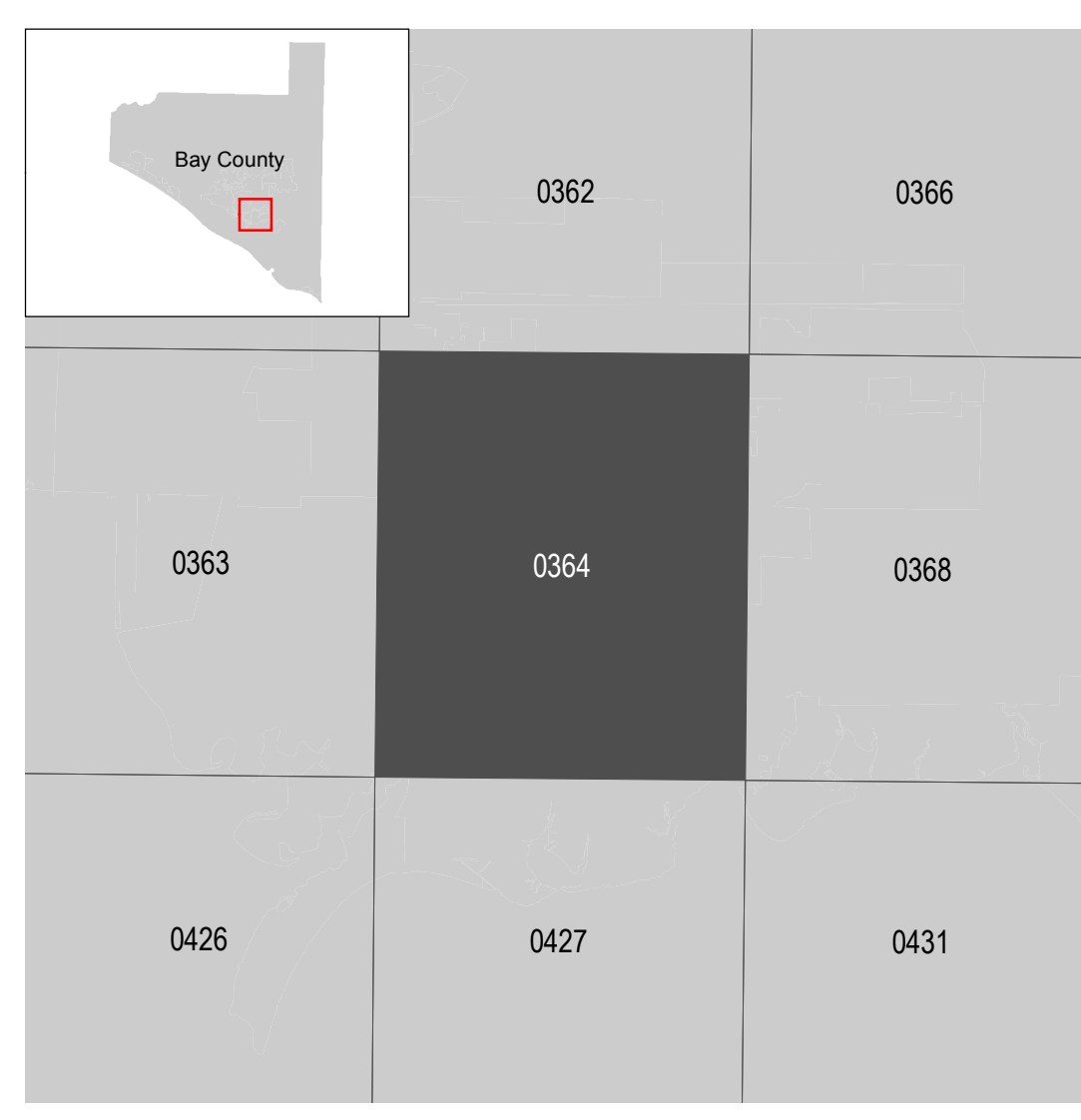
**LIMIT OF MODERATE WAVE ACTION:** Zone AE has been divided by a Limit of Moderate Wave Action (LMWA). The LMWA represents the approximate landward limit of the 1.5-foot breaking waves. The effects of wave hazards between the Zone VE and the LMWA (or between the shoreline and the LMWA for areas where Zone VE is not identified) will be similar to, but less severe than, those in the Zone VE.

Limit of Moderate Wave Action (LMWA)

**SCALE**



**PANEL LOCATOR**



**FEMA**  
**National Flood Insurance Program**

**NATIONAL FLOOD INSURANCE PROGRAM**  
**FLOOD INSURANCE RATE MAP**  
**BAY COUNTY, FLORIDA**  
 and Incorporated Areas

PANEL 364 OF 517

Panel Contains:

COMMUNITY	NUMBER	PANEL	SUFFIX
BAY COUNTY	120004	0364	J
CALLAWAY, CITY OF	120005	0364	J
PARKER, CITY OF	120011	0364	J

**REVISED PRELIMINARY**  
**4/15/2022**

VERSION NUMBER  
**2.5.3.6**

MAP NUMBER  
**12005C0364J**

MAP REVISED