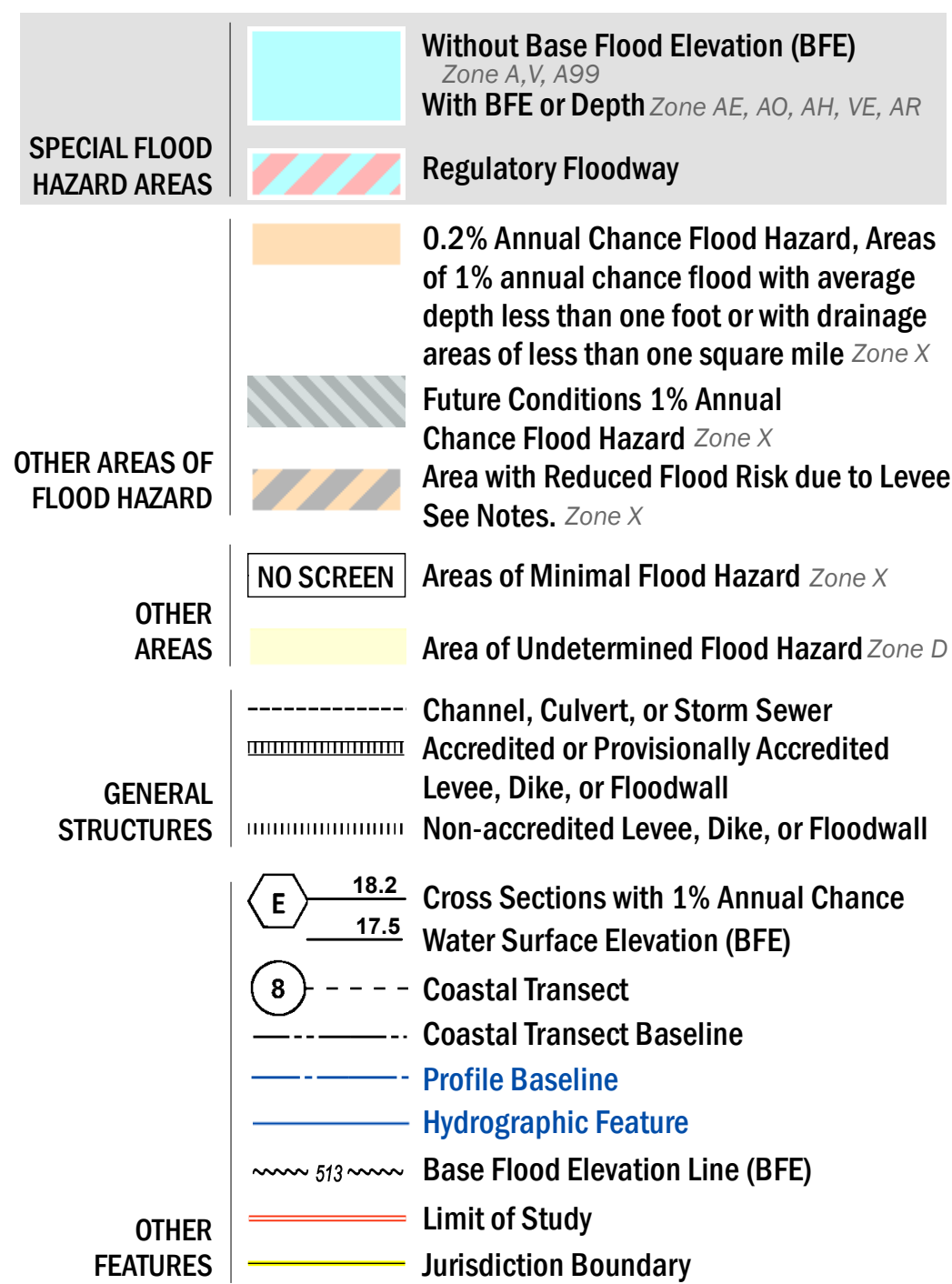


FLOOD HAZARD INFORMATION

SEE FIS REPORT FOR ZONE DESCRIPTIONS AND INDEX MAP
 THE INFORMATION DEPICTED ON THIS MAP AND SUPPORTING
 DOCUMENTATION ARE ALSO AVAILABLE IN DIGITAL FORMAT AT
[HTTP://MSC.FEMA.GOV](http://MSC.FEMA.GOV)



NOTES TO USERS

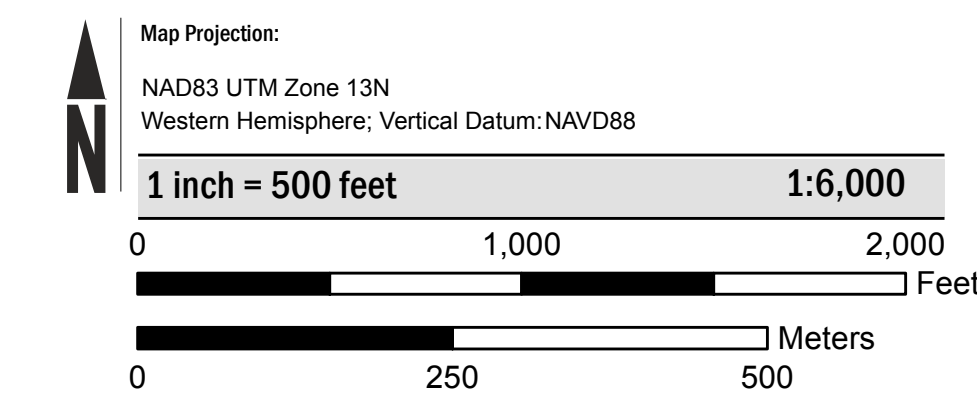
For information and questions about this map, available products associated with this FIRM including historic versions of this FIRM, how to order products or the National Flood Insurance Program in general, please call the FEMA Map Information eXchange at 1-877-FEMA-MAP (1-877-336-2627) or visit the FEMA Map Service Center website at <http://msc.fema.gov>. Available products may include previously issued Letters of Map Change, a Flood Insurance Study Report, and/or digital versions of this map. Many of these products can be ordered or obtained directly from the website. Users may determine the current map date for each FIRM panel by visiting the FEMA Map Service Center website or by calling the FEMA Map Information eXchange.

Communities annexing land on adjacent FIRM panels must obtain a current copy of the adjacent panel as well as the current FIRM Index. These may be ordered directly from the Map Service Center at the number listed above.

For community and countywide map dates refer to the Flood Insurance Study report for this jurisdiction. To determine if flood insurance is available in the community, contact your insurance agent or call the National Flood Insurance Program at 1-800-638-6620.

Base map information shown on this FIRM was provided in digital format by the City and County of Denver, Department of Public Works Geographic Information Systems (GIS) Division dated 2015.

SCALE



PANEL LOCATOR



* PANEL NOT PRINTED

NATIONAL FLOOD INSURANCE PROGRAM
 FLOOD INSURANCE RATE MAP

CITY AND COUNTY OF DENVER, COLORADO

PANEL 201 OF 300

Panel Contains:

COMMUNITY	NUMBER	PANEL	SUFFIX
DENVER, CITY AND COUNTY OF	080046	0201	H

PRELIMINARY
 JUNE 30, 2016

VERSION NUMBER
 2.3.3.2

MAP NUMBER
 0800460201H

MAP REVISED