

FLOOD HAZARD INFORMATION

SEE FIS REPORT FOR ZONE DESCRIPTIONS AND INDEX MAP
THE INFORMATION DEPICTED ON THIS MAP AND SUPPORTING DOCUMENTATION ARE ALSO AVAILABLE IN DIGITAL FORMAT AT [HTTP://MSC.FEMA.GOV](http://MSC.FEMA.GOV)

	Without Base Flood Elevation (BFE) Zone A, V, A99 With BFE or Depth Zone AE, AO, AH, VE, AR
	Regulatory Floodway
	0.2% Annual Chance Flood Hazard, Areas of 1% annual chance flood with average depth less than one foot or with drainage areas of less than one square mile Zone X
	Future Conditions 1% Annual Chance Flood Hazard Zone X
	Area with Reduced Flood Risk due to Levee See Notes. Zone X
	Areas Determined to be Outside the 0.2% Annual Chance Floodplain Zone X
	Area of Undetermined Flood Hazard Zone D
	Channel, Culvert, or Storm Sewer
	Accredited or Provisionally Accredited Levee, Dike, or Floodwall
	Non-accredited Levee, Dike, or Floodwall
	Cross Sections with 1% Annual Chance Water Surface Elevation (BFE)
	Coastal Transect
	Coastal Transect Baseline
	Profile Baseline
	Hydrographic Feature
	Base Flood Elevation Line (BFE)
	Limit of Study
	Jurisdiction Boundary

NOTES TO USERS

For information and questions about this map, available products associated with this FIRM including historic versions of this FIRM, how to order products, or the National Flood Insurance Program in general, please call the FEMA Map Information eXchange at 1-877-FEMA-MAP (1-877-336-2627) or visit the FEMA Map Service Center website at <http://msc.fema.gov>. Available products may include previously issued Letters of Map Change, a Flood Insurance Study Report, and/or digital versions of this map. Many of these products can be ordered or obtained directly from the website. Users may determine the current map date for each FIRM panel by visiting the FEMA Map Service Center website or by calling the FEMA Map Information eXchange.

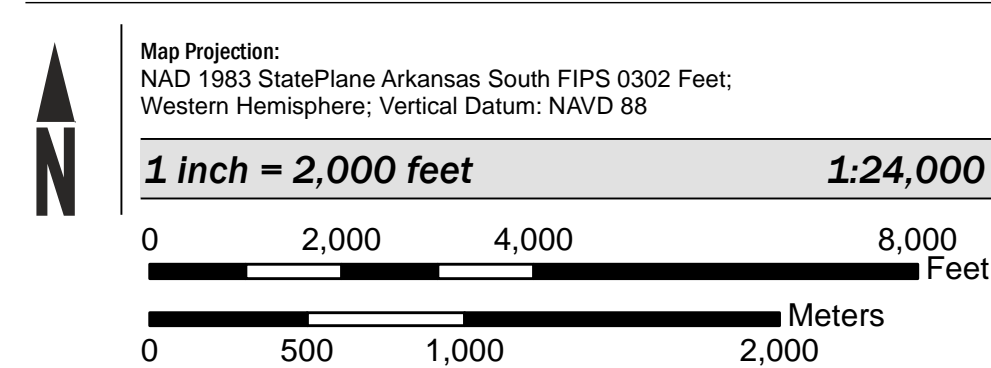
Communities annexing land on adjacent FIRM panels must obtain a current copy of the adjacent panel as well as the current FIRM Index. These may be ordered directly from the Map Service Center at the number listed above.

For community and countywide map dates, refer to the Flood Insurance Study report for the jurisdiction.

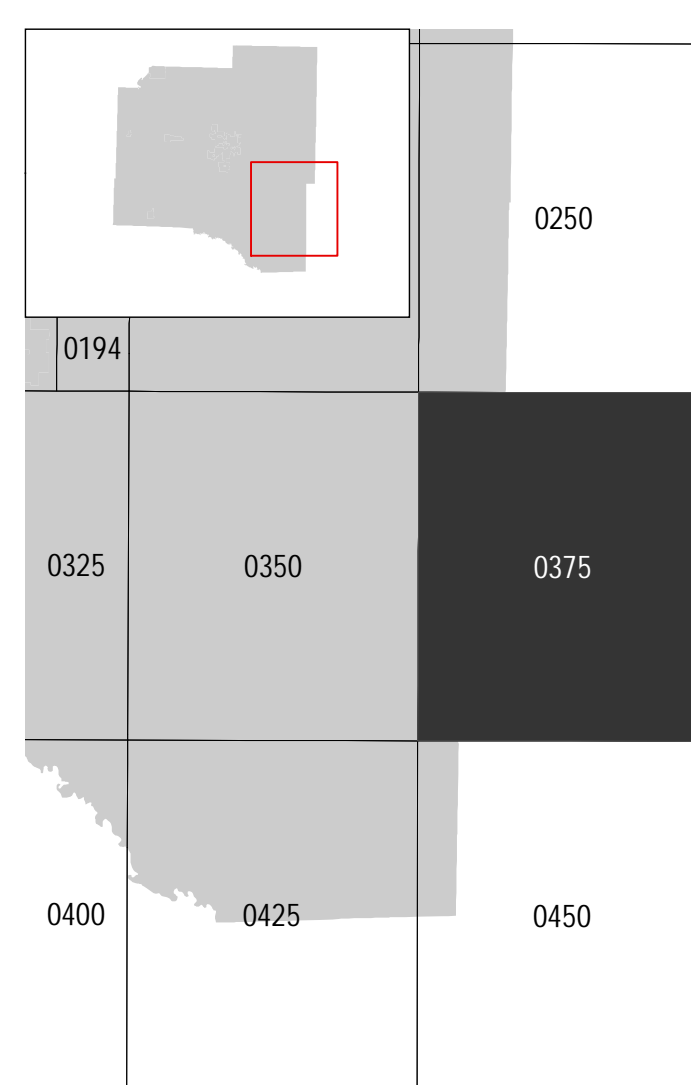
To determine if flood insurance is available in the community, contact your insurance agent or call the National Flood Insurance Program at 1-800-638-6620.

Base map information shown on the FIRM was provided in digital format by USDA Aerial Photography Field Office, National Agricultural Inventory Project (NAIP) dated 2013, produced at a scale of 1:12,000.

SCALE



PANEL LOCATOR



**NATIONAL FLOOD INSURANCE PROGRAM
 FLOOD INSURANCE RATE MAP**

GRANT COUNTY, ARKANSAS
 and Incorporated Areas
 PANEL 375 of 450



Panel Contains:

COMMUNITY	NUMBER	PANEL	SUFFIX
Grant County	050434	0375	C

**PRELIMINARY
 9/24/2015**

VERSION NUMBER
2.3.3.2
 MAP NUMBER
05053C0375C
 EFFECTIVE DATE