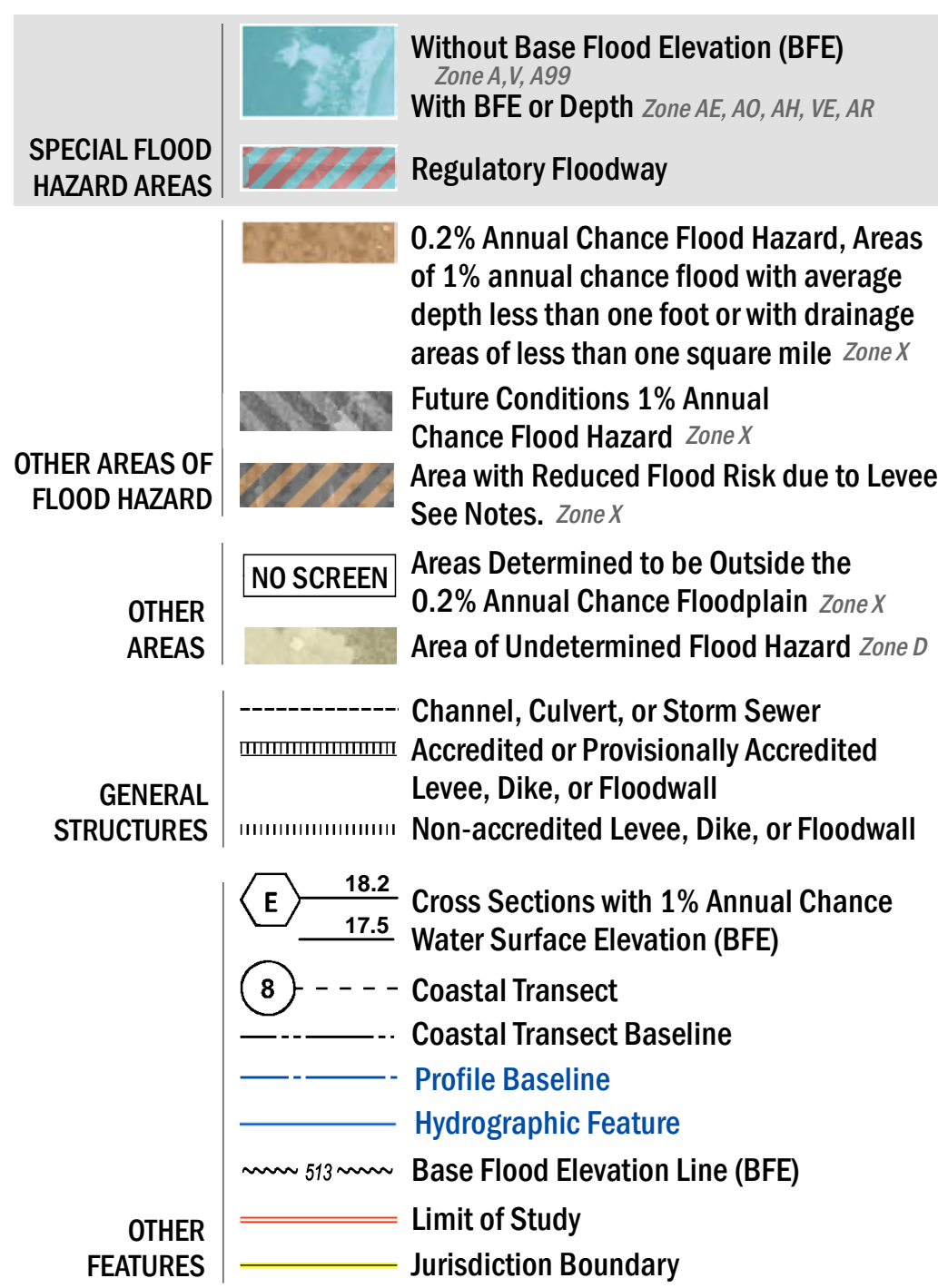


FLOOD HAZARD INFORMATION

SEE FIS REPORT FOR ZONE DESCRIPTIONS AND INDEX MAP
THE INFORMATION DEPICTED ON THIS MAP AND SUPPORTING DOCUMENTATION ARE ALSO AVAILABLE IN DIGITAL FORMAT AT [HTTP://MSC.FEMA.GOV](http://msc.fema.gov)



NOTES TO USERS

For information and questions about this map, available products associated with this FIRM including historic versions of this FIRM, how to order products, or the National Flood Insurance Program in general, please call the FEMA Map Information eXchange at 1-877-FEMA-MAP (1-877-336-2627) or visit the FEMA Map Service Center website at <http://msc.fema.gov>. Available products may include previously issued Letters of Map Change, a Flood Insurance Study Report, and/or digital versions of this map. Many of these products can be ordered or obtained directly from the website. Users may determine the current map date for each FIRM panel by visiting the FEMA Map Service Center website or by calling the FEMA Map Information eXchange.

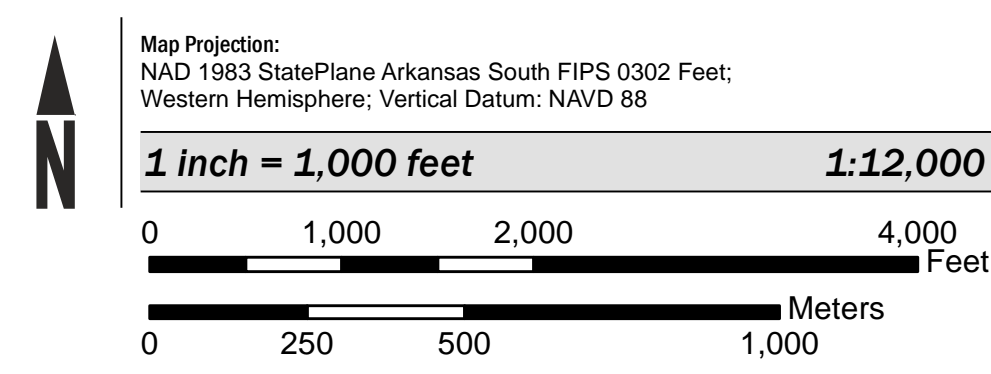
Communities annexing land on adjacent FIRM panels must obtain a current copy of the adjacent panel as well as the current FIRM Index. These may be ordered directly from the Map Service Center at the number listed above.

For community and countywide map dates, refer to the Flood Insurance Study report for the jurisdiction.

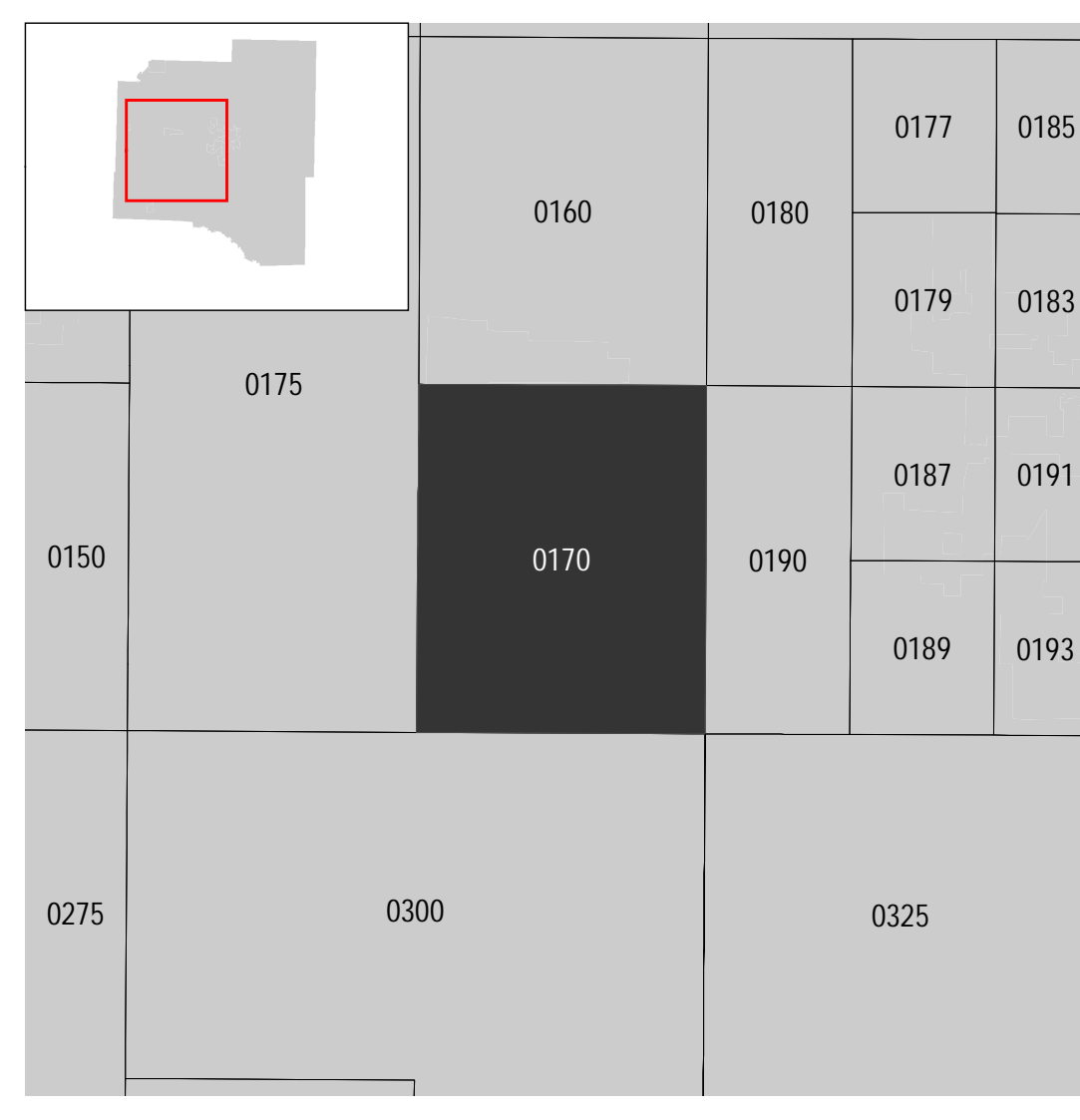
To determine if flood insurance is available in the community, contact your insurance agent or call the National Flood Insurance Program at 1-800-638-6620.

Base map information shown on the FIRM was provided in digital format by USDA Aerial Photography Field Office, National Agricultural Inventory Project (NAIP) dated 2013, produced at a scale of 1:12,000.

SCALE



PANEL LOCATOR



**NATIONAL FLOOD INSURANCE PROGRAM
 FLOOD INSURANCE RATE MAP**

GRANT COUNTY, ARKANSAS
 and Incorporated Areas
 PANEL 170 of 450

Panel Contains:
 COMMUNITY NUMBER PANEL SUFFIX
 Grant County 050434 0170 C
 Prattsville, Town of 050279 0170 C



**PRELIMINARY
 9/24/2015**

VERSION NUMBER 2.3.3.2
 MAP NUMBER 05053C0170C
 EFFECTIVE DATE