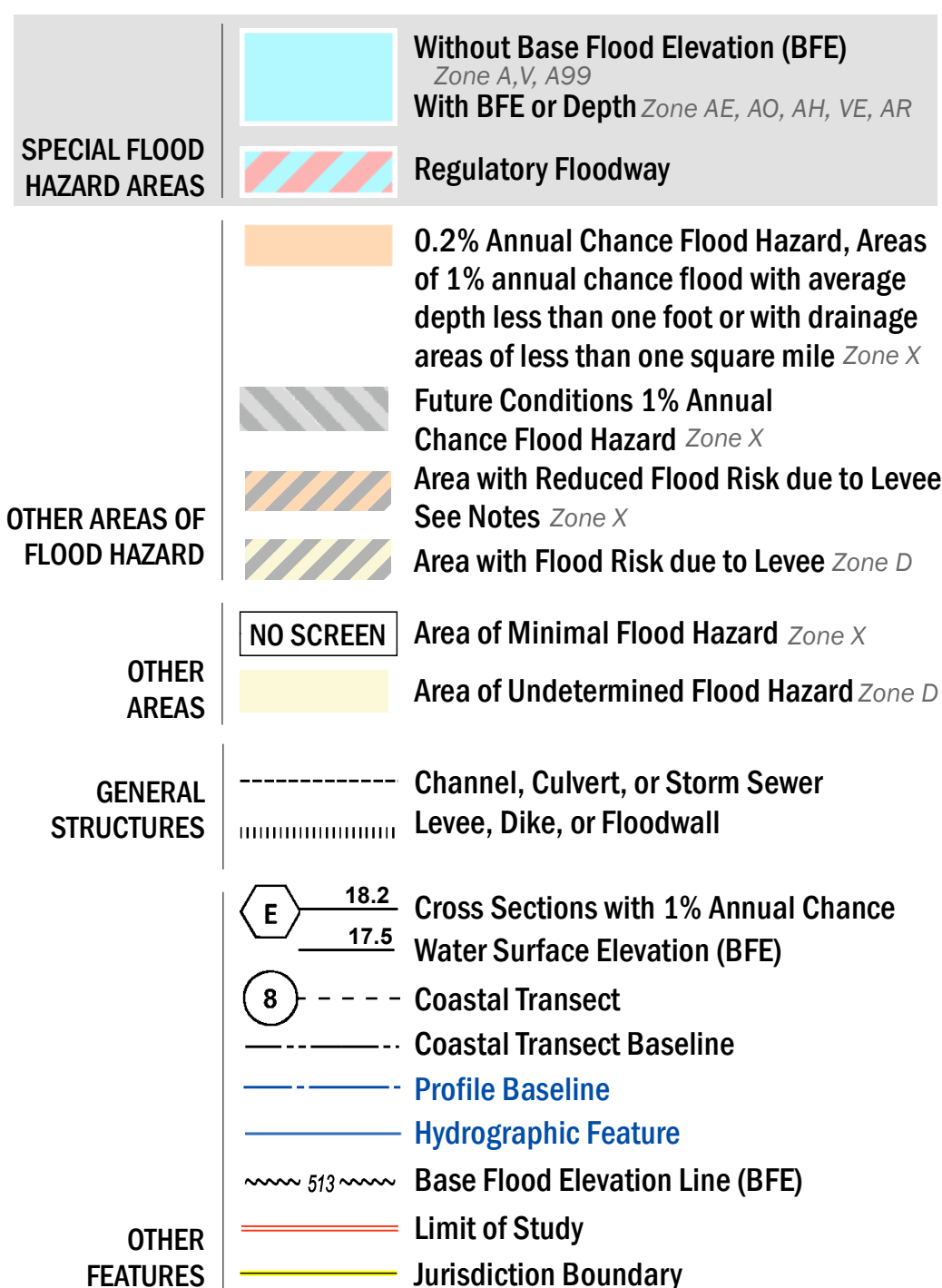


FLOOD HAZARD INFORMATION

SEE FIS REPORT FOR DETAILED LEGEND AND INDEX MAP FOR FIRM PANEL LAYOUT
THE INFORMATION DEPICTED ON THIS MAP AND SUPPORTING DOCUMENTATION ARE ALSO AVAILABLE IN DIGITAL FORMAT AT [HTTPS://MSC.FEMA.GOV](https://MSC.FEMA.GOV)



NOTES TO USERS

For information and questions about this Flood Insurance Rate Map (FIRM), available products associated with this FIRM, including historic versions of this FIRM, the current map date for each FIRM panel, how to order products, or the National Flood Insurance Program in general, please call the FEMA Map Information eXchange at 1-877-FEMA-MAP (1-877-336-2627) or visit the FEMA Map Service Center website at <http://msc.fema.gov>. Available products may include previously issued Letters of Map Change, a Flood Insurance Study Report, and/or digital versions of this map. Many of these products can be ordered or obtained directly from the website.

Communities annexing land on adjacent FIRM panels must obtain a current copy of the adjacent panel as well as the current FIRM index. These may be ordered directly from the Map Service Center at the number listed above.

For community and countywide map dates refer to the Flood Insurance Study report for this jurisdiction.

To determine if flood insurance is available in this community, contact your insurance agent or call the National Flood Insurance Program at 1-800-638-6620.

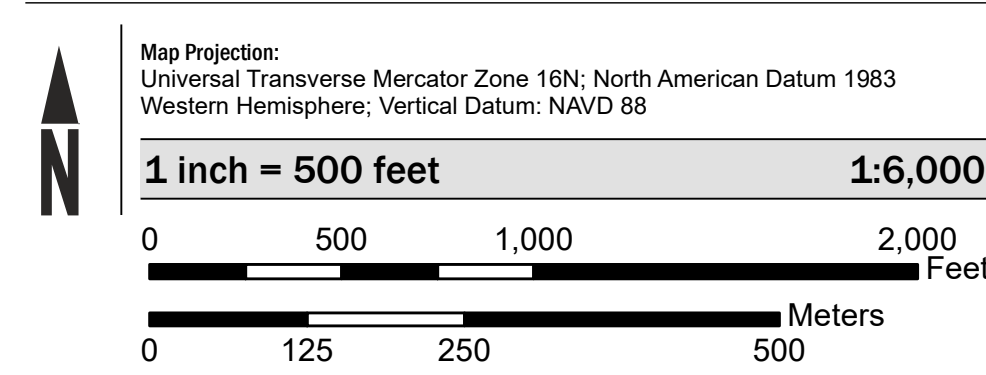
Base map information shown on this FIRM was derived from multiple sources, including the U.S. Bureau of the Census, U.S. Geological Survey and FEMA's Map Service Center.



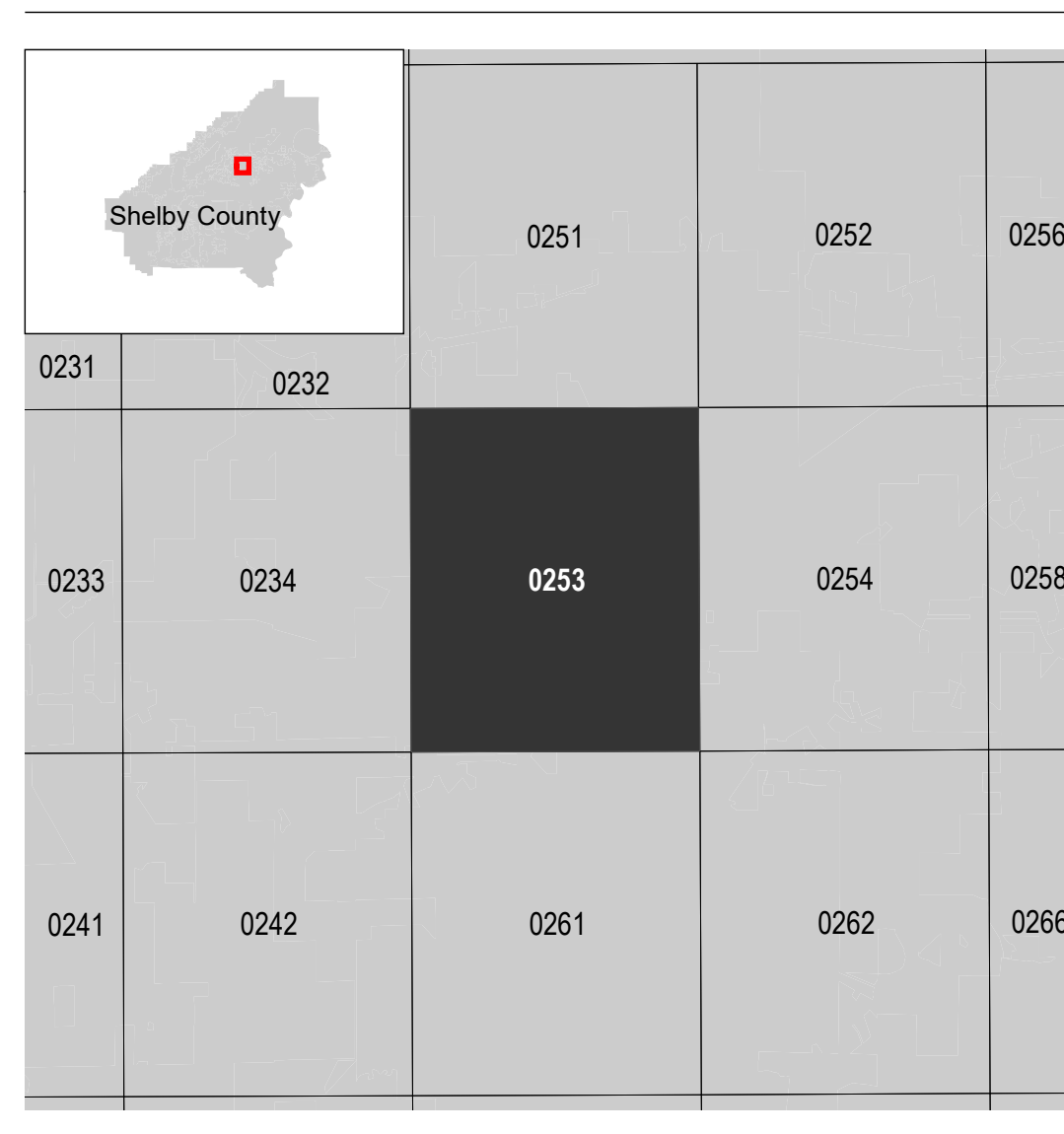
In cooperation with the Federal Emergency Management Agency (FEMA) and local communities in Alabama, this Flood Insurance Rate Map (FIRM) was developed by the Alabama Office of Water Resources in a digital statewide format to assist communities in their efforts to minimize the loss of property and life through effectively managing development in flood-prone areas. The State of Alabama has implemented a long term approach to floodplain management to reduce the impacts of flooding. This is demonstrated by the State's commitment to mapping floodplain areas at the local level. As part of this effort, the Alabama Office of Water Resources is working closely with FEMA as a Cooperating Technical Partner to produce and maintain this digital FIRM.

Please visit www.adeca.alabama.gov/floods for more information.

SCALE



PANEL LOCATOR



NATIONAL FLOOD INSURANCE PROGRAM

FLOOD INSURANCE RATE MAP

SHELBY COUNTY, ALABAMA
 and Incorporated Areas



PANEL 253 of 580

Panel Contains:

COMMUNITY	NUMBER	PANEL	SUFFIX
CHELSEA, CITY OF	010432	0253	F
SHELBY COUNTY	010191	0253	F

PRELIMINARY
5/8/2020

VERSION NUMBER 2.5.3.5

MAP NUMBER 01117C0253F
 MAP REVISED