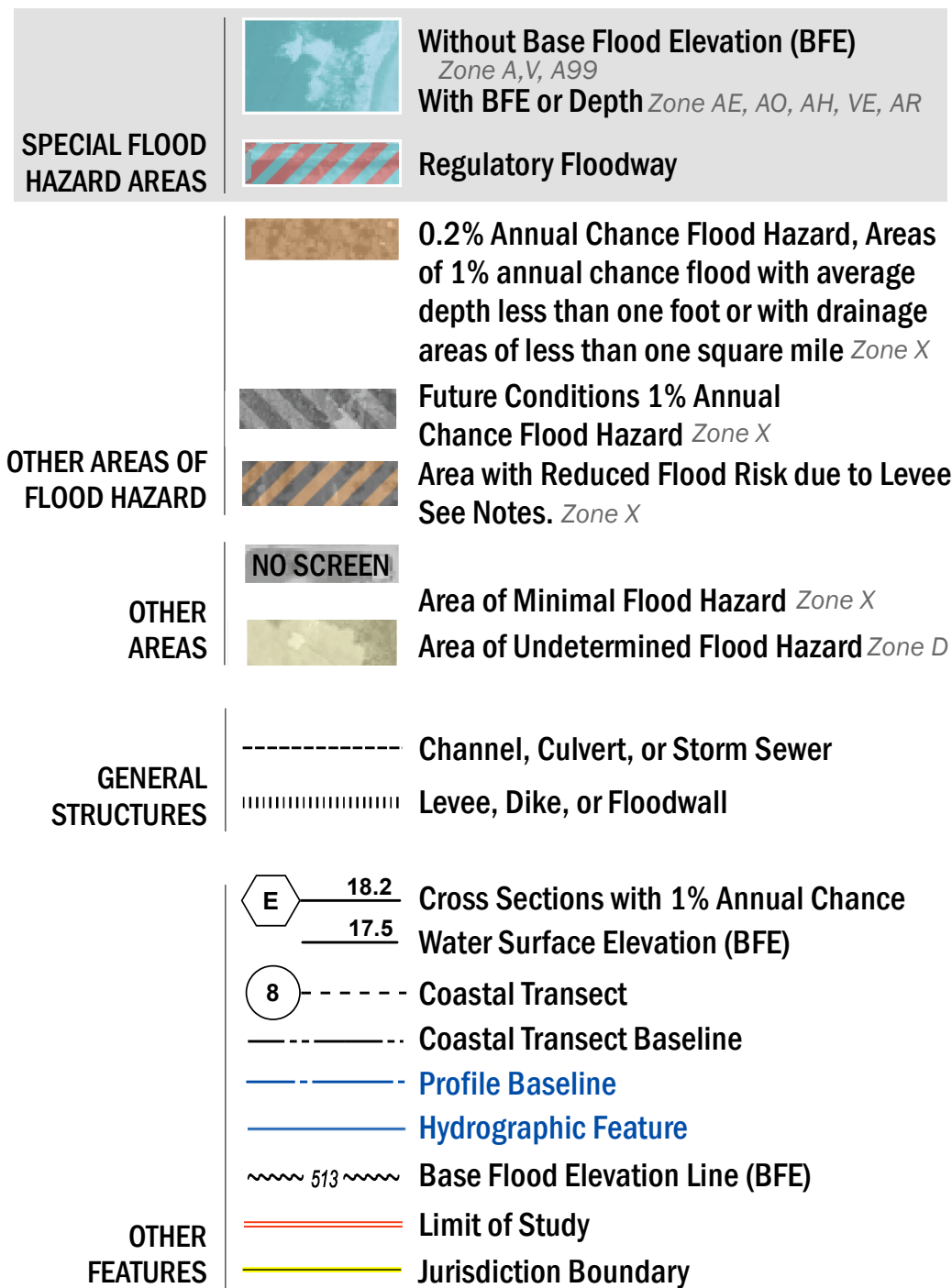


FLOOD HAZARD INFORMATION

SEE FIS REPORT FOR ZONE DESCRIPTIONS AND INDEX MAP FOR FIRM PANEL LAYOUT
THE INFORMATION DEPICTED ON THIS MAP AND SUPPORTING DOCUMENTATION ARE ALSO AVAILABLE IN DIGITAL FORMAT AT [HTTPS://MSC.FEMA.GOV](https://MSC.FEMA.GOV)



NOTES TO USERS

For information and questions about this Flood Insurance Rate Map (FIRM), available products associated with this FIRM, including historic versions of this FIRM, the current map date for each FIRM panel, how to order products, or the National Flood Insurance Program in general, please call the FEMA Mapping and Insurance exchange at 1-877-FEMA-MAP (1-877-336-2627) or visit the FEMA Map Service Center website at <https://msc.fema.gov>. Available products may include previously issued Letters of Map Change, a Flood Insurance Study Report, and/or digital versions of this map. Many of these products can be ordered or obtained directly from the website.

Communities annexing land on adjacent FIRM panels must obtain a current copy of the adjacent panel as well as the current FIRM Index. These may be ordered directly from the Map Service Center at the number listed above.

For community and countywide map dates refer to the Flood Insurance Study report for this jurisdiction.

To determine if flood insurance is available in this community, contact your insurance agent or call the National Flood Insurance Program at 1-800-638-6620.

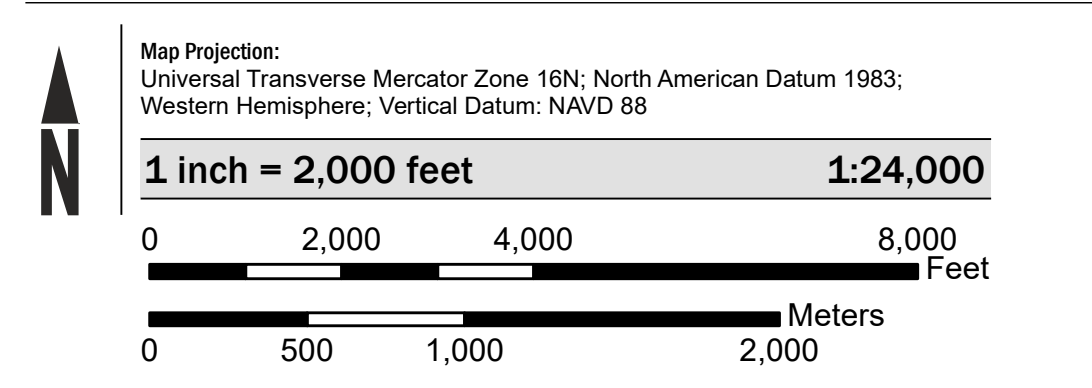
Base map information shown on this FIRM was derived from multiple sources, including the U.S. Bureau of the Census, U.S. Geological Survey and FEMA's Map Service Center. Aerials shown on the FIRM was provided by Lawrence County GIS Department. Data was collected in 2012 with a 1-foot cell size.



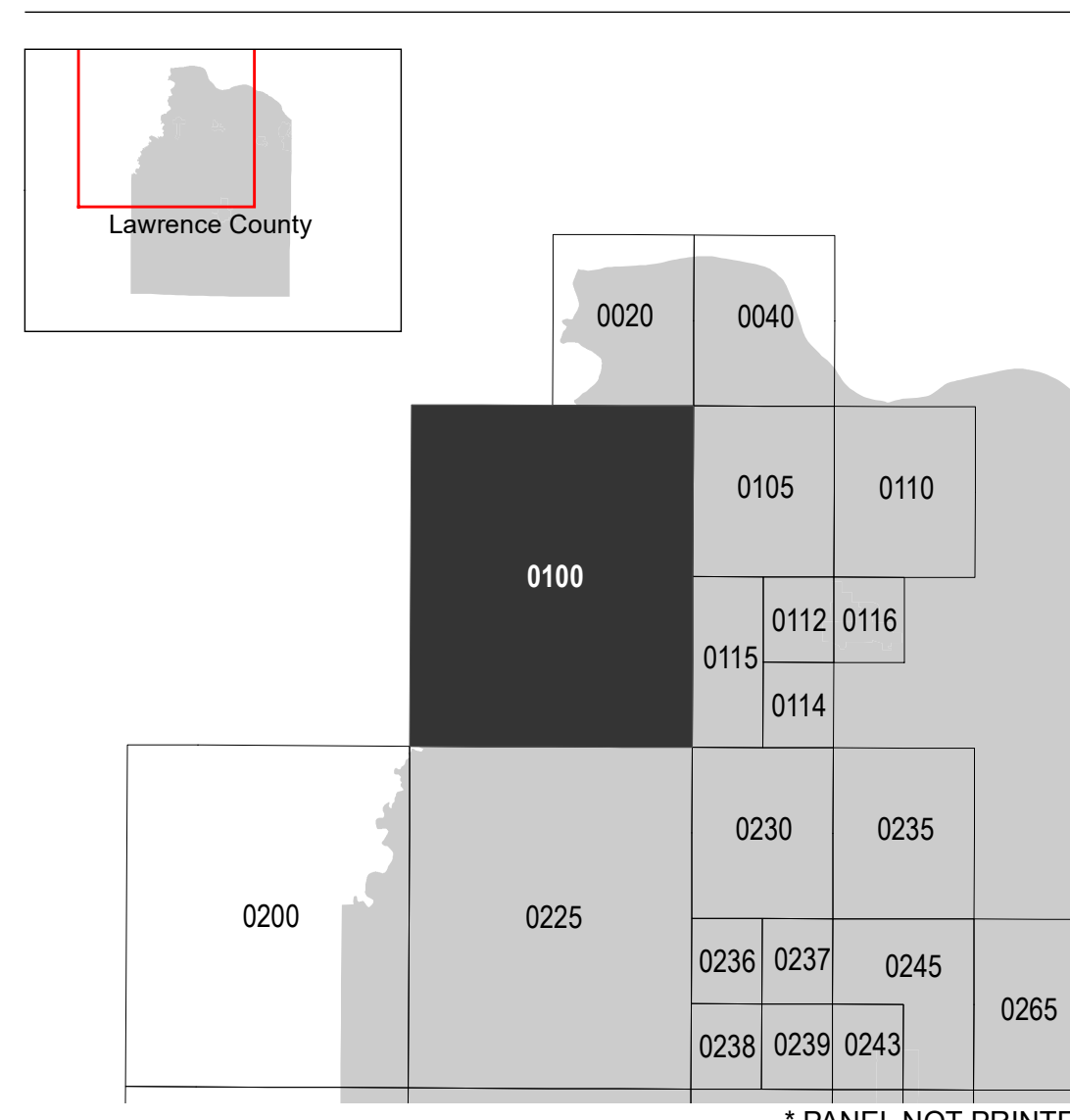
In cooperation with the Federal Emergency Management Agency (FEMA) and local communities in Alabama, this Flood Insurance Rate Map (FIRM) was developed by the Alabama Office of Water Resources in a digital statewide format to assist communities in their efforts to minimize the loss of property and life through effectively managing development in flood-prone areas. The State of Alabama has implemented a long term approach to floodplain management to reduce the impacts of flooding. This is demonstrated by the State's commitment to mapping floodplain areas at the local level. As part of this effort, the Alabama Office of Water Resources is working closely with FEMA as a Cooperating Technical Partner to produce and maintain this digital FIRM.

Please visit www.adeca.alabama.gov/floods for more information.

SCALE



PANEL LOCATOR



NATIONAL FLOOD INSURANCE PROGRAM
 FLOOD INSURANCE RATE MAP

LAWRENCE COUNTY,
 ALABAMA
 and Incorporated Areas
 PANEL 100 of 550



Panel Contains:

COMMUNITY	NUMBER	PANEL	SUFFIX
LAWRENCE COUNTY	010324	0100	D
TOWN CREEK, TOWN OF	010143	0100	D

PRELIMINARY
 2/04/2021

VERSION NUMBER
 2.6.4.5
 MAP NUMBER
 01079C0100D
 MAP REVISED

* PANEL NOT PRINTED