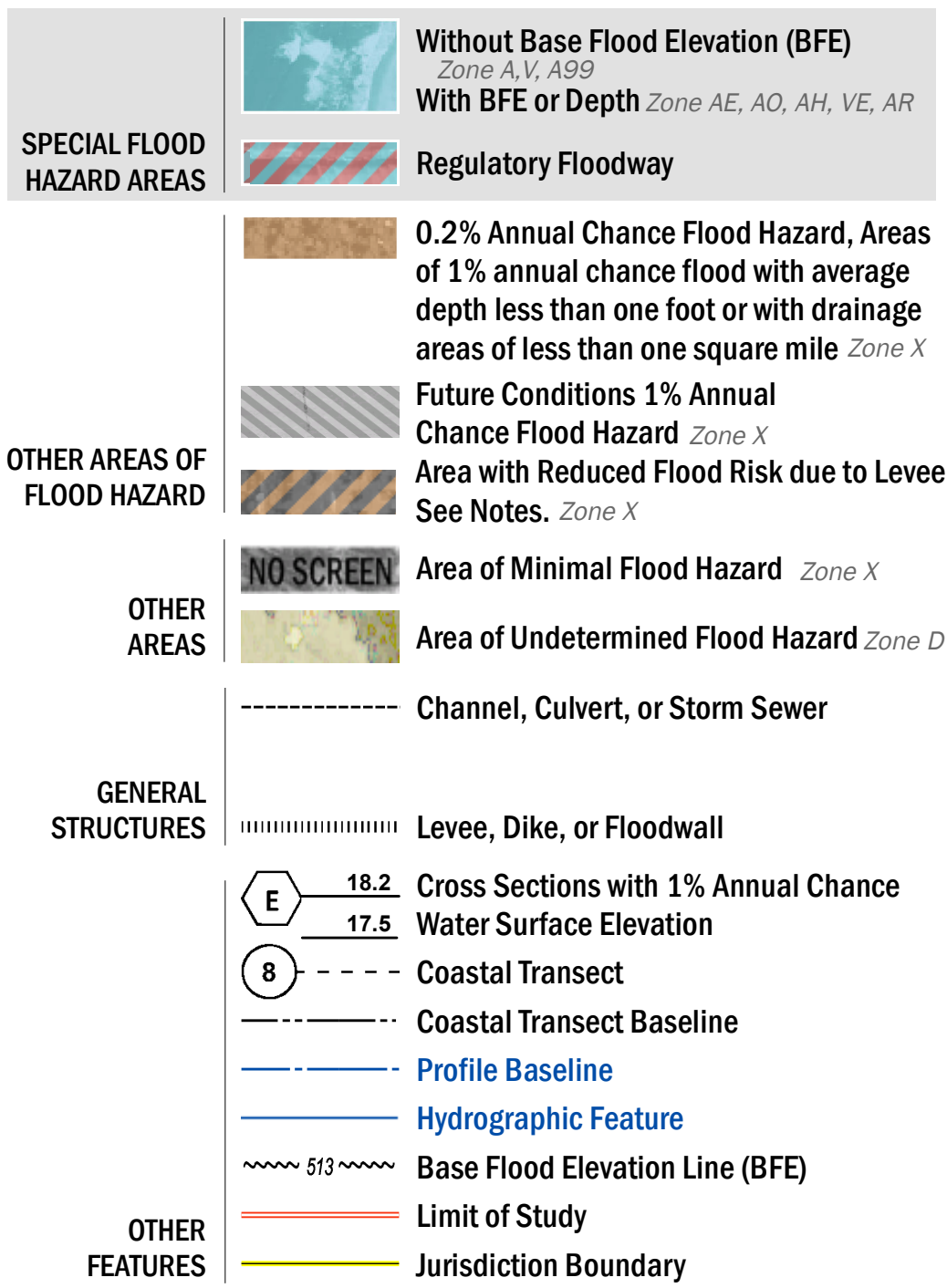


FLOOD HAZARD INFORMATION

SEE FIS REPORT FOR DETAILED LEGEND AND INDEX MAP FOR FIRM PANEL LAYOUT
THE INFORMATION DEPICTED ON THIS MAP AND SUPPORTING DOCUMENTATION ARE ALSO AVAILABLE IN DIGITAL FORMAT AT [HTTPS://MSC.FEMA.GOV](https://msc.fema.gov)



NOTES TO USERS

For information and questions about this Flood Insurance Rate Map (FIRM), available products associated with this FIRM, including historic versions, the current map date for each FIRM panel, how to order products, or the National Flood Insurance Program (NFIP) in general, please call the FEMA Map Information eXchange at 1-877-FEMA-MAP (1-877-336-2627) or visit the FEMA Flood Map Service Center website at <https://msc.fema.gov>. Available products may include previously issued Letters of Map Change, a Flood Insurance Study Report, and/or digital versions of this map. Many of these products can be ordered or obtained directly from the website.

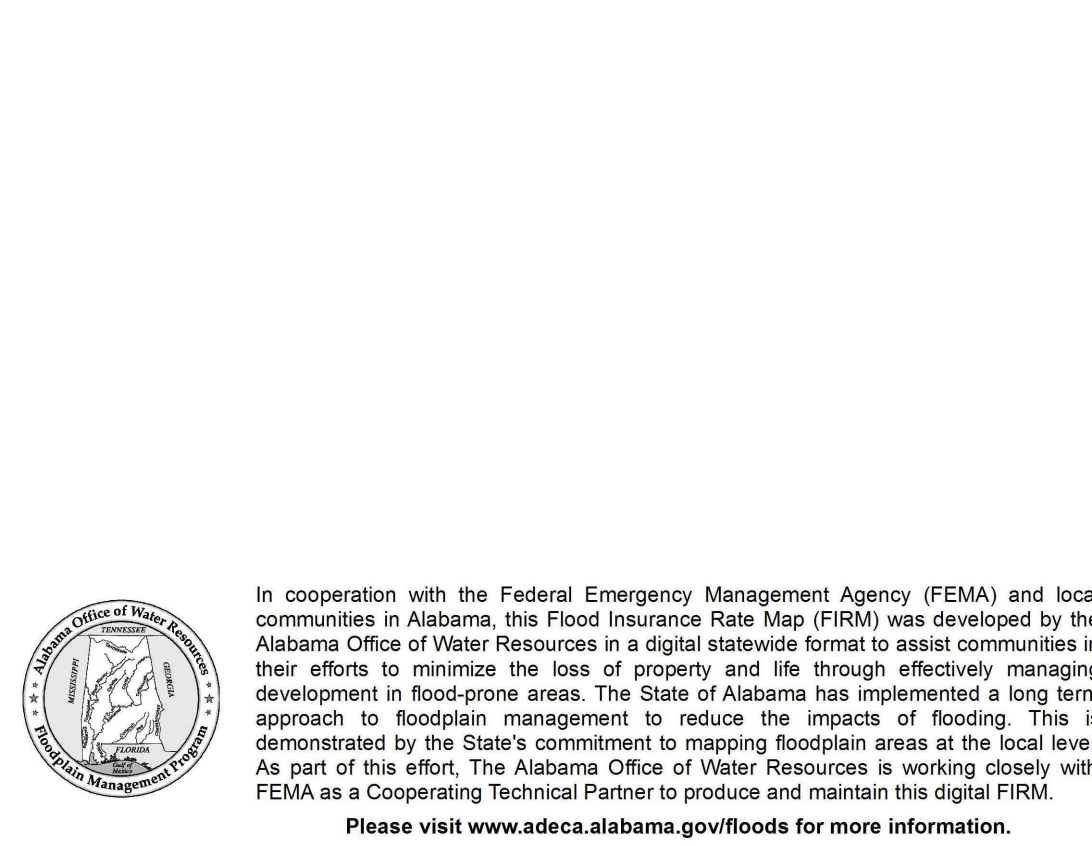
Communities annexing land on adjacent FIRM panels must obtain a current copy of the adjacent panel as well as the current FIRM Index. These may be ordered directly from the Flood Map Service Center at the number listed above.

For community and countywide map dates refer to the Flood Insurance Study Report for this jurisdiction. To determine if flood insurance is available in this community, contact your insurance agent or call the National Flood Insurance Program at 1-800-638-6620.

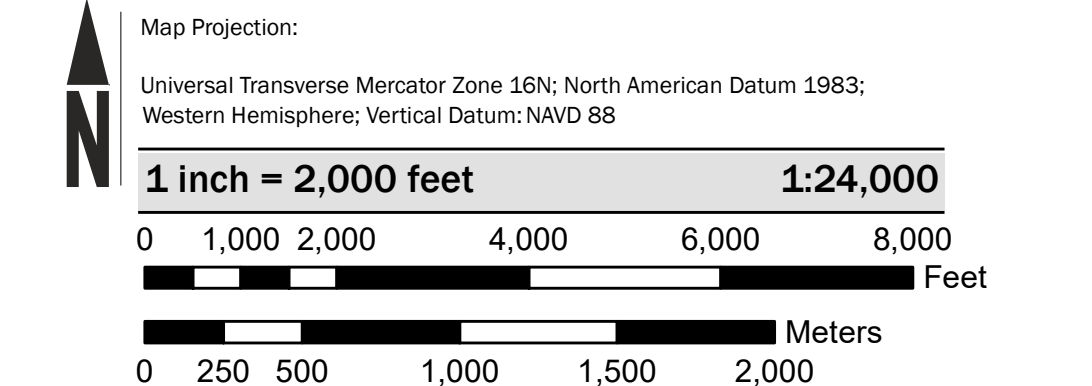
Base map information shown on this FIRM was provided in digital format by the Jackson County Revenue Commission. This information was photogrammetrically compiled at a scale of 1" = 100' from aerial photography dated 2016.

In cooperation with the Federal Emergency Management Agency (FEMA) and local communities in Alabama, this Flood Insurance Rate Map (FIRM) was developed by the Alabama Office of Water Resources in a digital statewide format to assist communities in their efforts to minimize the loss of property and life through effectively managing development in flood-prone areas. The State of Alabama has implemented a long term approach to floodplain management to reduce the impacts of flooding. This is demonstrated by the State's commitment to mapping floodplain areas at the local level. As part of this effort, the Alabama Office of Water Resources is working closely with FEMA as a Cooperating Technical Partner to produce and maintain this digital FIRM.

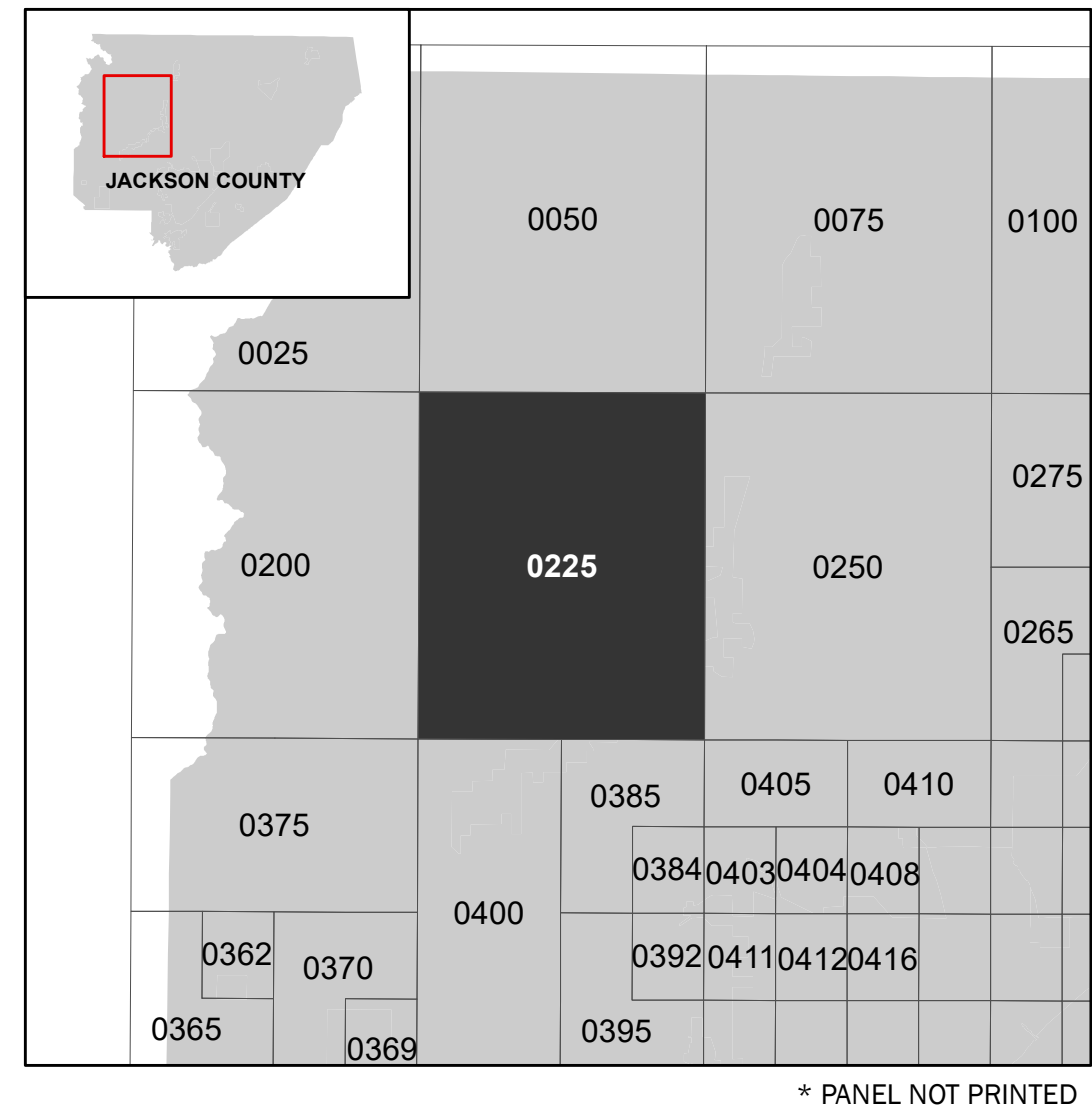
Please visit www.adeca.alabama.gov/floods for more information.



SCALE



PANEL LOCATOR



NATIONAL FLOOD INSURANCE PROGRAM
FLOOD INSURANCE RATE MAP

JACKSON COUNTY, ALABAMA
 and Incorporated Areas
 PANEL 225 of 675

Panel Contains:

COMMUNITY	NUMBER	PANEL	SUFFIX
JACKSON COUNTY	010110	0225	E
PLEASANT GROVES, TOWN OF	010496	0225	E
SKYLINE, TOWN OF	010497	0225	E

PRELIMINARY
9/7/2020

VERSION NUMBER
2.4.3.5

MAP NUMBER
01071C0225E

MAP REVISED